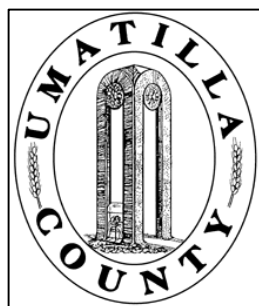


This map was prepared for Assessment & Taxation purposes only and was NOT prepared for nor is it suitable for legal, engineering or surveying purposes.

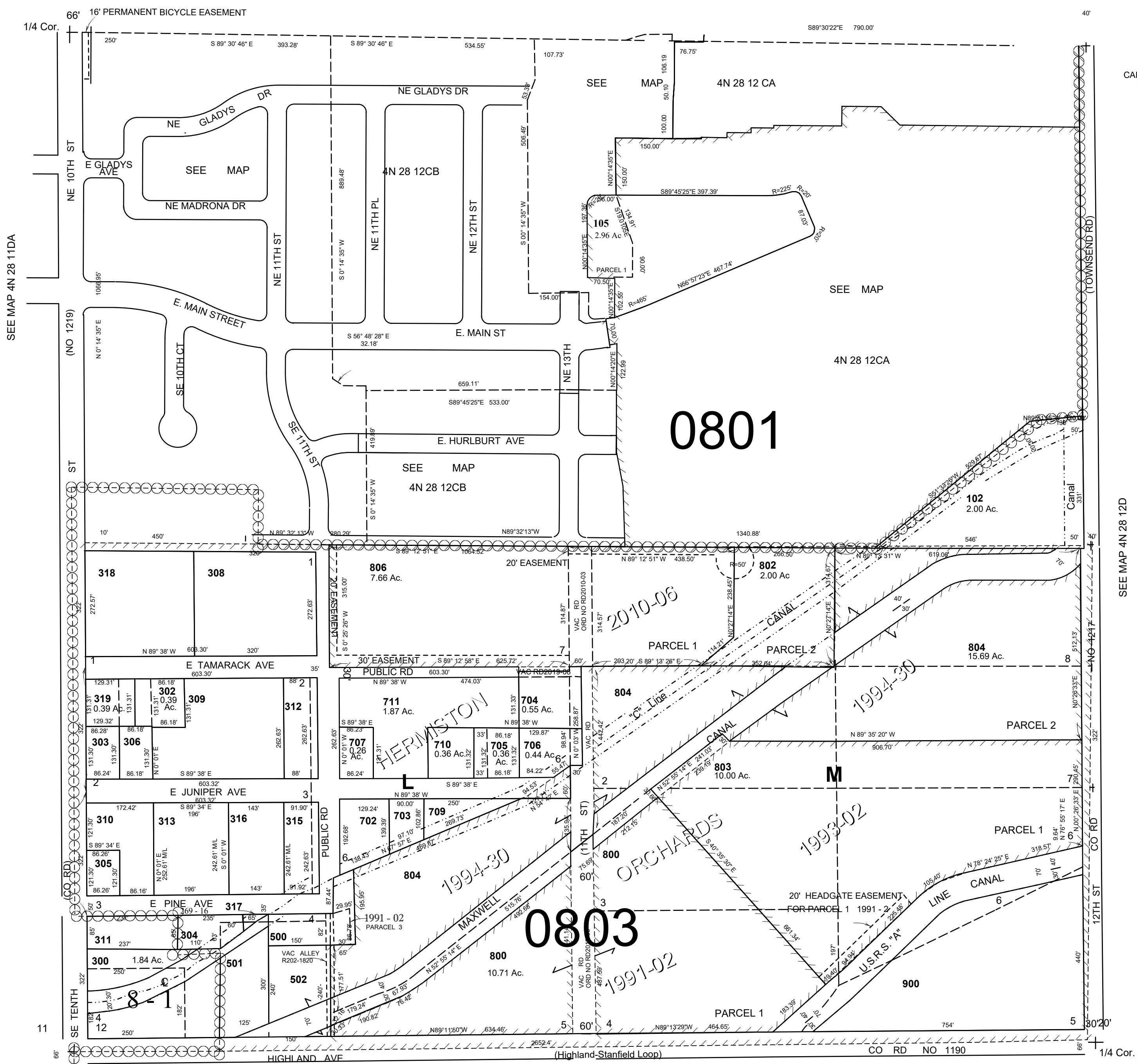


SW 1/4 SEC 12 T4N R28E WM
UMATILLA COUNTY

SCALE: 1" = 200'

4N 28 12C
AERIAL PHOTO NO 1P-123

SEE MAP 4N 28 12B



- CANCELLED
- TL 101
- 600
- 708
- 307
- 314
- 801
- 503
- 805
- 103
- 104
- 200
- 400
- 100
- 301
- 700
- 701

SEE MAP 4N 28 12D

SEE MAP 4N 28 11DA

14

13

SEE MAP 4N 28 13BB

SEE MAP 4N 28 13

Revised 07-17-19

4N 28 12C