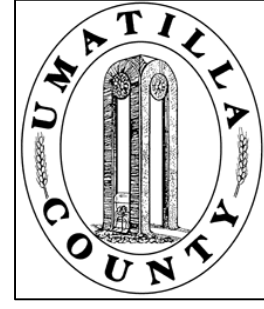


This map was prepared for Assessment & Taxation purposes only and was NOT prepared nor is it suitable for legal, engineering, or surveying purposes.



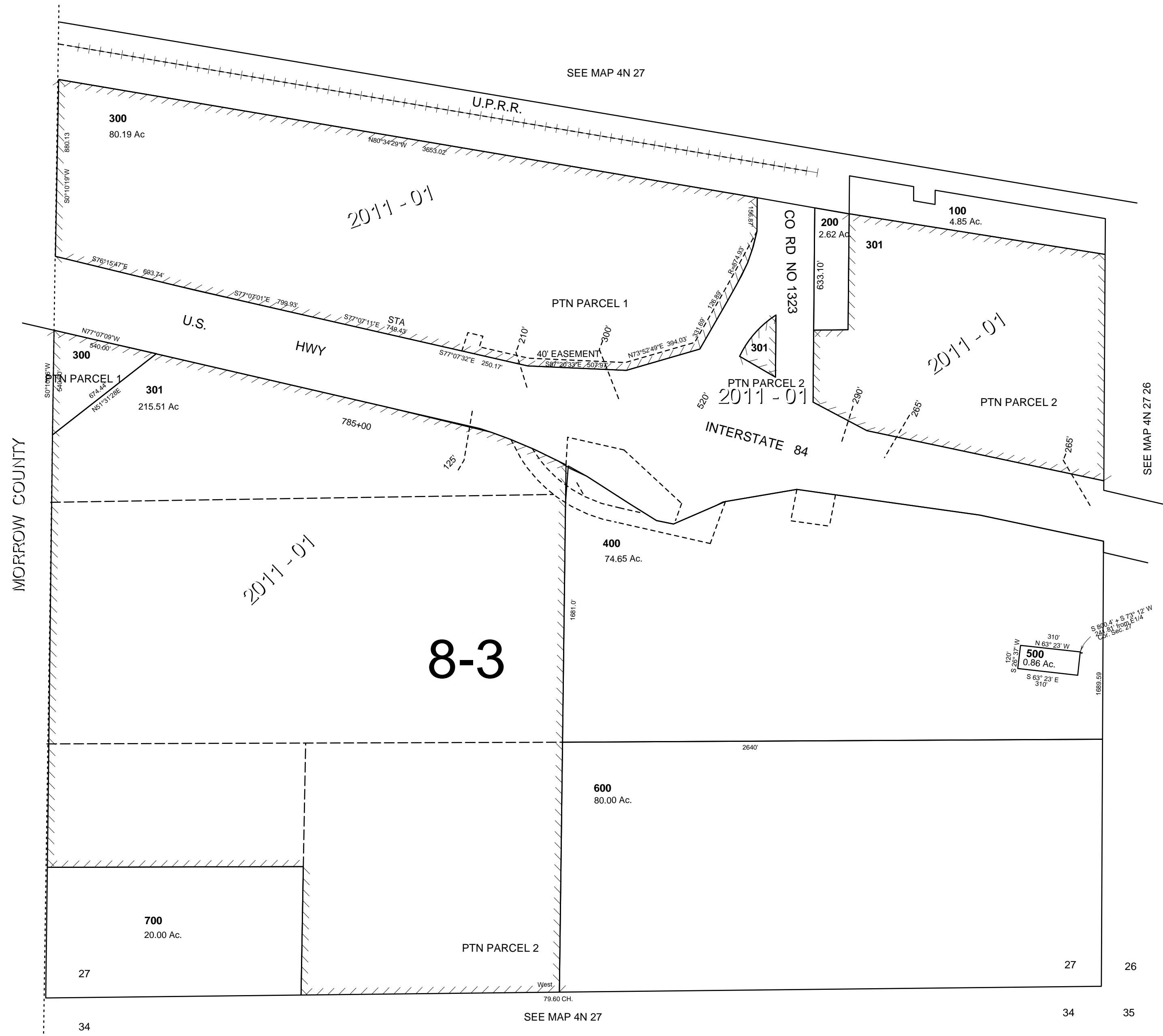
# SEC 27 T4N R27E WM UMATILLA COUNTY

SCALE: 1" = 400'

4N 27 27

AERIAL PHOTO NO. NZ-1P 116-118

2P 27-29 & 36-38



Revised: 9/13/11

4N 27 27