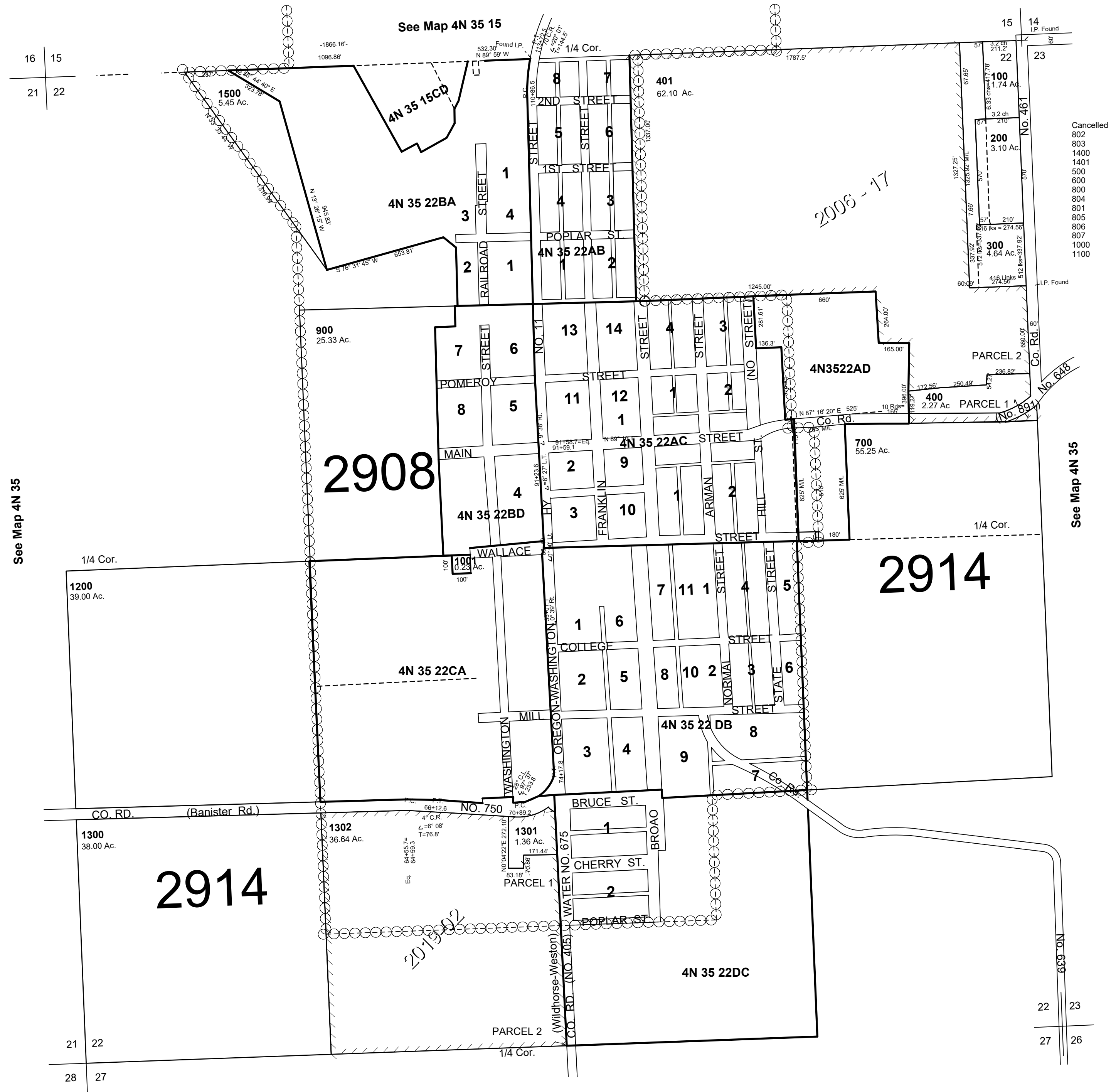


This map was prepared for Assessment & Taxation purposes only and was NOT prepared nor is it suitable for legal, engineering or surveying purposes.

SEC 22 T4N R35E WM  
UMATILLA COUNTY  
SCALE 1"=400'

4N 35 22

AERIAL PHOTO NO 5P-97



Revised:02-07-19

4N 35 22