

This map was prepared for Assessment & Taxation purposes only and was NOT prepared nor is it suitable for legal, engineering or surveying purposes.

Cancelled Tax Lots

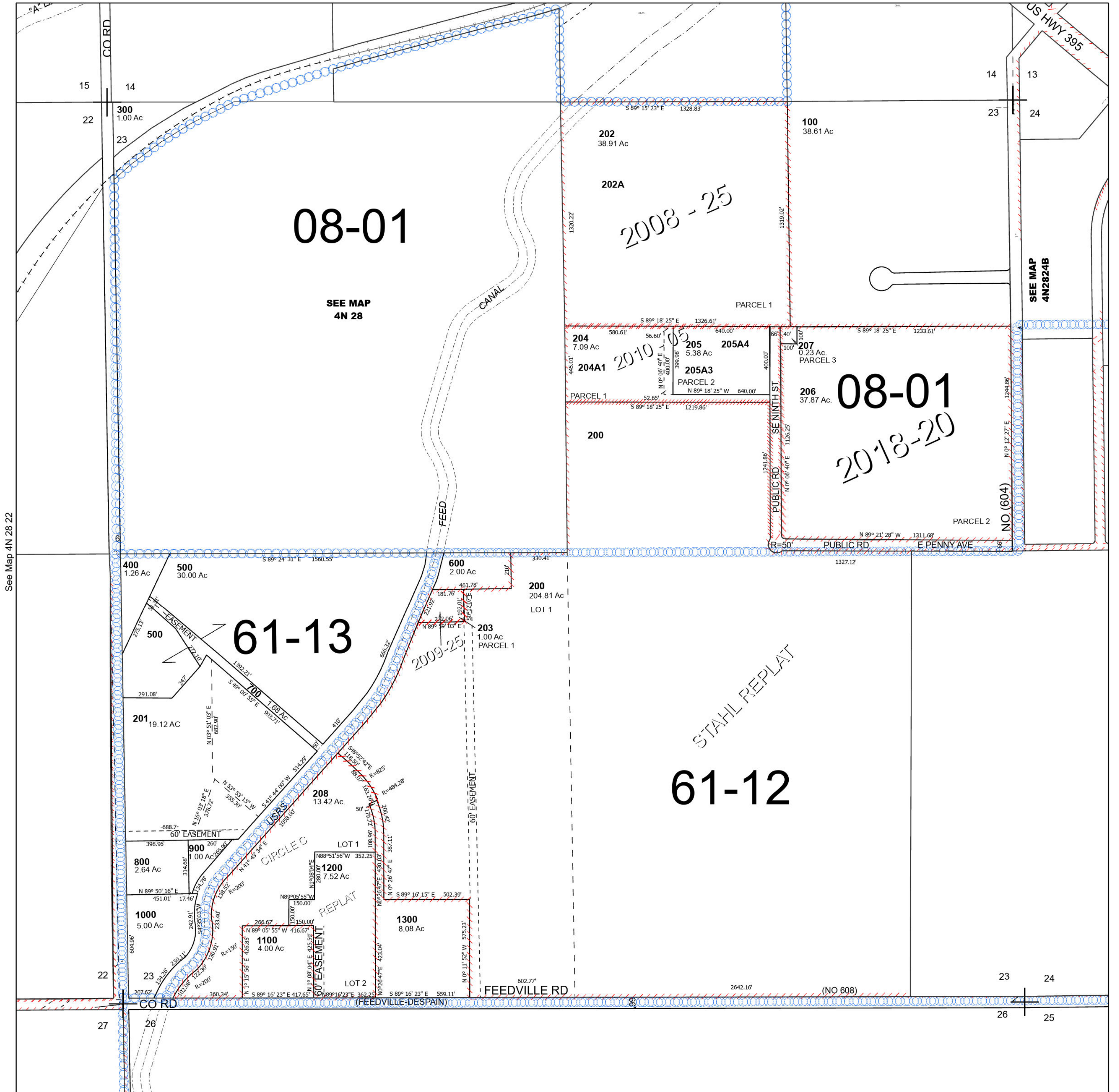
# SEC 23 T4N R28E WM UMATILLA COUNTY

## 4N 28 23

Hermiston

SCALE 1" = 400'

See Map 4N 28 14D



See Map 4N 28 22

See Map 4N 28 24B

Revised 5/24/2023

See Map 4N 28

## 4N 28 23