

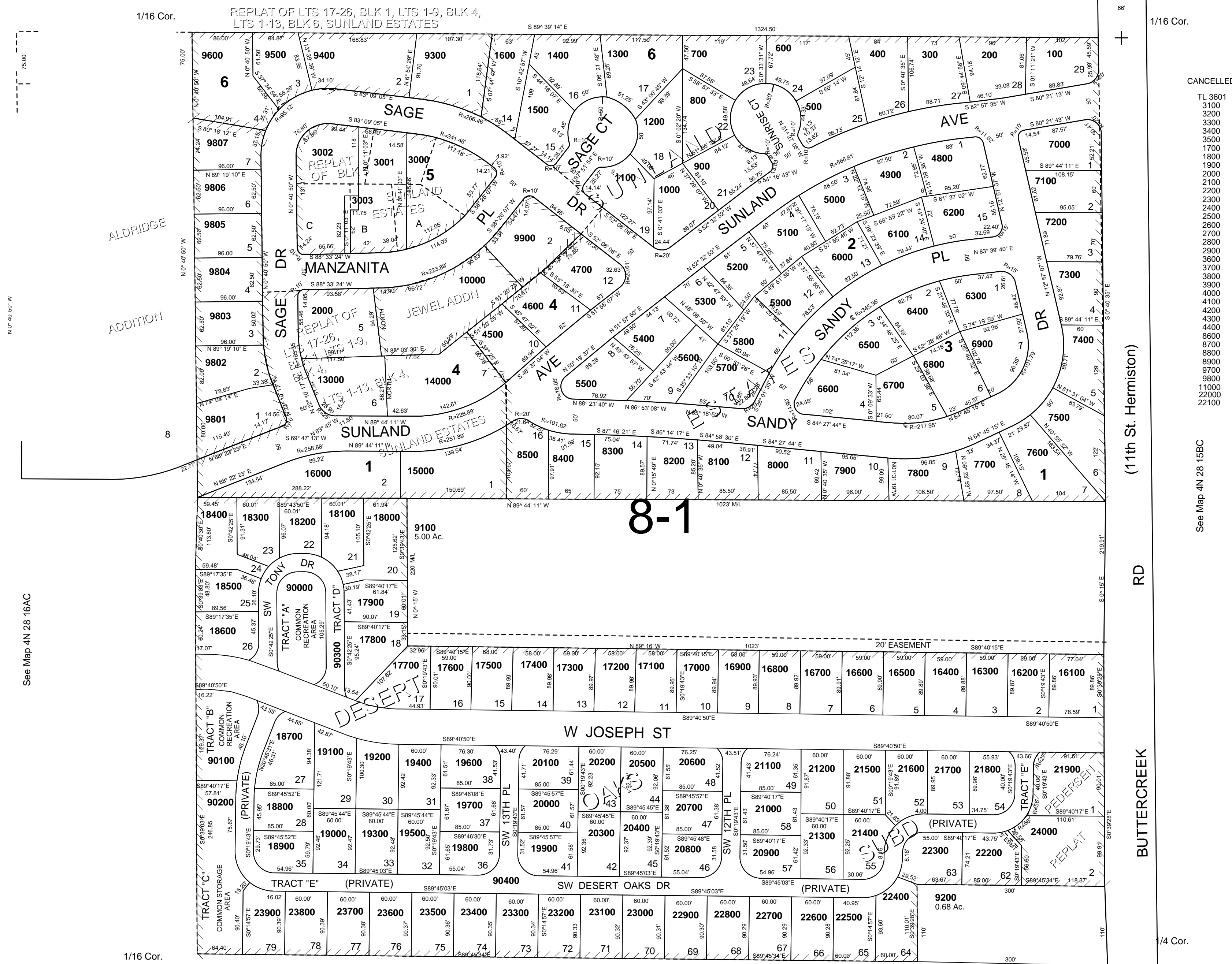
This map was prepared for Assessment & Taxation purposes only and was NOT prepared, nor is it suitable for legal, engineering or surveying purposes.

SE1/4 NE1/4 SEC 16 T4NR28E WM UMATILLA COUNTY SCALE 1"=100'

4N2816AD

AERIAL PHOTO NO NZ 2P-25

See Map 4N 28 16AA



CANCELLED

- TL 3601
- 3100
- 3200
- 3300
- 3400
- 3500
- 1700
- 1800
- 1900
- 2000
- 2100
- 2200
- 2300
- 2400
- 2500
- 2600
- 2700
- 2800
- 2900
- 3600
- 3700
- 3800
- 3900
- 4000
- 4100
- 4200
- 4300
- 4400
- 8600
- 8700
- 8800
- 8900
- 9700
- 9800
- 11000
- 22000
- 22100

See Map 4N 28 15BC

(11th St. Hermiston)

RD

BUTTERCREEK

1/4 Cor.

REVISED: 3/16/11

4N2816AD

See Map 4N 28 16D

See Map 4N 28 16AC

1/16 Cor.