

This map was prepared for Assessment & Taxation purposes only and has not been prepared or is it suitable for legal, engineering or surveying purposes.

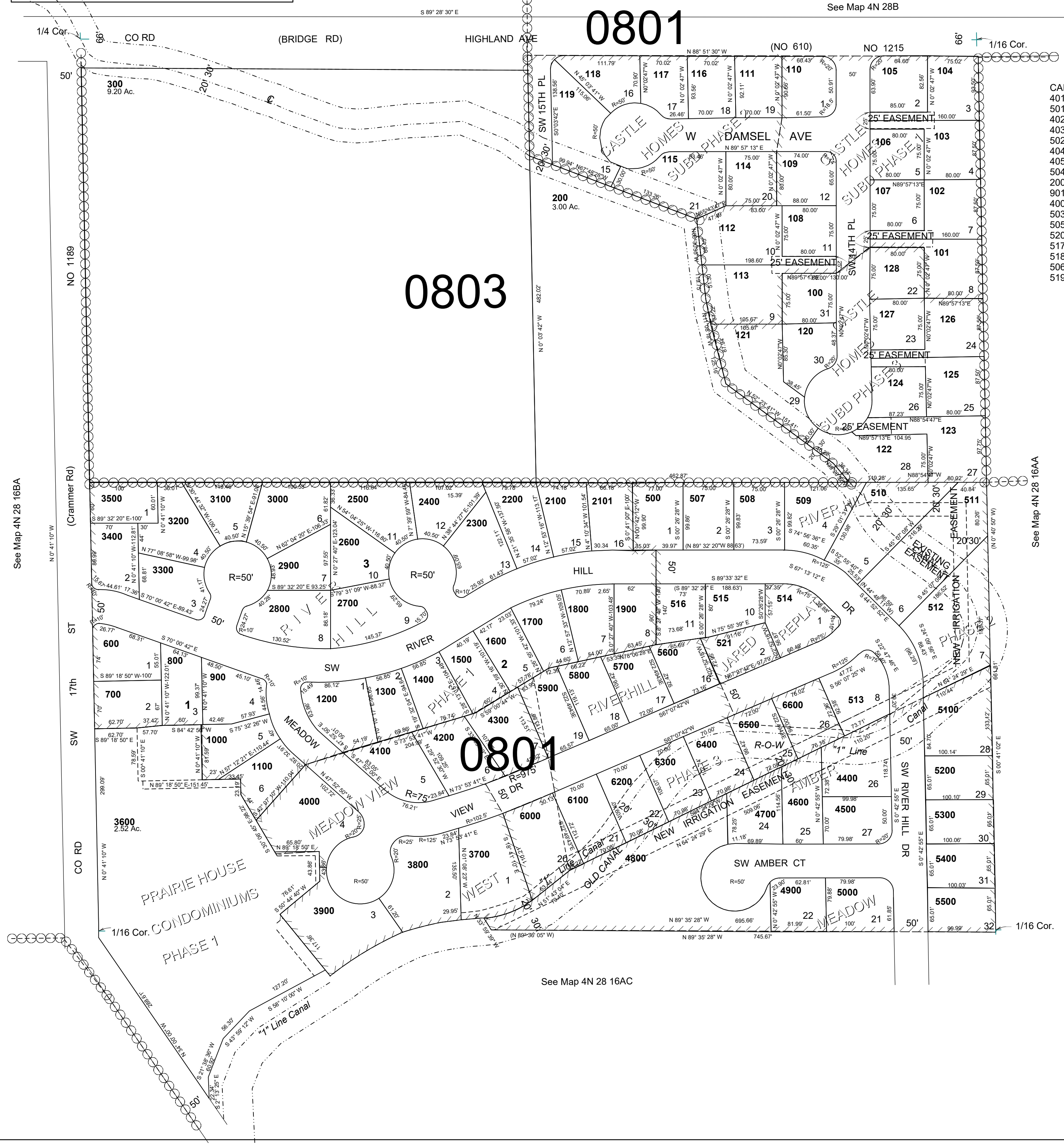
NW1/4 NE1/4 T4N R28E WM UMATILLA COUNTY

4N2816AB

SCALE 1"=100'

See Map 4N 28B

AERIAL PHOTO NO
NZ-2P-25



- CANCELLED NO
- 401
 - 501
 - 402
 - 403
 - 502
 - 404
 - 405
 - 504
 - 2000
 - 90101 THRU 90212 I
 - 400
 - 503
 - 505
 - 520
 - 517
 - 518
 - 506
 - 519

See Map 4N 28 16BA

See Map 4N 28 16AA

See Map 4N 28 16AC

REVISED: 01-18-19

4N2816AB