

This map was prepared for Assessment & Taxation purposes only and was NOT prepared nor is it suitable for legal, engineering or surveying purposes.

SW 1/4 NW 1/4 SEC 11 T4N R28E WM

UMATILLA COUNTY

SCALE 1" = 100'

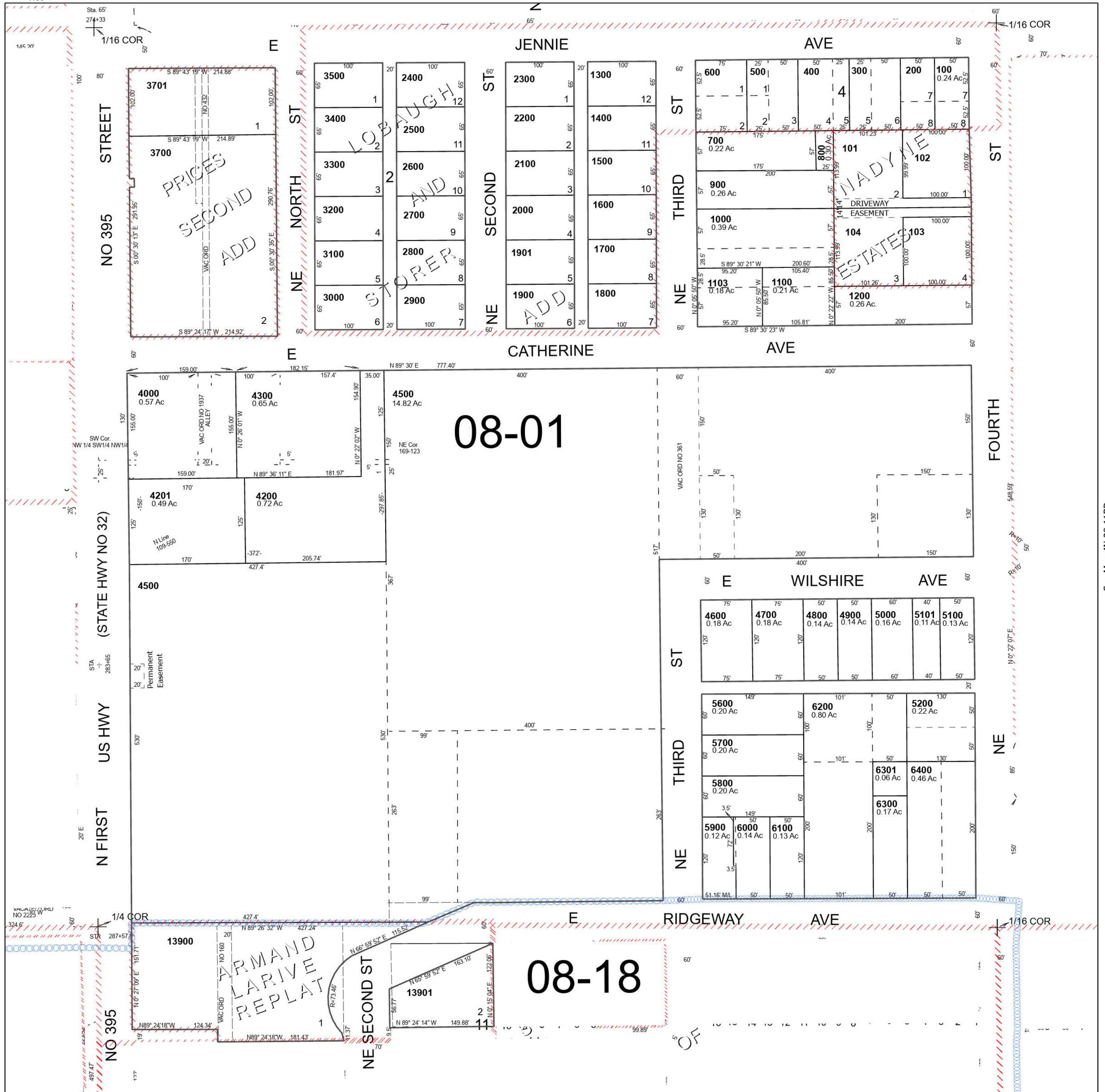
Hermiston

Cancelled Tax Lots

1101	4400
1102	4690
3600	5201
3780	5300
3790	5400
3800	5500
3801	5901
3900	
3901	
4100	

See Map 4N 28 11BB

4N 28 11BC



See Map 4N 28 10AD

See Map 4N 28 11BD