

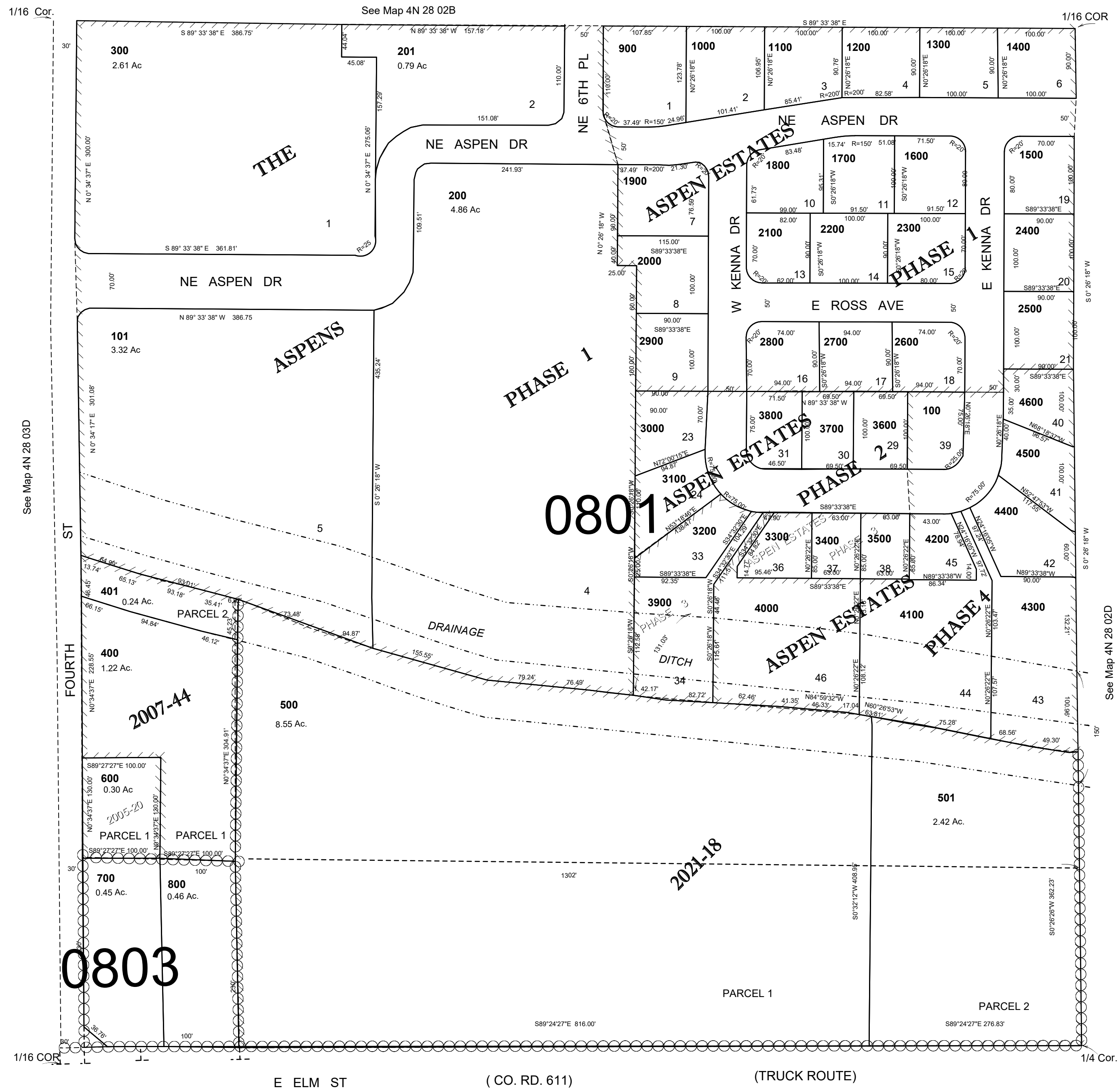
This map was prepared for Assessment & Taxation purposes only and was NOT prepared nor is it suitable for legal, engineering or surveying purposes.

SE1/4 SW1/4 SEC 2 T4N R28E WM UMATILLA COUNTY

4N 28 02CD

AERIAL PHOTO NO. NZ 1P-122

SCALE 1"=100'



See Map 4N 28 11BA

Revised: 07-07-2021

4N 28 02CD