

This map was prepared for Assessment & Taxation purposes only and was NOT prepared nor is it suitable for legal, engineering or surveying purposes.

# SW 1/4 NE 1/4 SEC 04 T3N R34E WM

## UMATILLA COUNTY

SCALE 1" = 100'

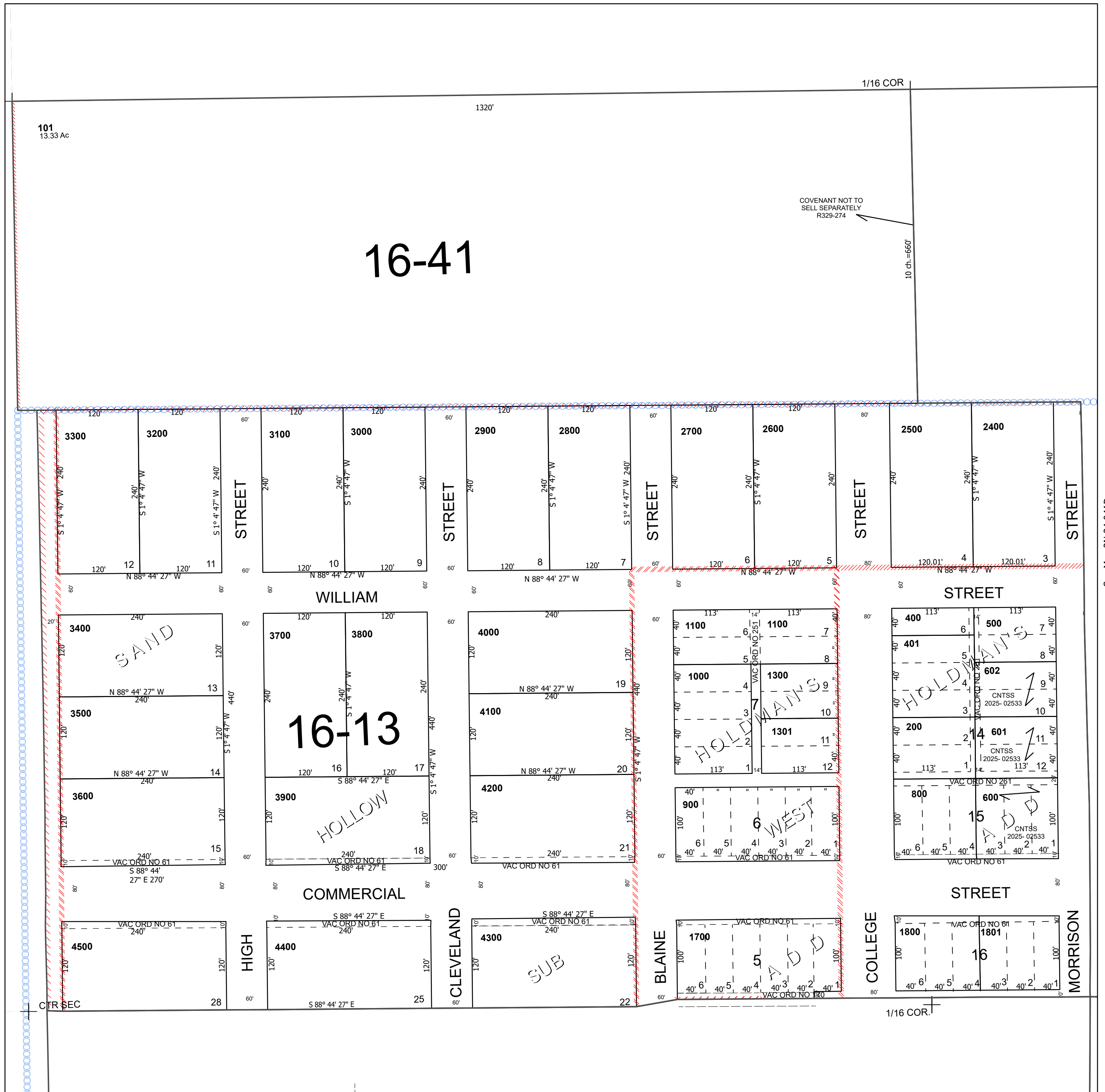
Adams

### 3N 34 04AC

Cancelled Tax Lots

- 100 2100
- 190 2200
- 300 2300
- 700
- 1200
- 1400
- 1500
- 1600
- 1900
- 2000

See Map 3N 34



See Map 3N 34 04B

See Map 3N 34 04D