

This map was prepared for Assessment & Taxation purposes only and was NOT prepared nor is it suitable for legal, engineering or surveying purposes.

# NE 1/4 SE 1/4 SEC 16 T3N R29E WM

## UMATILLA COUNTY

SCALE 1" = 100'

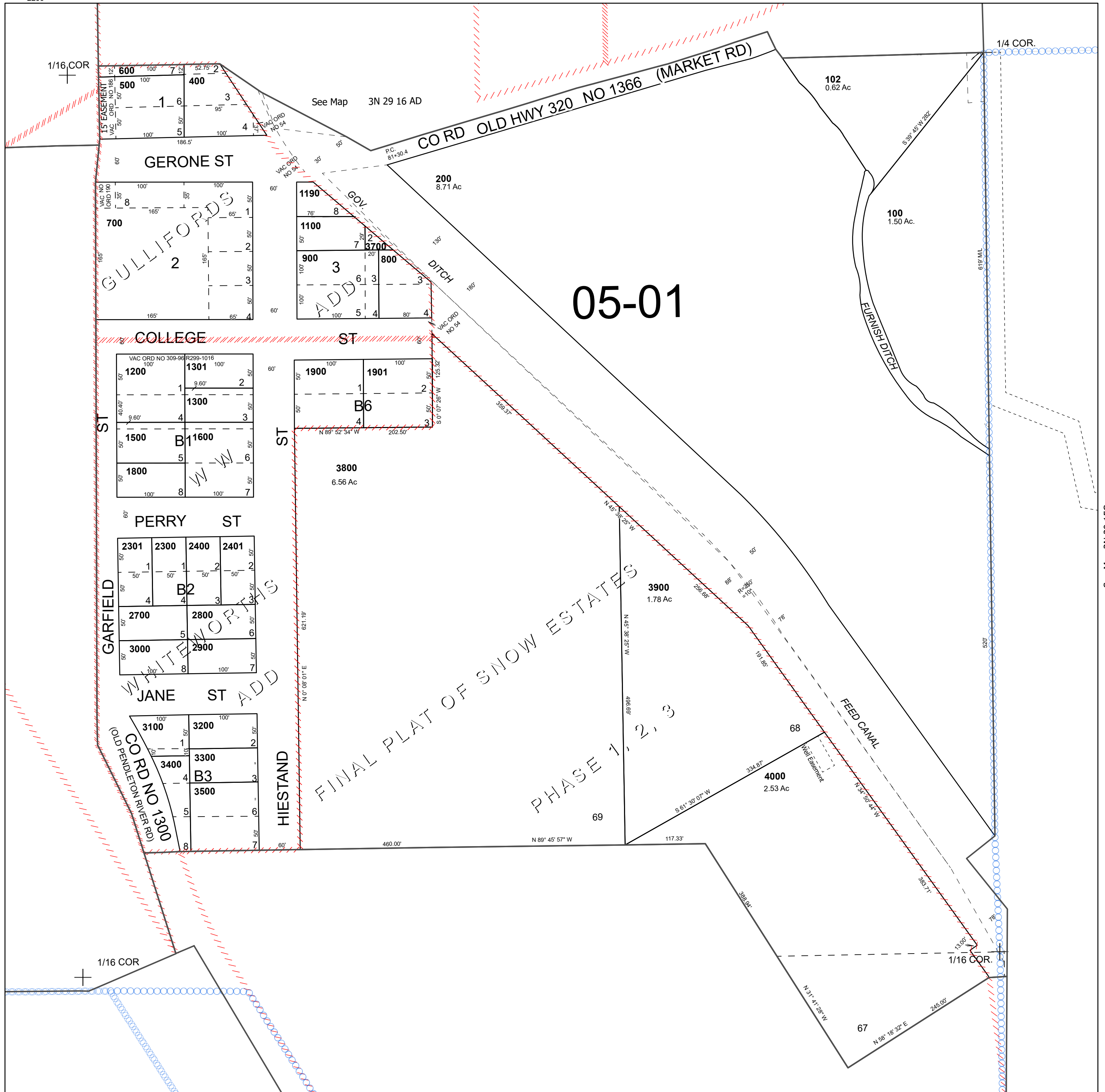
Echo

### 3N 29 16DA

Cancelled Tax Lots

|      |      |
|------|------|
| 101  | 2500 |
| 300  | 2600 |
| 801  | 3600 |
| 1000 |      |
| 1090 |      |
| 1400 |      |
| 1700 |      |
| 2000 |      |
| 2100 |      |
| 2200 |      |

See Map 3N 29 16AD



See Map 3N 29 16DB

See Map 3N 29 15C

Revised 8/1/2024

See Map 3N 29 16DD

### 3N 29 16DA