

This map was prepared for Assessment & Taxation purposes only and was NOT prepared nor is it suitable for legal, engineering or surveying purposes.

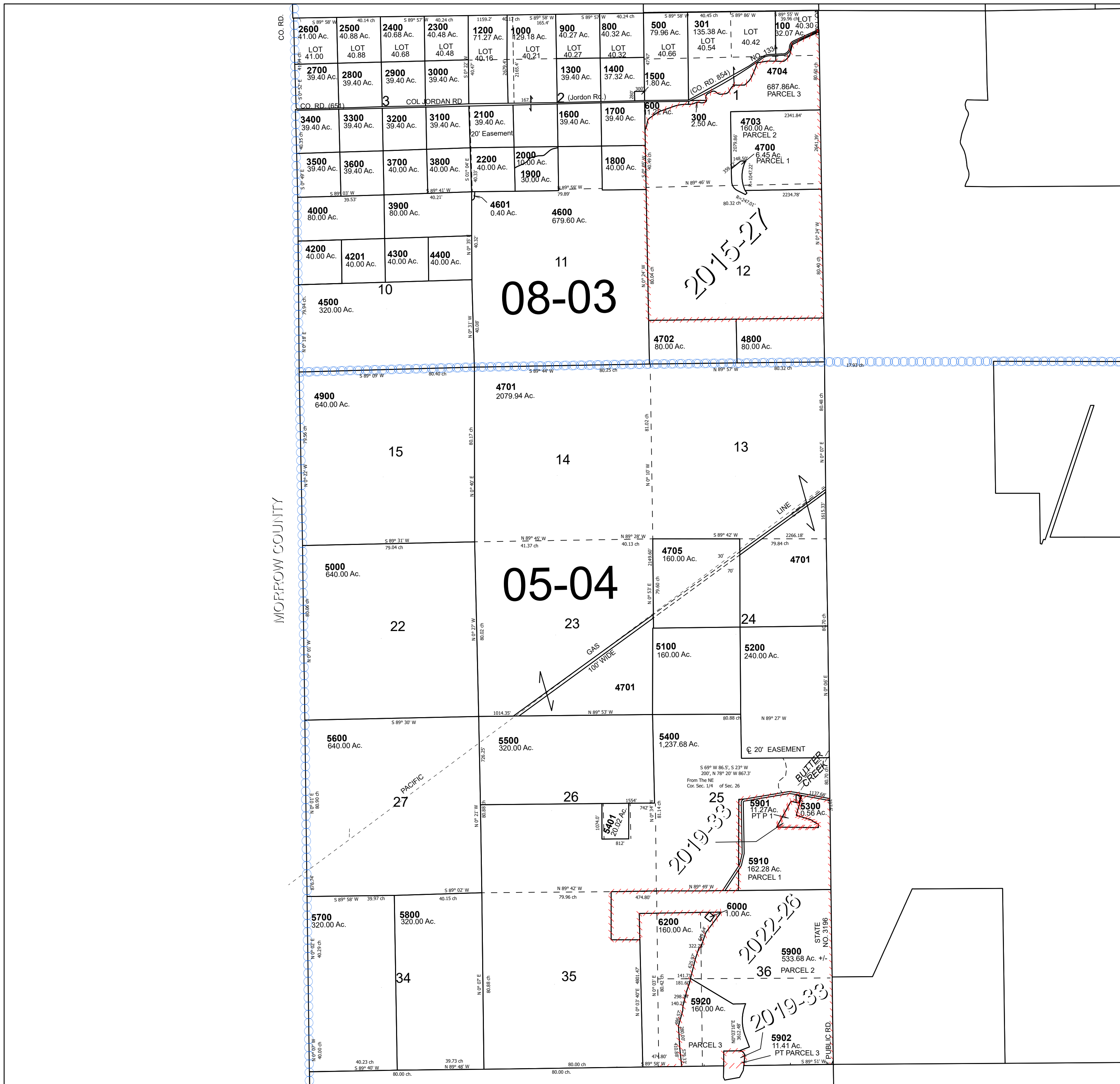
# T3N R27E WM UMATILLA COUNTY

# 3N 27

Cancelled Tax Lots  
200  
400  
700  
1100  
4100  
6100

SCALE 1" = 2,000'

See Map 4N 27



See Map

MORROW COUNTY

See Map 3N 28