

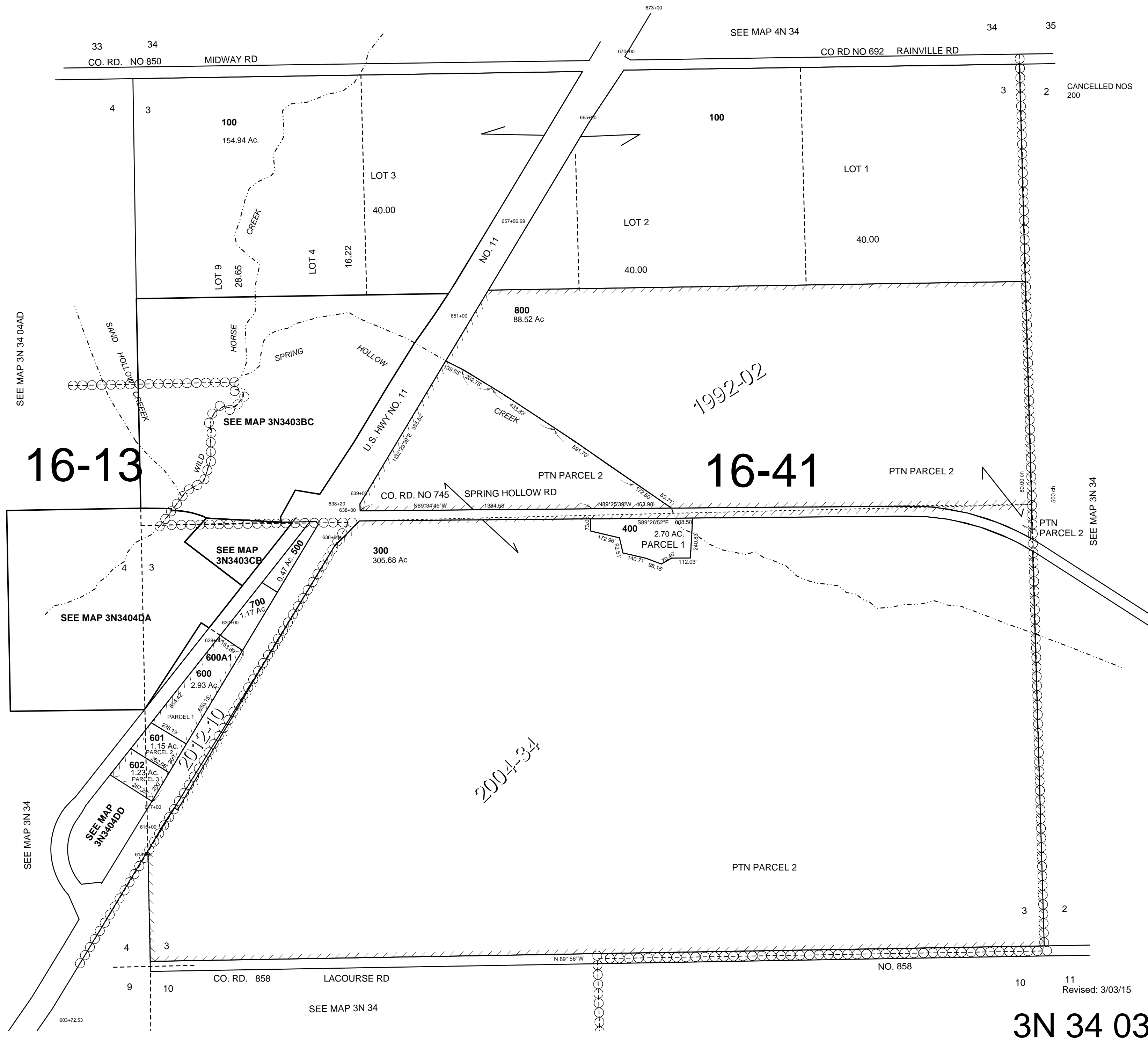
This map was prepared for Assessment & Taxation purposes only and was NOT prepared nor is it suitable for legal, engineering or surveying purposes.

SEC 3 T3N R34E WM UMATILLA COUNTY

SCALE 1"=400'

3N 34 03

AERIAL PHOTO NO 5P 167-171
4P 153-158 & 122-127



3N 34 03