

This map was prepared for Assessment & Taxation purposes only and was NOT prepared nor is it suitable for legal, engineering or surveying purposes.

T3N R29E WM UMATILLA COUNTY

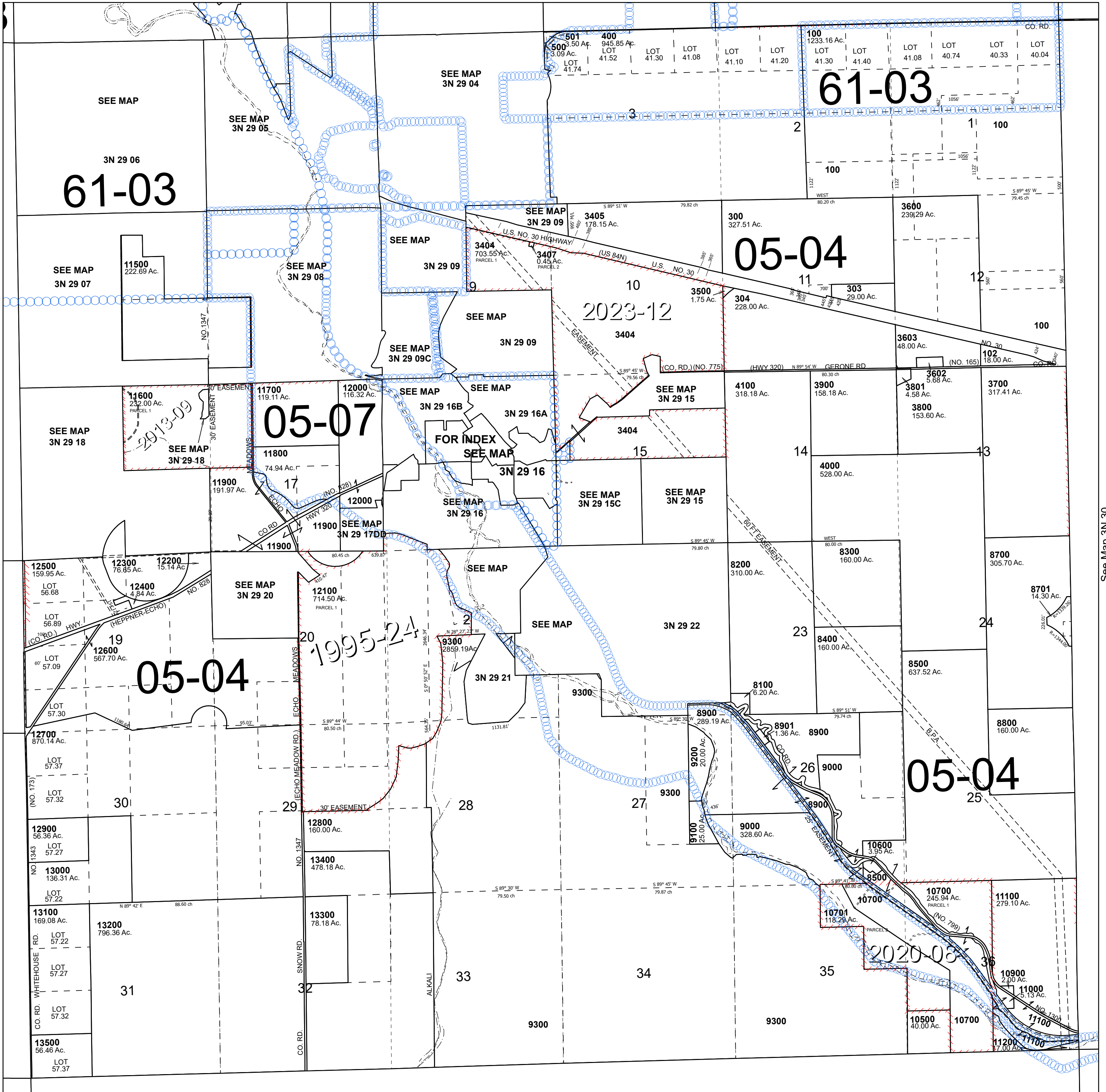
3N 29

SCALE 1" = 2,000'

Cancelled Tax Lots

101	800	1700	2400	3001	4101	5000	5700	6400	7101	7801	9800
103	900	1702	2500	3100	4200	5100	5800	6500	7200-7202	7900	9801
105	901	1800	2590	3200-3202	4300	5200	5801	6600	7300	8000	9900
200	1000	1804	2600-2603	3300-3302	4400	5300	5900-5904	6601	7400	8600	10000
202	1100	1900	2700	3400	4500	5301	6000-6002	6700	7500	9001	10100
301	1200	2000	2800	3402	4600	5400	6100-6106	6701	7600	9400	10200
302	1300	2001	2801	3403	4601	5500	6200-6204	6800-6803	7601	9401	10300
305	1400	2100	2900	3406	4700	5501	6300	6900-6901	7700	9500	10400
600	1500	2200	2901	3601	4800	5600	6302	7000	7701	9600	11400
700	1600	2300	2990	3701	4900-4902	5601	6303	7100	7800	9700	

See Map 4N 29 34



See Map 3N 28

See Map 3N 30

3N 29