

This map was prepared  
for assessment purposes

T2S R301/2E WM  
UMATILLA COUNTY  
SCALE 1"=2000'

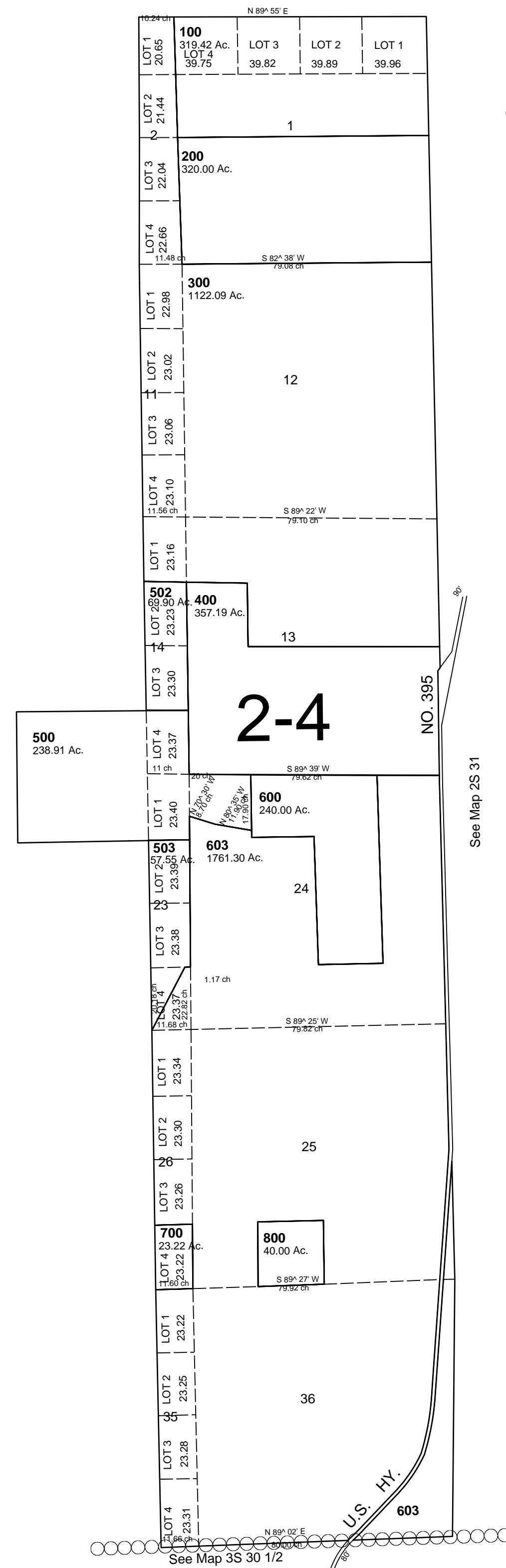
5/11/06

See Map 1S 30 1/2

2S 301/2

AERIAL PHOTO NO. NZ 7P-140,  
8P 31-32 & 53-54

CANCELLED  
TL 401  
601  
602  
501  
504



See Map 2S 31

2S 301/2