

This map was prepared for Assessment & Taxation purposes only and was NOT prepared nor is it suitable for legal, engineering or surveying purposes.

# SE 1/4 SEC 29 T2N R33E WM UMATILLA COUNTY

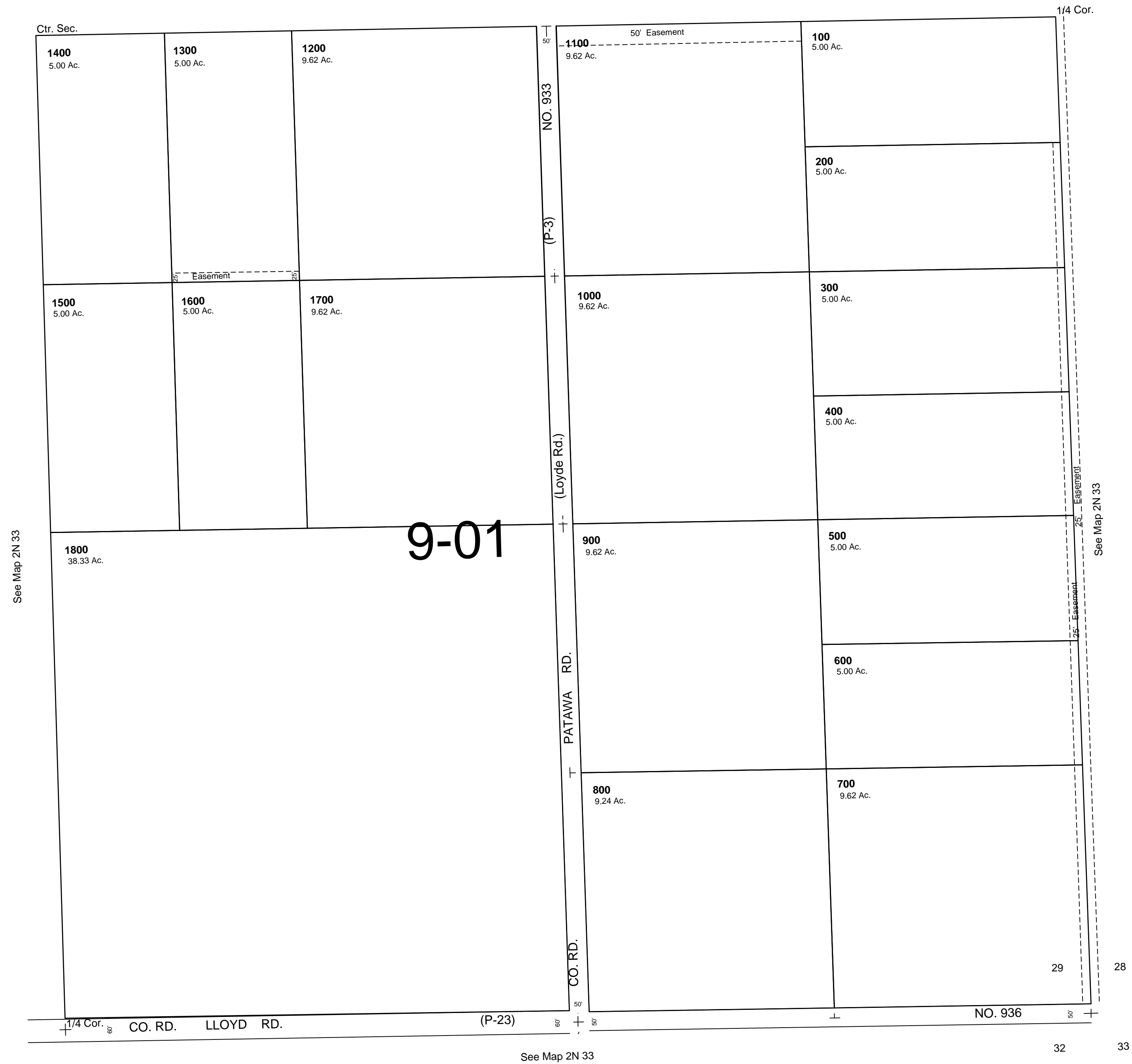
2/12/07

## 2N 33 29D

AERIAL PHOTO NO. NZ 4P-46

SCALE 1"=200'

See Map 2N 33



Revised: 10-22-09

## 2N 33 29D