

This map was prepared for Assessment & Taxation purposes only and has not been prepared for legal, engineering or surveying purposes.

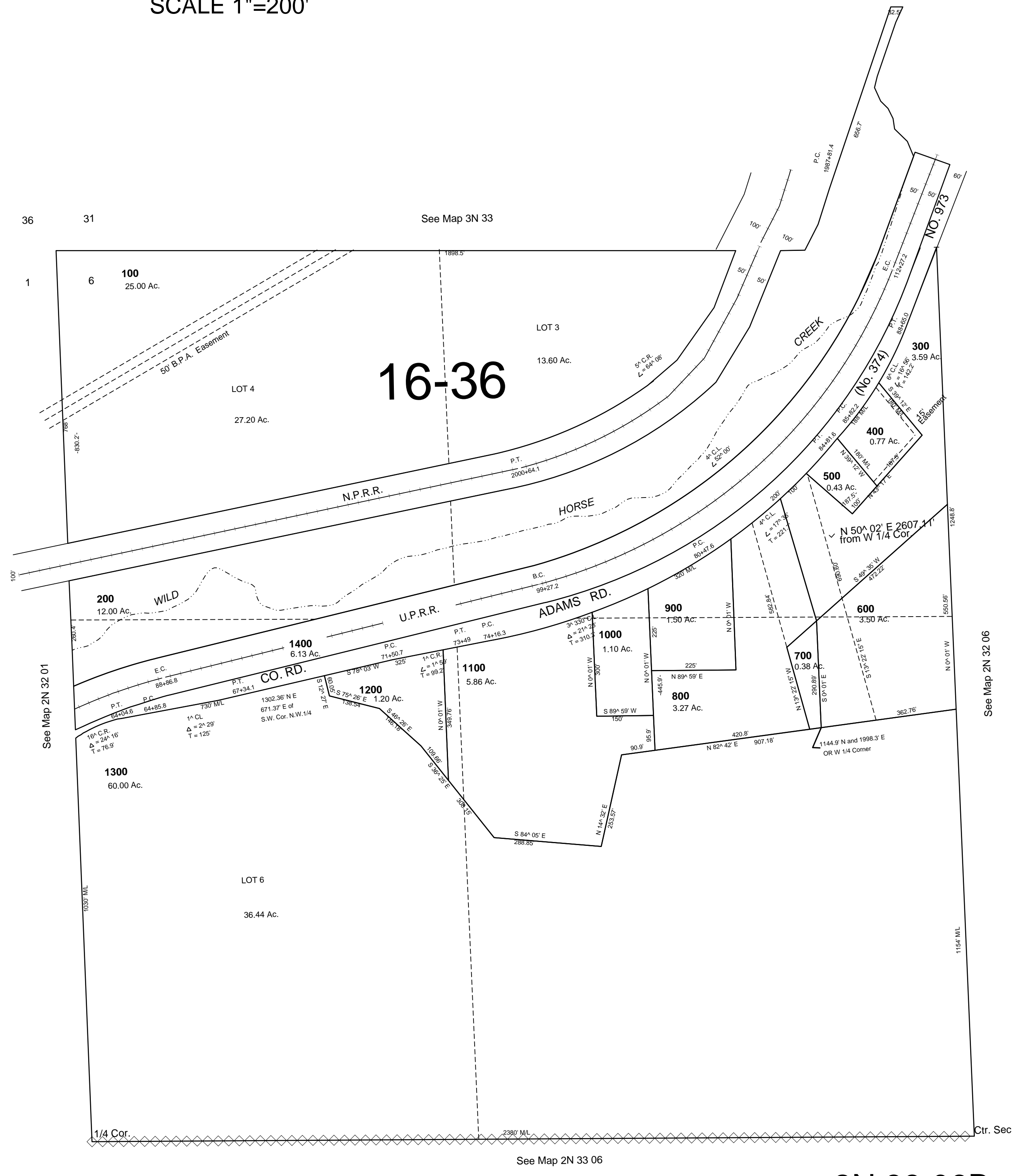
# NW1/4 SEC 6 T2N R33E WM UMATILLA COUNTY

4/03/08

## 2N 33 06B

AERIAL PHOTO NO 4P-101

SCALE 1"=200'



## 2N 33 06B