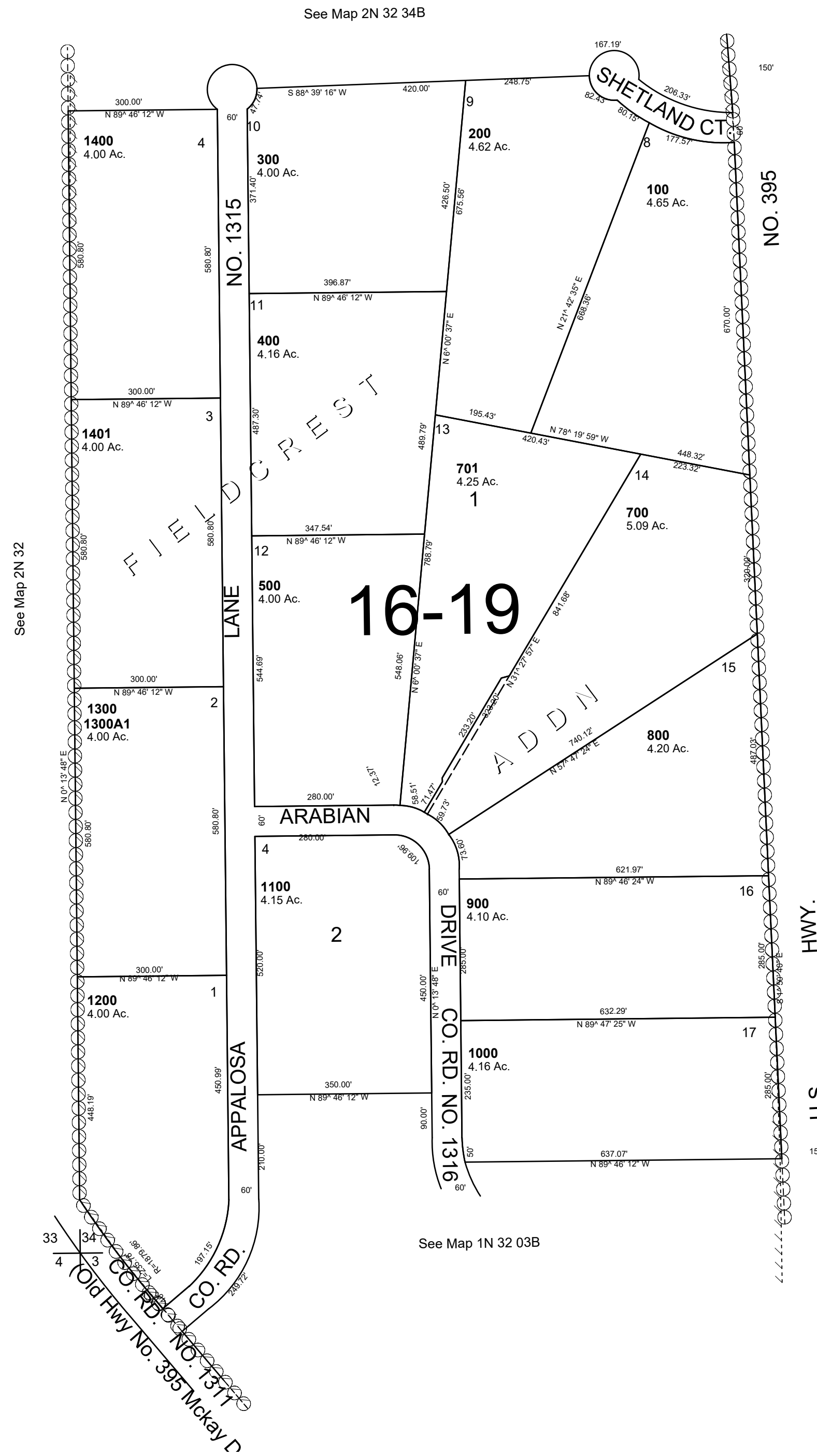


This map was prepared for Assessment & Taxation purposes only and was NOT prepared nor is it suitable for legal, engineering or surveying purposes.

SW 1/4 SEC 34 T2N R32E WM  
UMATILLA COUNTY  
1"=200'

2N 32 34C  
AERIAL PHOTO NO. 4P 49 & 50



CANCELLED  
TL 600  
1500

3/20/19

2N 32 34C