

This map was prepared
for assessment purposes

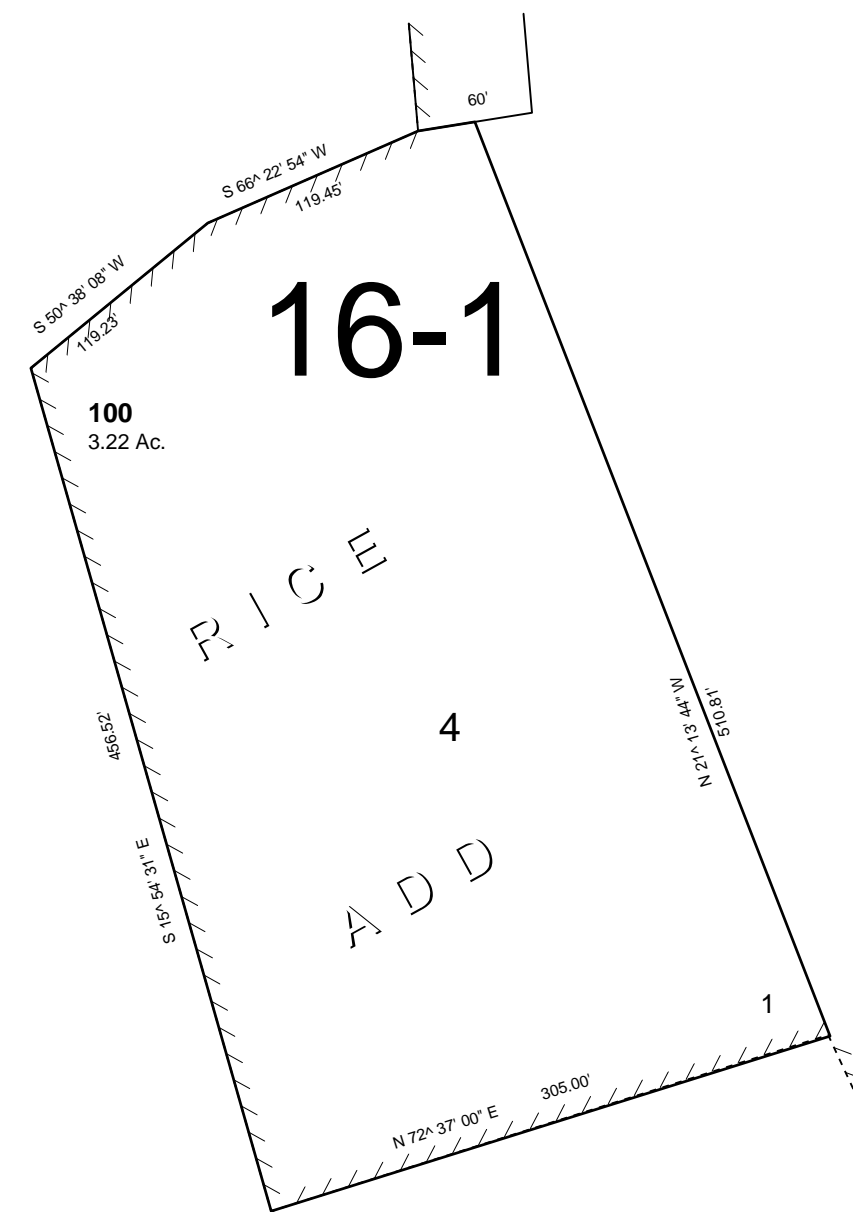
NW1/4 SW1/4 T NR E WM
UMATILLA COUNTY
SCALE 1"=100'

2N 32 16DD

AERIAL PHOTO NO. 4P-59

See Map 2N 32 16DA

See Map 2N 32 16



See Map 2N 32 16CC

Revised: 02-07-13

2N 32 16DD