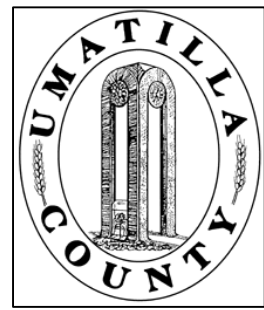


This map was prepared for Assessment & Taxation purposes only and was NOT prepared nor is it suitable for legal, engineering or surveying purposes.

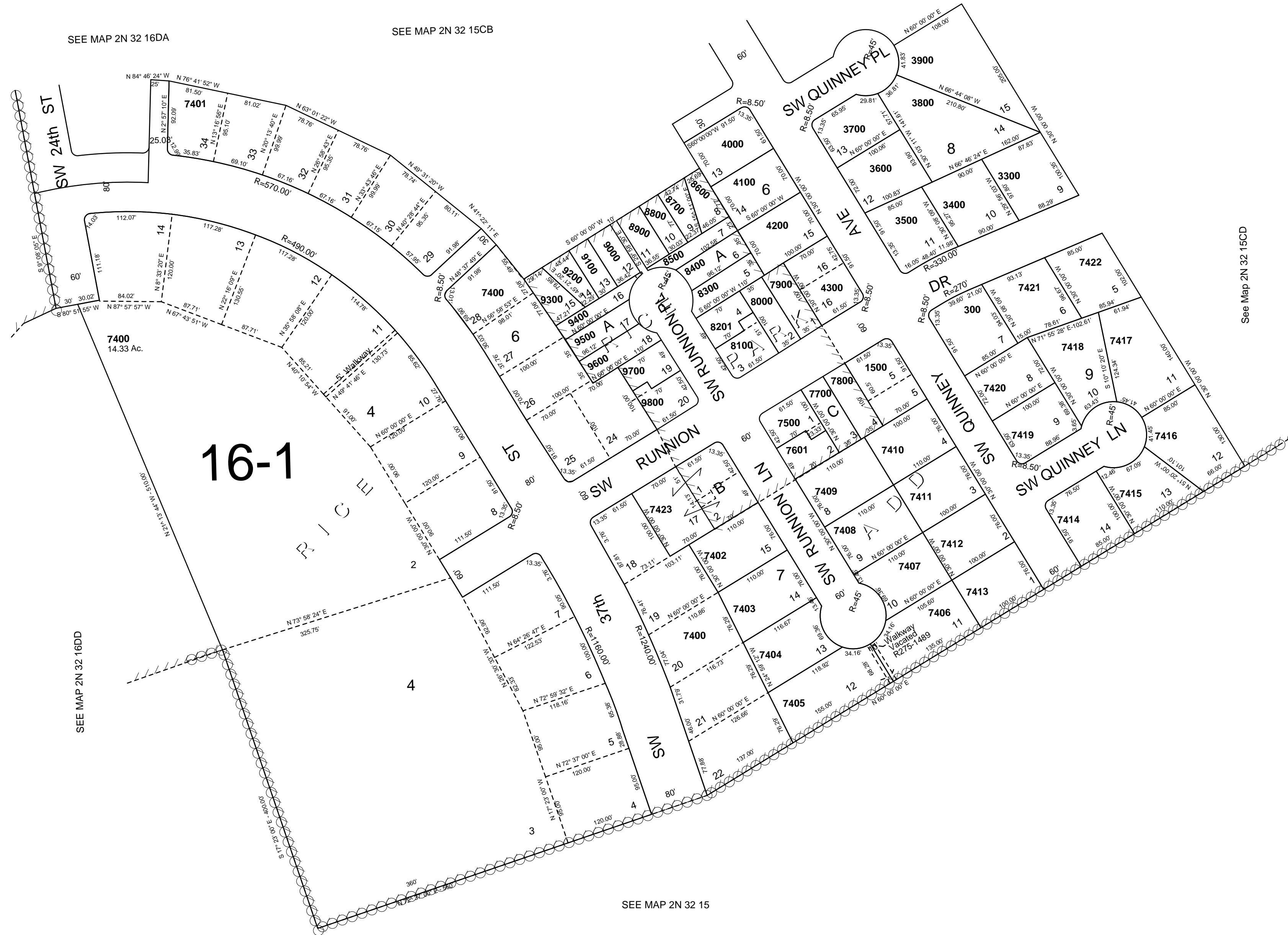


SW1/4 SW1/4 SEC 15 T 2N R 32E WM UMATILLA COUNTY

SCALE: 1" = 100'

2N 32 15CC

AERIAL PHOTO NO. 4P-59



- CANCELLED
- TL 1600
 - 1700
 - 2600
 - 4400
 - 4500
 - 4600
 - 4700
 - 4800
 - 4900
 - 5000
 - 8200
 - 9701
 - 10000
 - 7600
 - 100
 - 200
 - 400-1400, Inc.
 - 1800-2500, Inc.
 - 2700-3200, Inc.
 - 5100-7300, Inc.
 - 10001
 - 9900
 - 1501
 - 4301

See Map 2N 32 15CCD

SEE MAP 2N 32 16DA

SEE MAP 2N 32 15CB

SEE MAP 2N 32 16DD

SEE MAP 2N 32 15

REVISED: 7/06/11

2N 32 15CC