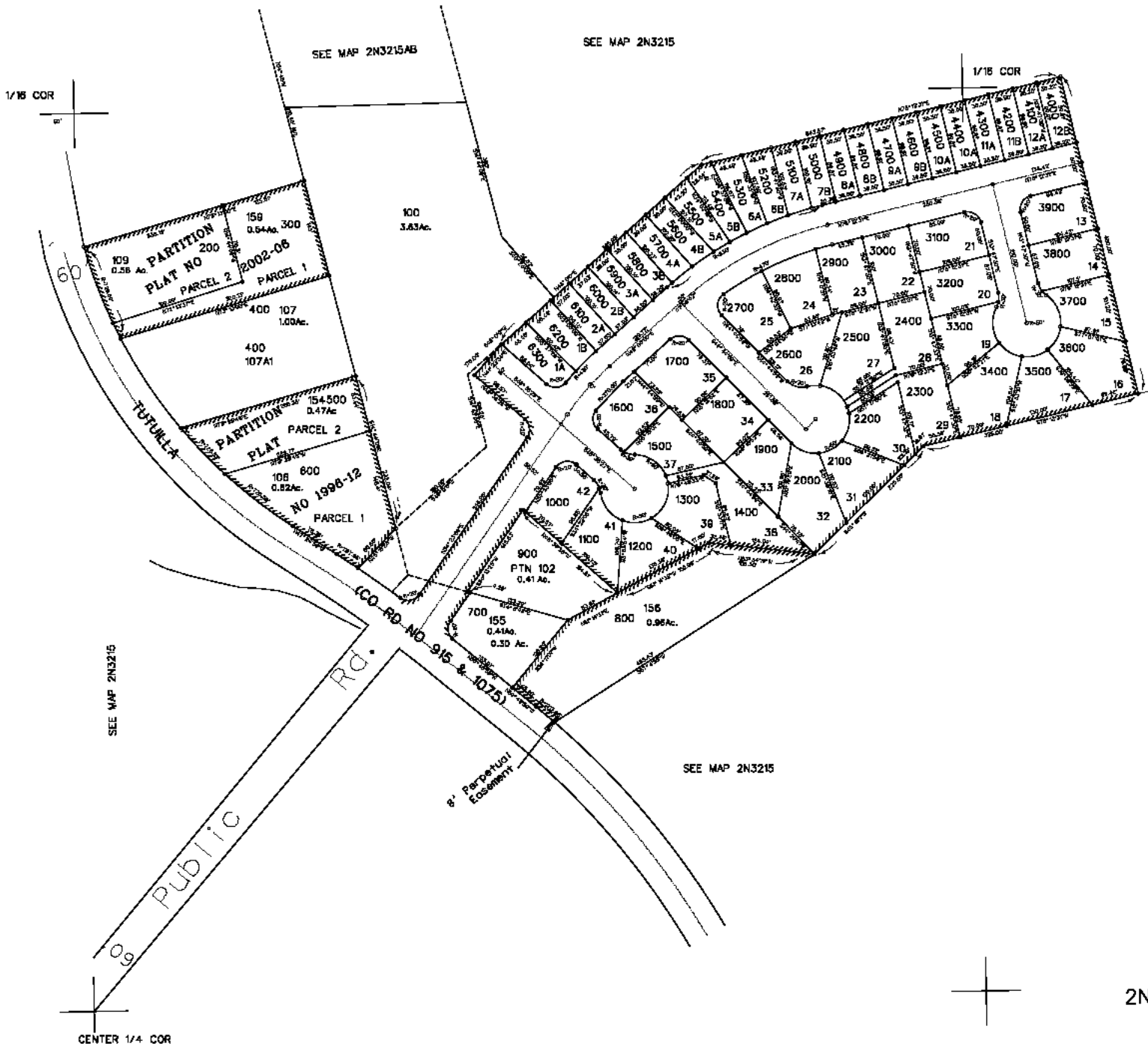


THIS MAP WAS PREPARED FOR
ASSESSMENT PURPOSES ONLY

SW1/4 NE1/4 SEC 15 T2N R32E WM
UMATILLA COUNTY

2N3215CA

1" = 100'



SEE MAP 2N3215

SEE MAP 2N3215

SEE MAP 2N3215

SEE MAP 2N3215

CENTER 1/4 COR

2N3215CA