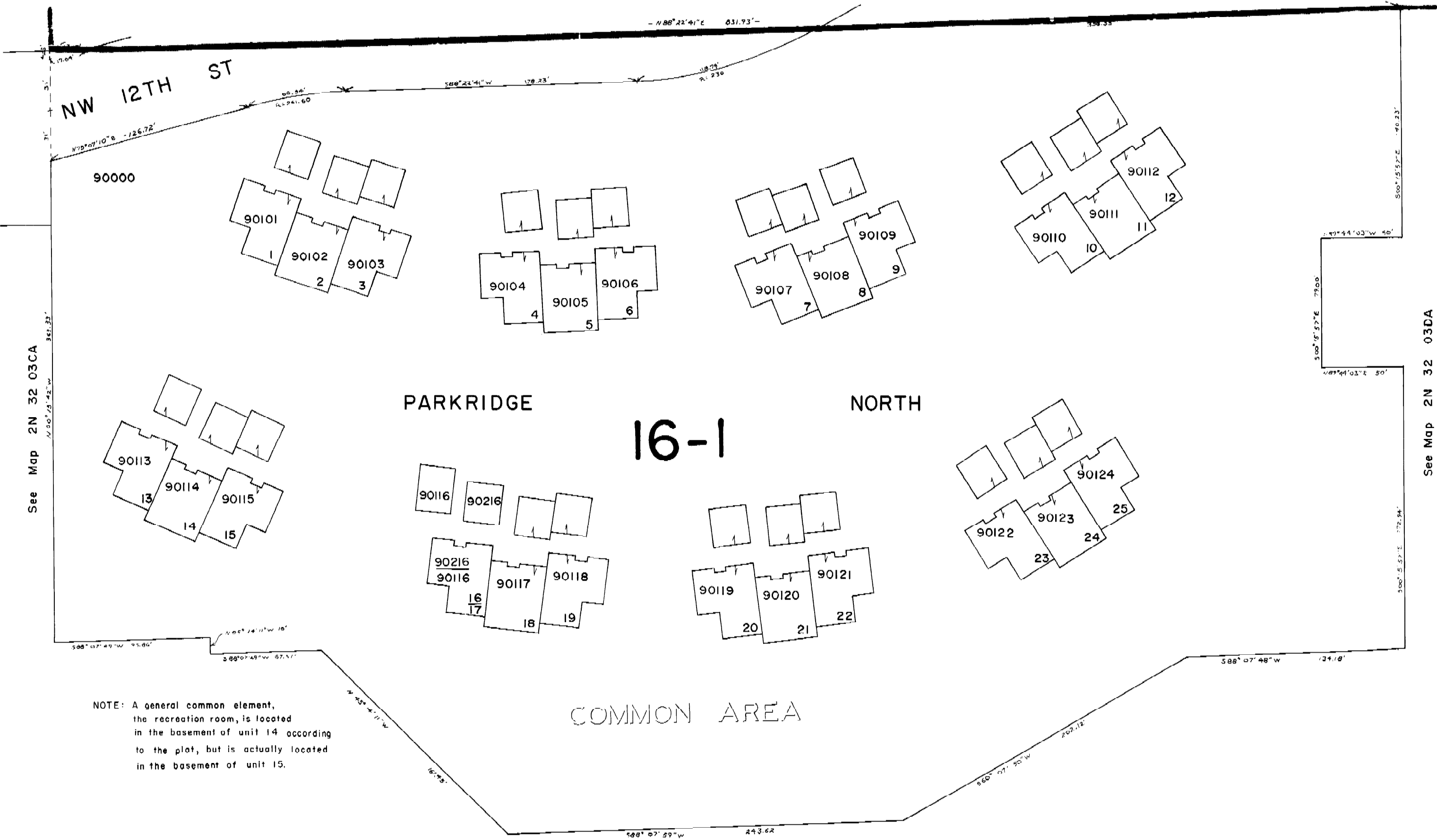


THIS MAP WAS PREPARED FOR  
ASSESSMENT PURPOSES ONLY

NW1/4 SE1/4 Sec.3 T.2N R.32E.W.M.  
UMATILLA COUNTY  
1" = 50'

2N 32 03Db  
SUPPLEMENTAL  
MAP NO.1

See Map 2N 32 03



NOTE: A general common element,  
the recreation room, is located  
in the basement of unit 14 according  
to the plot, but is actually located  
in the basement of unit 15.

See Map 2N 32 03Db

2N 32 03 Db  
SUPPLEMENTAL  
MAP NO.1