

SHEET NO.1

SE 1/4 SE 1/4 SEC 09 T2N R32E WM

UMATILLA COUNTY

SCALE 1" = 100'

Pendleton

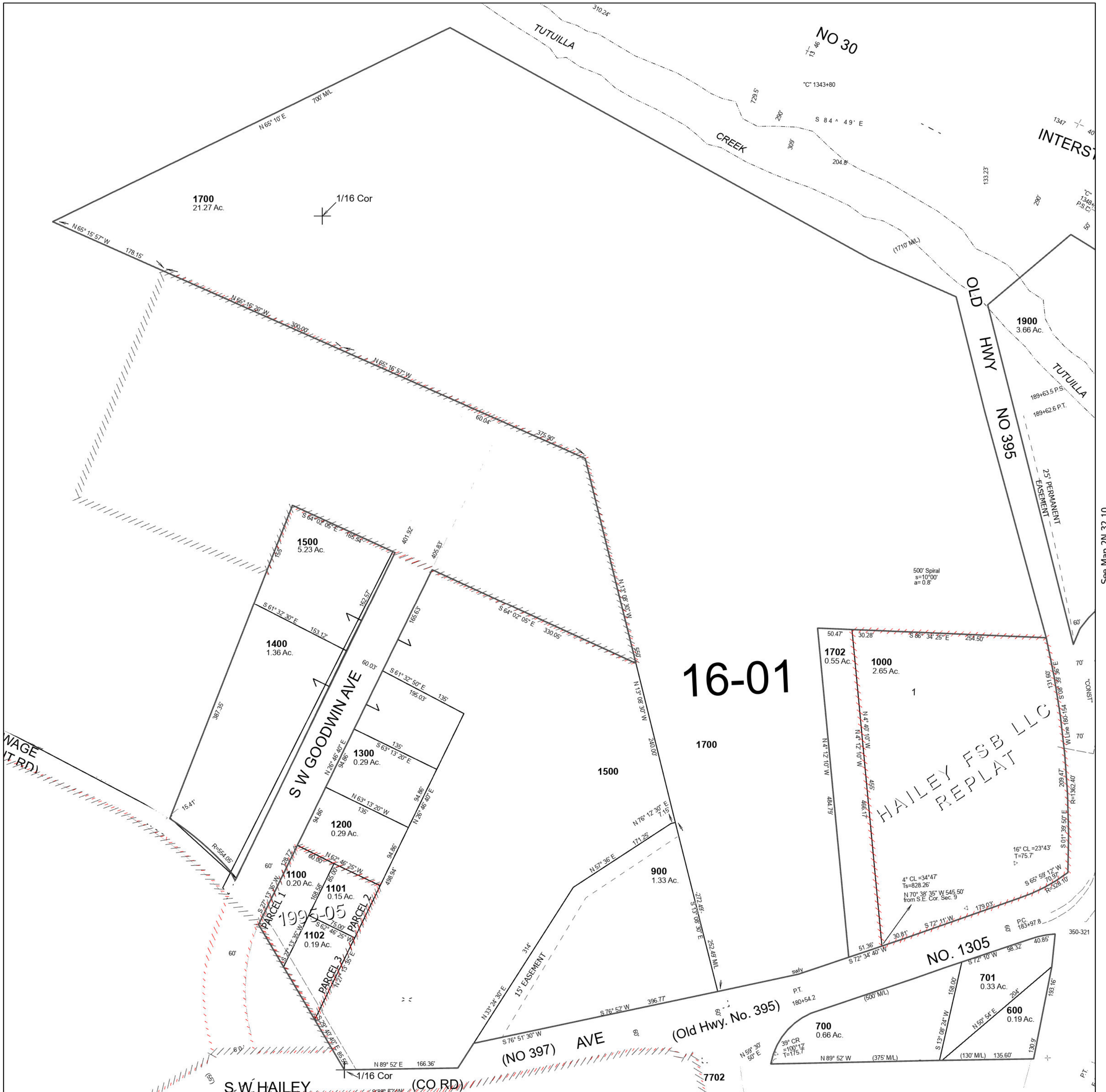
This map was prepared for Assessment & Taxation purposes only and was NOT prepared nor is it suitable for legal, engineering or surveying purposes.

Cancelled Tax Lots

- 100
- 200
- 300
- 400
- 501
- 800
- 1600
- 1700
- 1800

See Map 2N 32 09DA

SHEET NO.1 2N 32 09DD



See Map 2N 32 09DC

See Map 2N 32 10

Revised 9/22/2023

See Map 2N 32 16AA

SHEET NO.1 2N 32 09DD

SHEET NO.2

SE 1/4 SE 1/4 SEC 09 T2N R32E WM

UMATILLA COUNTY

SCALE 1" = 100'

Pendleton

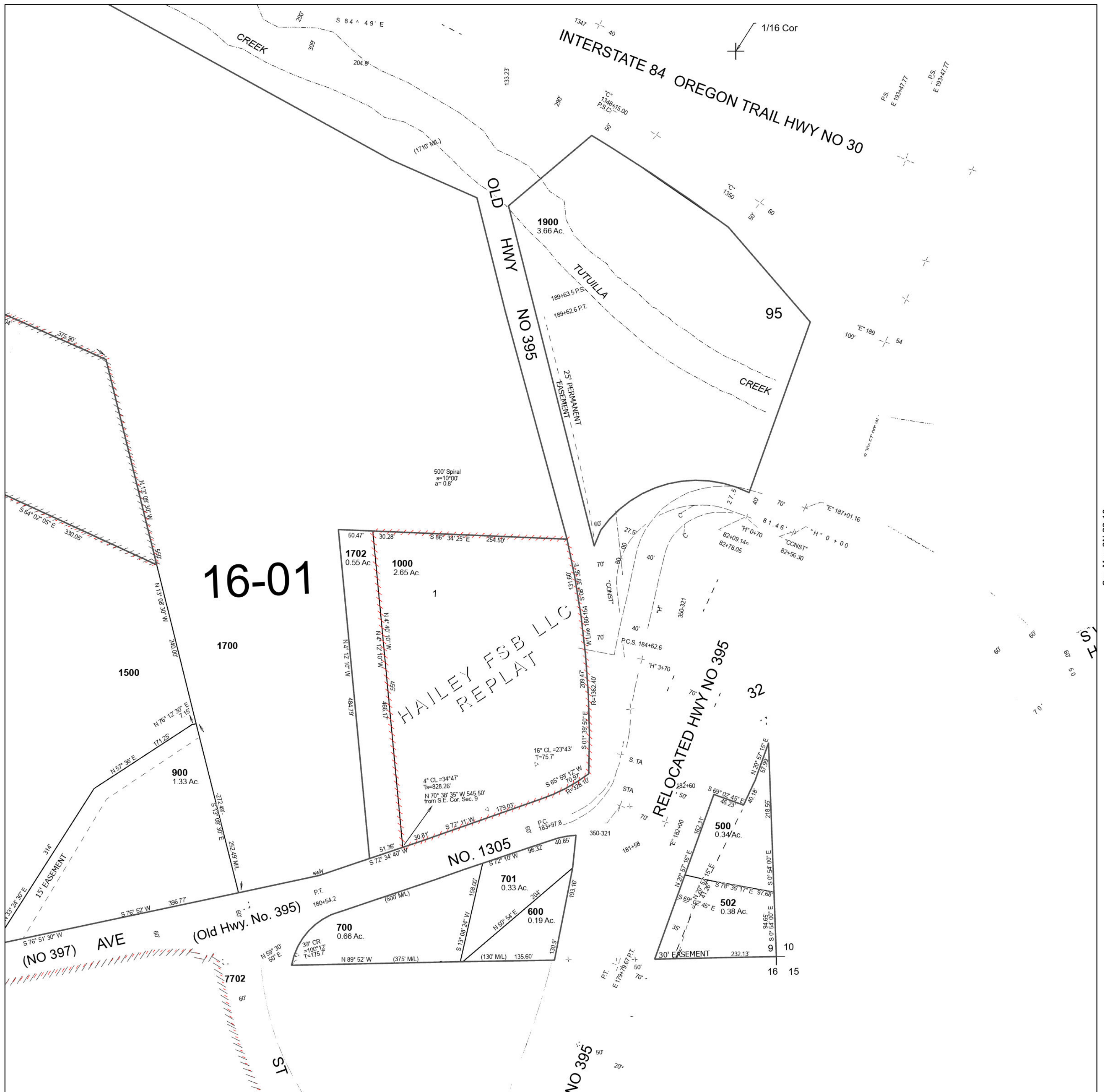
SHEET NO.2 2N 32 09DD

This map was prepared for Assessment & Taxation purposes only and was NOT prepared nor is it suitable for legal, engineering or surveying purposes.

Cancelled Tax Lots

- 100
- 200
- 300
- 400
- 501
- 800
- 1600
- 1700
- 1800

See Map 2N 32 09DA



16-01

HAILEY FSB LLC
REPLAT

RELOCATED HWY NO 395

NO. 1305

(NO 397) AVE

(Old Hwy. No. 395)

See Map 2N 32 09DC

See Map 2N 32 10