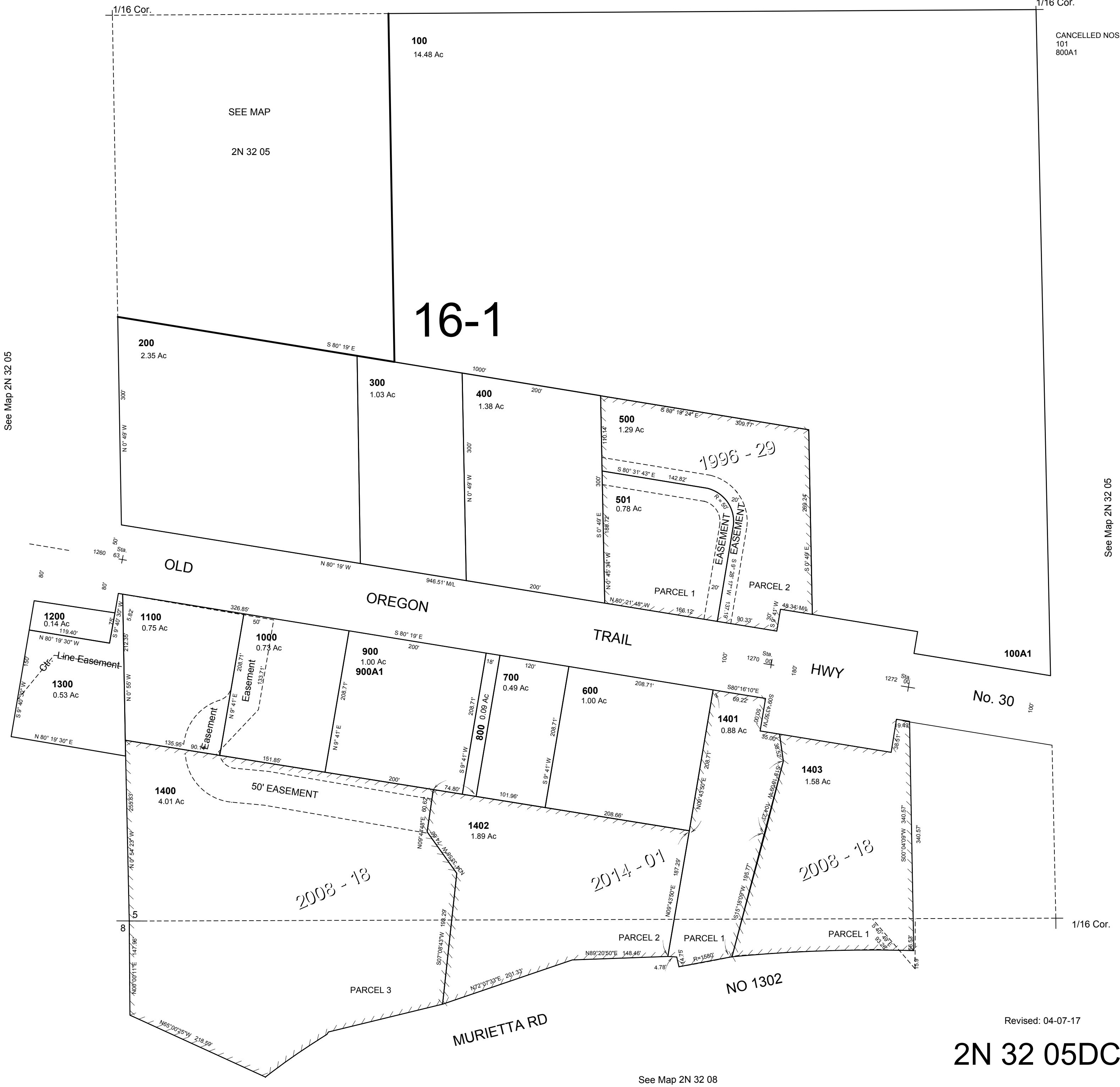


This map was prepared for Assessment & Taxation purposes only and was NOT prepared nor is it suitable for legal, engineering or surveying purposes.

SW 1/4 SE1/4 SEC 5 T2N R32E WM UMATILLA COUNTY SCALE 1"=100'

2N 32 05DC
AERIAL PHOTO NO NZ-4P-105

See Map 2N 32 05



2N 32 05DC