

This map was prepared for Assessment & Taxation purposes only and was NOT prepared nor is it suitable for legal, engineering or surveying purposes.

Cancelled Tax Lots

SHEET NO.1

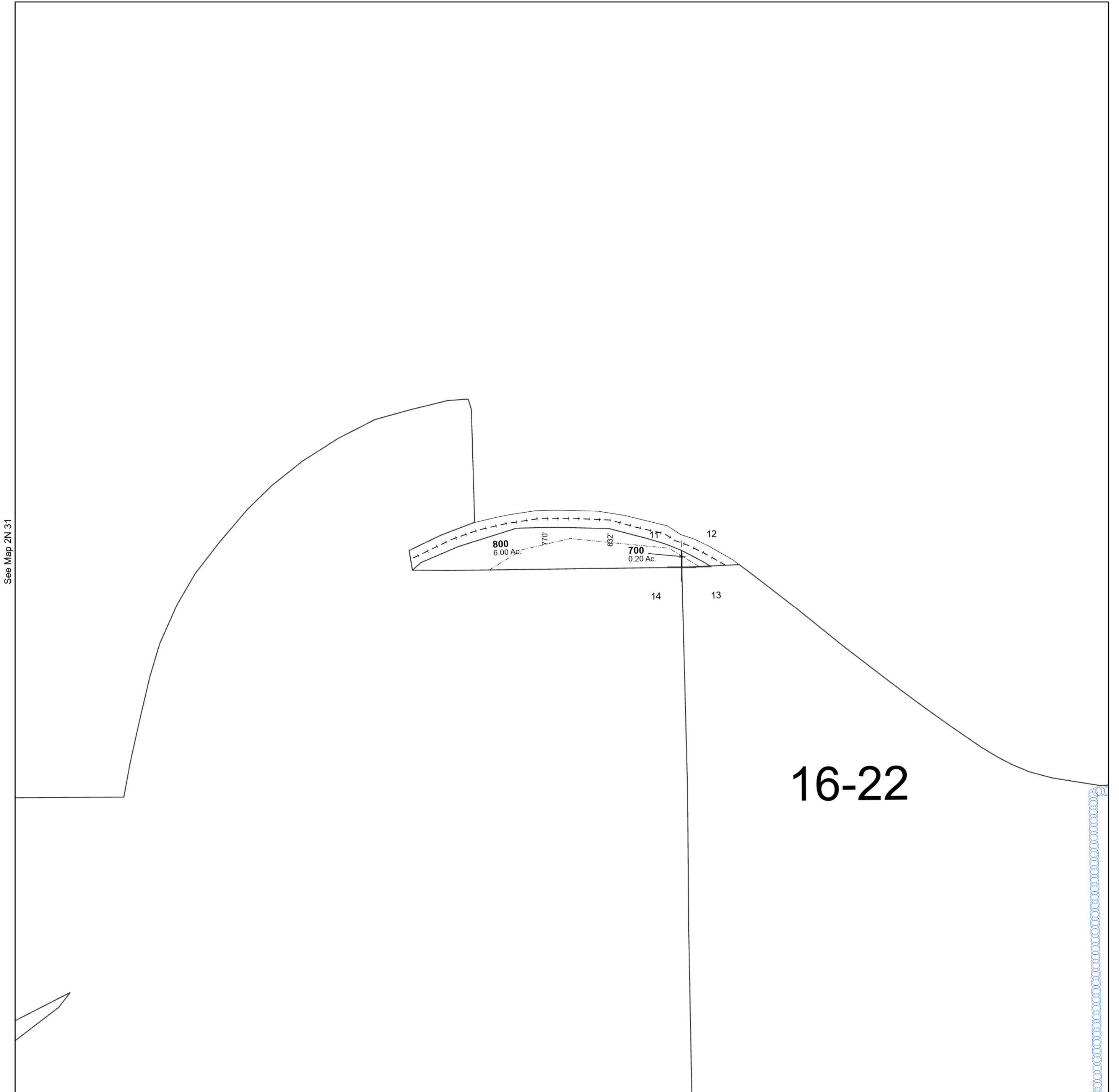
SEC 12 T2N R31E WM

UMATILLA COUNTY

2N 31 12
SHEET NO.1

SCALE 1" =400'

See Map 2N 31 01



See Map 2N 31

See Map 2N 32

Revised 10/3/2023

See Map 2N 31 13

SHEET NO.1 2N 31 12

This map was prepared for Assessment & Taxation purposes only and was NOT prepared nor is it suitable for legal, engineering or surveying purposes.

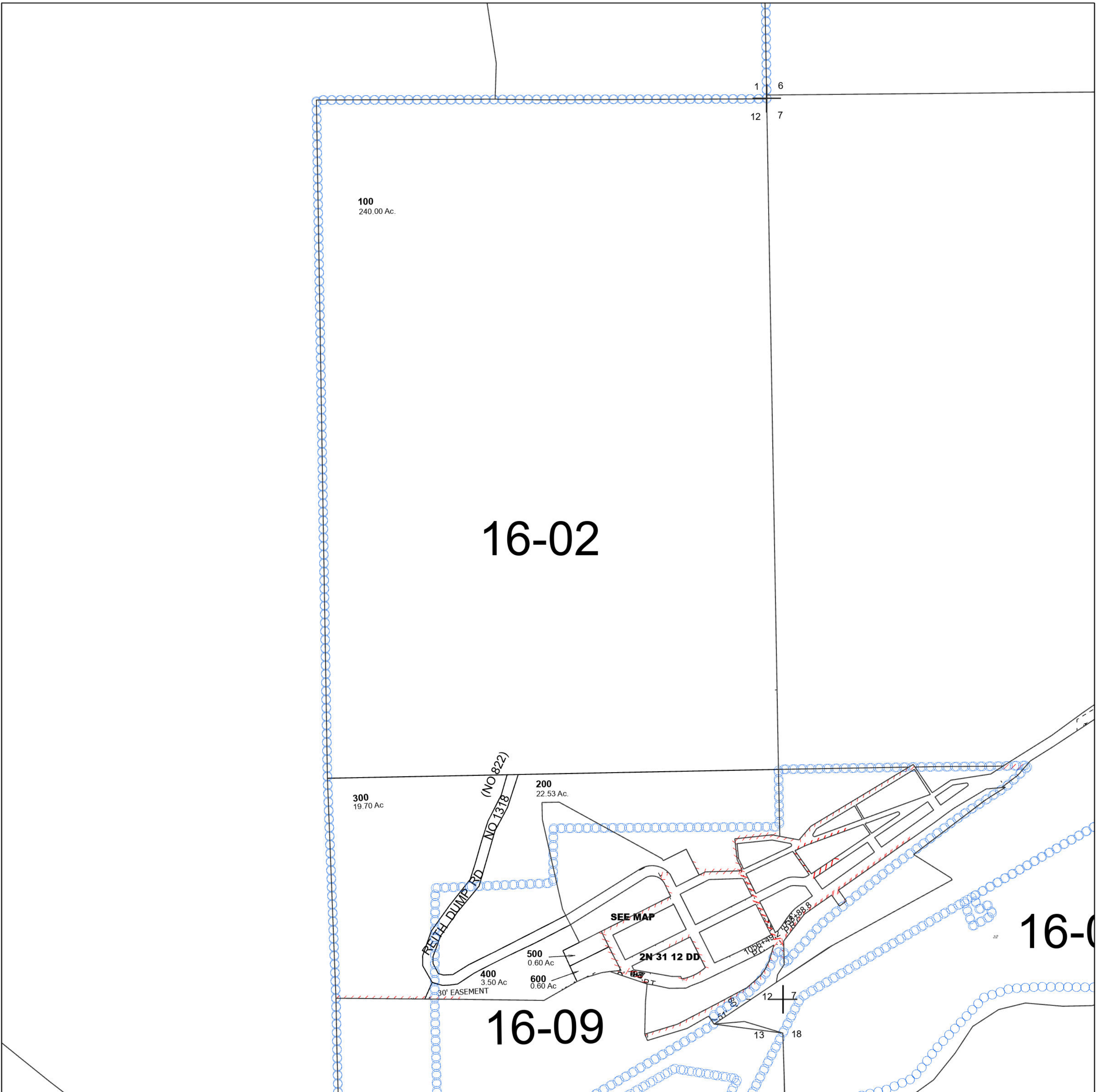
Cancelled Tax Lots

SHEET NO.2 SEC 12 T2N R31E WM UMATILLA COUNTY

2N 31 12 SHEET NO.2

SCALE 1" =400'

See Map 2N 31 01



See Map 2N 31

See Map 2N 32

Revised 10/3/2023

See Map 2N 31 13

SHEET NO.2 2N 31 12