

This map was prepared for Assessment & Taxation purposes only and was NOT prepared nor is it suitable for legal, engineering or surveying purposes.

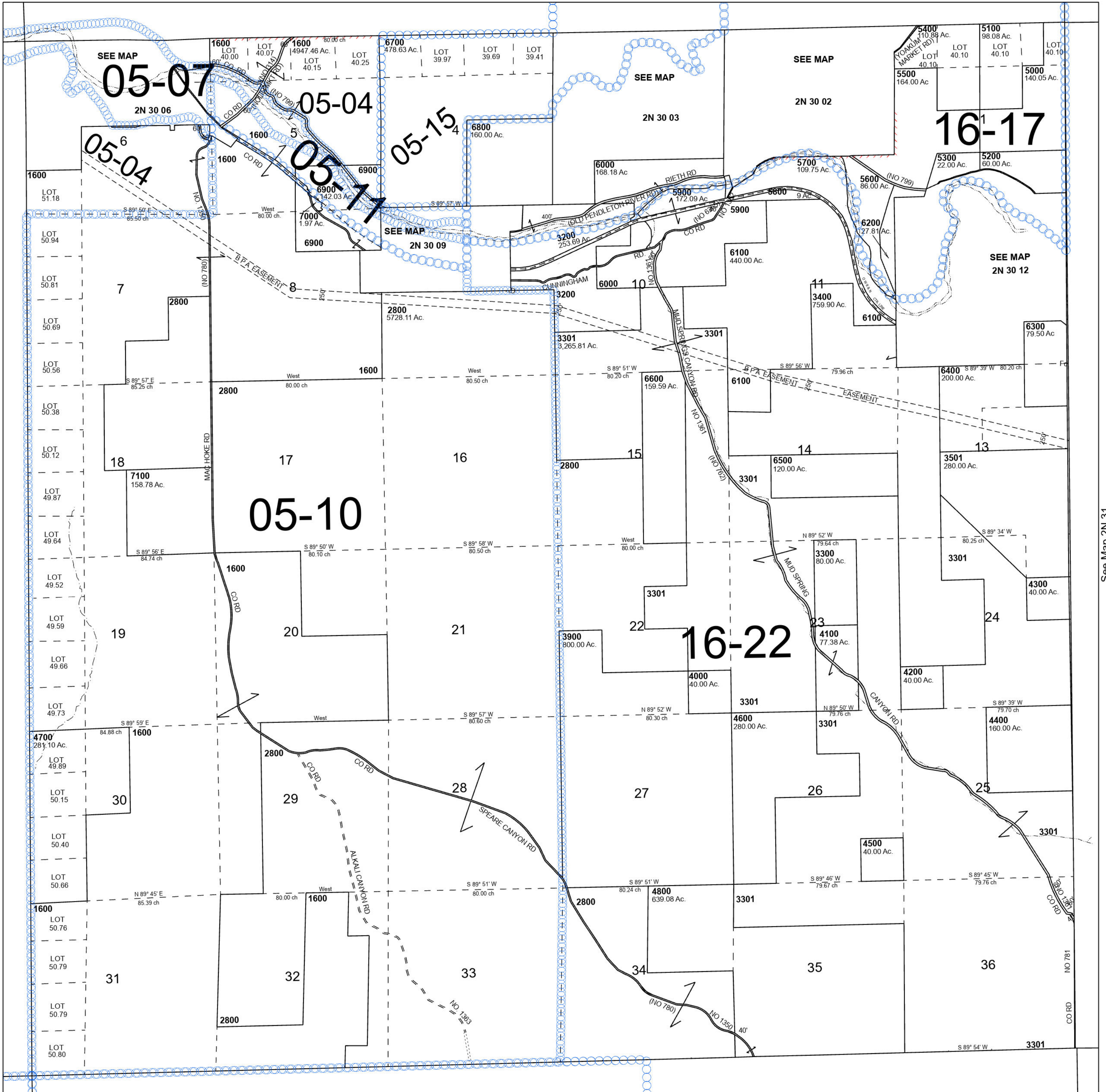
# T2N R30E WM UMATILLA COUNTY

2N 30

SCALE 1" = 2,000'

Cancelled Tax Lots				
100	1100	1800	2601	3700
200	1101	1900	2700	3800
300	1200	1990-1992	2900-2905	4900
400	1201	2000	3000	
500	1300	2100	3100	
600-603	1301	2200	3201	
700-702	1400	2300	3500	
800	1500	2400	3502	
900-902	1602	2500	3503	
1000-1005	1700	2600	3600	

See Map 3N 30



See Map 2N 29

See Map 2N 31

Revised 8/6/2024

See Map 1N 30

2N 30