

This map was prepared for Assessment & Taxation purposes only and was NOT prepared nor is it suitable for legal, engineering or surveying purposes.

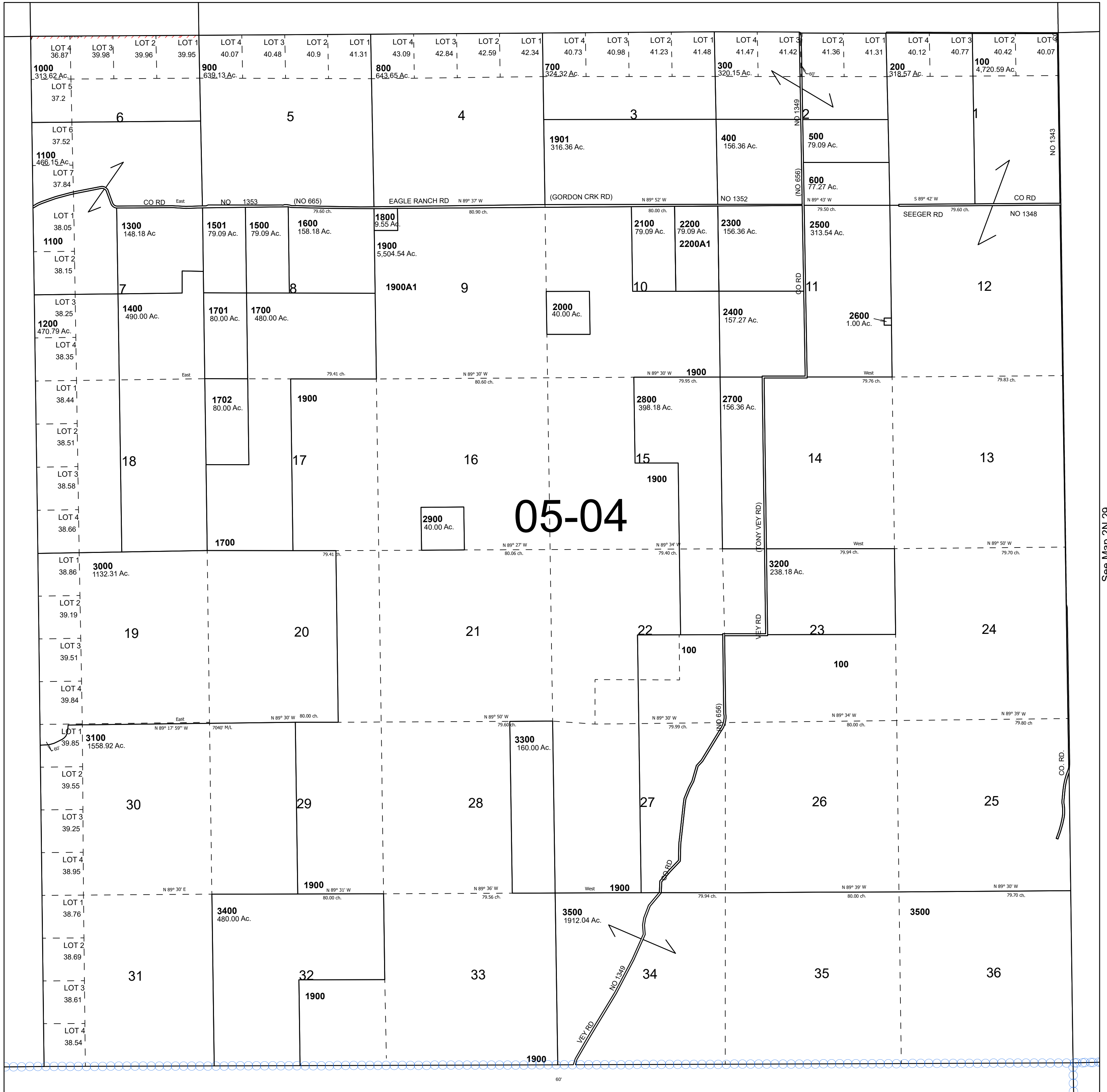
Cancelled Tax Lots  
1001

# T2N R28E WM UMATILLA COUNTY

SCALE 1" = 2,000'

2N 28

See Map 3N 28



See Map 2N 27

See Map 2N 29

Revised 12/18/2024

2N 28