

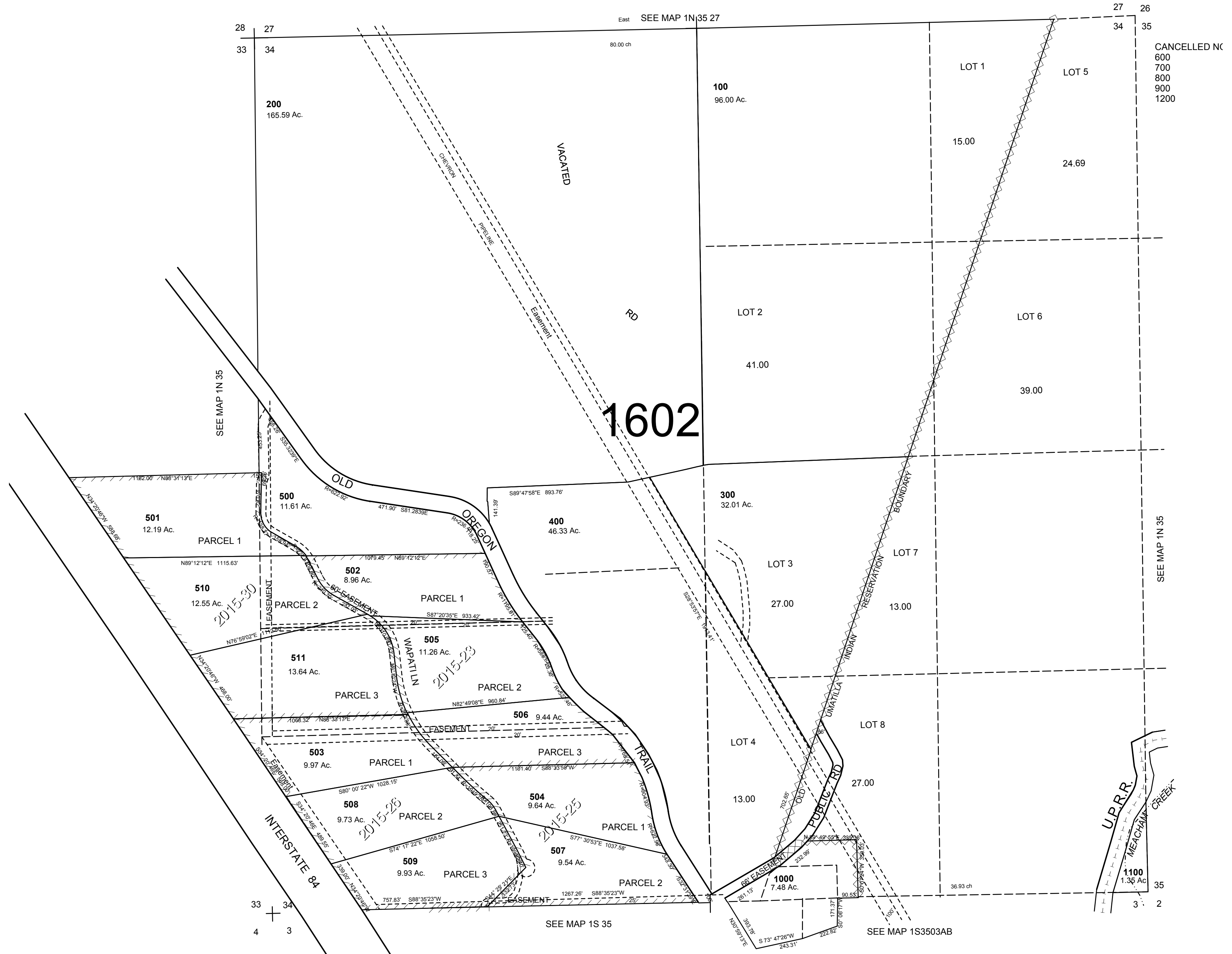
This map was prepared for Assessment & Taxation purposes only and was NOT prepared nor is it suitable for legal, engineering or surveying purposes.

# SEC 34 T1N R35E WM UMATILLA COUNTY

1"=400'

# 1N 35 34

AERIAL PHOTO NO 3P-153



REVISED: 11-14-17

# 1N 35 34