

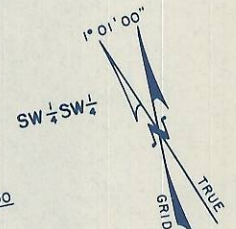
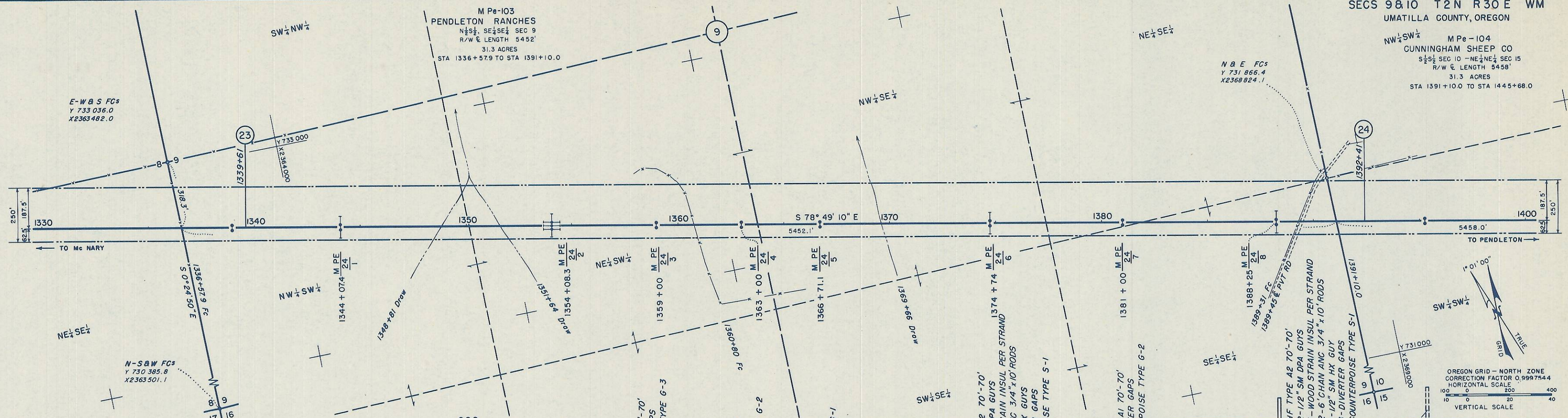
M Pe-104
CUNNINGHAM SHEEP CO
S 1/2 SEC 10 - NE 1/4 SEC 15
R/W @ LENGTH 5458'
31.3 ACRES
STA 1391+10.0 TO STA 1445+68.0

E-W & S FCS
Y 733 036.0
X 2363 482.0

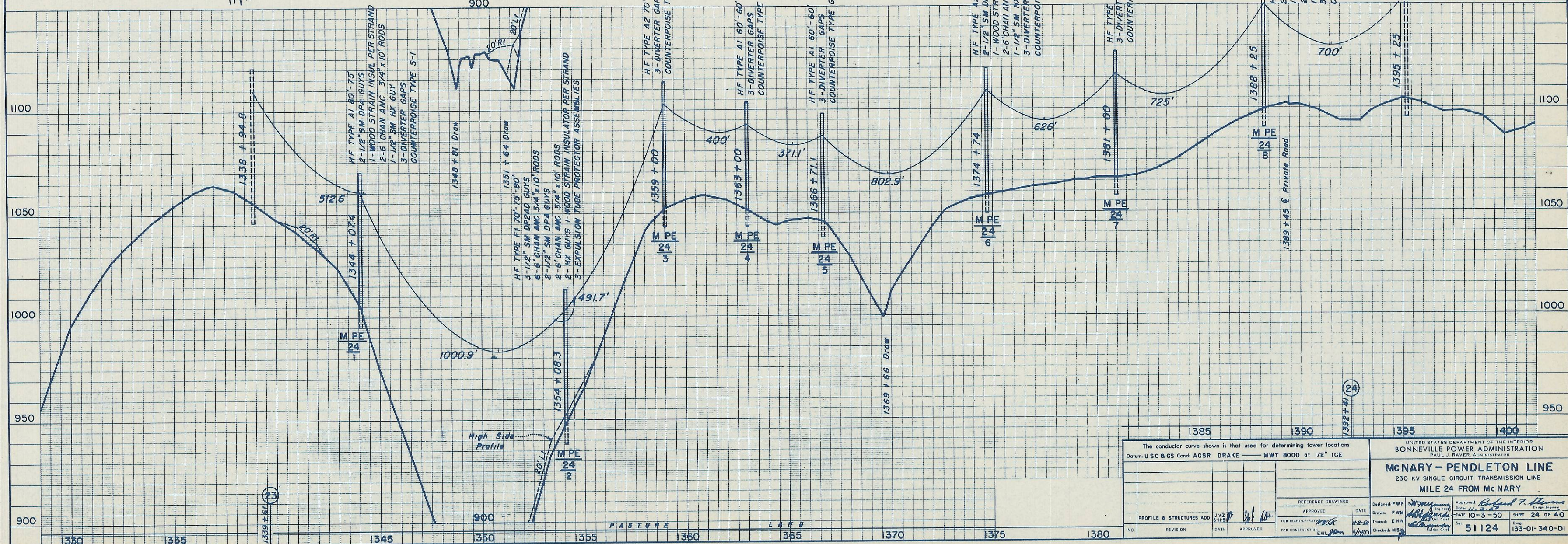
N-S & W FCS
Y 730 385.8
X 2363 501.1

N & E FCS
Y 731 866.4
X 2368 824.1

M Pe-103
PENDLETON RANGES
NE 1/4 SEC 9, SE 1/4 SEC 9
R/W @ LENGTH 5452'
31.3 ACRES
STA 1336+57.9 TO STA 1391+10.0



OREGON GRID - NORTH ZONE
CORRECTION FACTOR 0.9997544
HORIZONTAL SCALE
VERTICAL SCALE



The conductor curve shown is that used for determining tower locations Datum: USC & GS Cond: AGSR DRAKE — MWT 8000 at 1/2" ICE		UNITED STATES DEPARTMENT OF THE INTERIOR BONNEVILLE POWER ADMINISTRATION PAUL J. RAVER, ADMINISTRATOR	
McNARY - PENDLETON LINE 230 KV SINGLE CIRCUIT TRANSMISSION LINE MILE 24 FROM McNARY		Designed: PWF Checked: EHL Date: 10-3-50 Sheet: 24 OF 40	
APPROVED	DATE	DESIGNED	DATE
FOR REVISION	DATE	CHECKED	DATE
NO.	REVISION	DATE	APPROVED