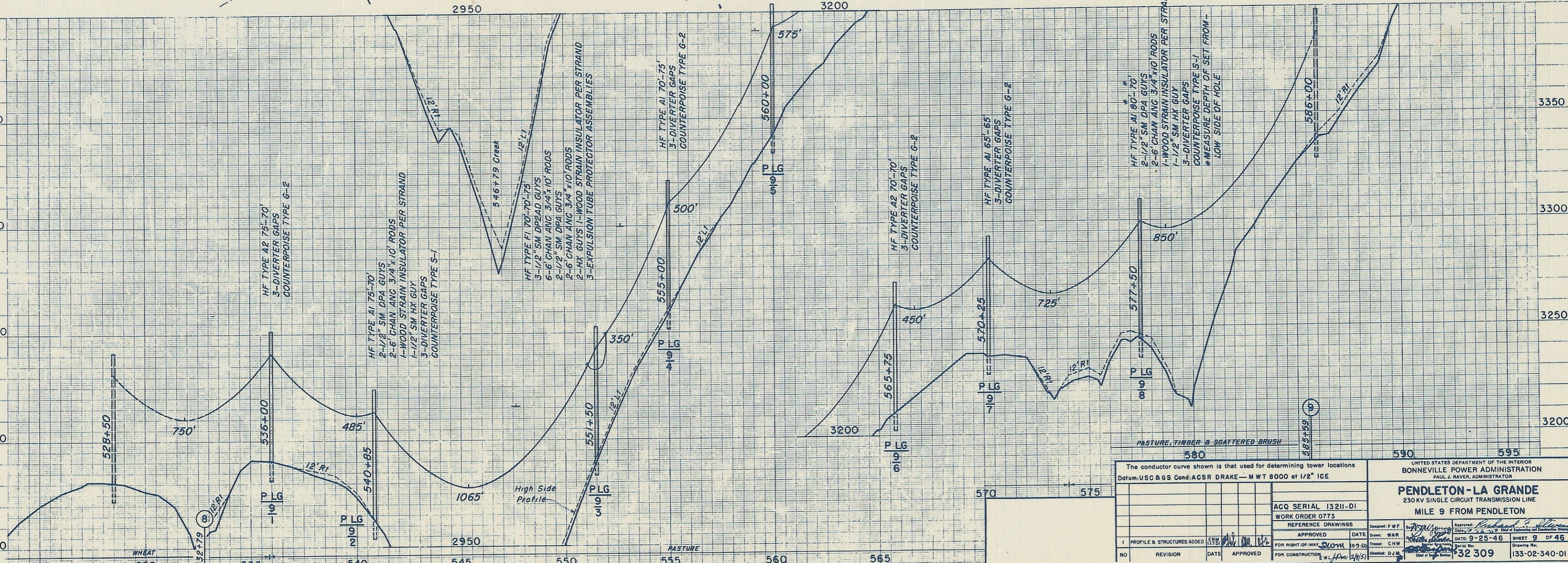
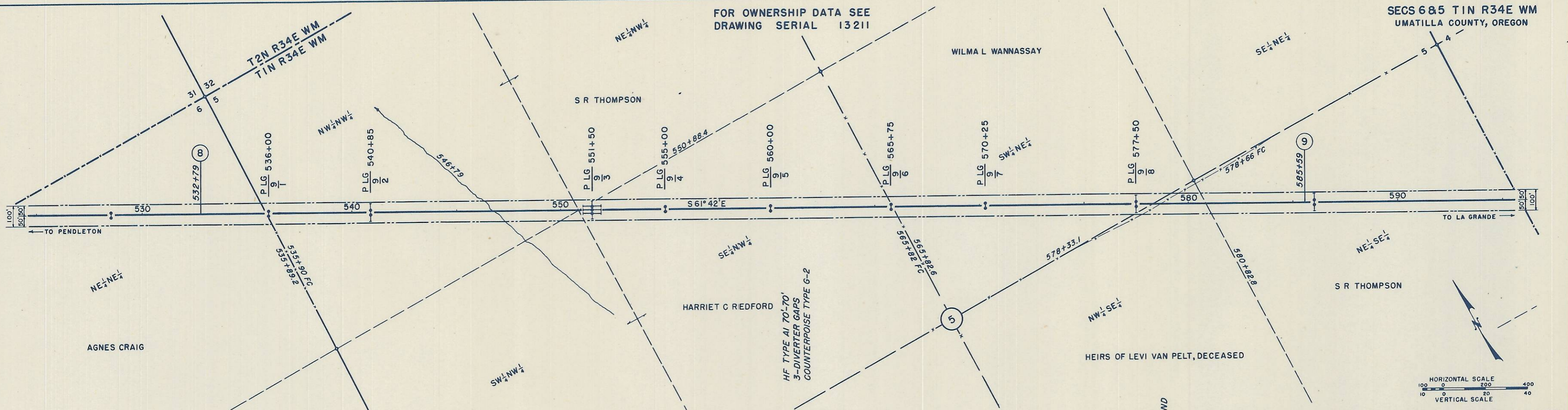


FOR OWNERSHIP DATA SEE
DRAWING SERIAL 13211

SECS 6&5 T1N R34E WM
UMATILLA COUNTY, OREGON



The conductor curve shown is that used for determining tower locations Datum: USC & GS Cond: ACSR DRAKE - MWT 8000 at 1/2" ICE		UNITED STATES DEPARTMENT OF THE INTERIOR BONNEVILLE POWER ADMINISTRATION PAUL J. RAVER, ADMINISTRATOR	
ACQ SERIAL 13211-DI WORK ORDER 0773		PENDLETON - LA GRANDE 230 KV SINGLE CIRCUIT TRANSMISSION LINE MILE 9 FROM PENDLETON	
DESIGNED: F.W.F.	DRAWN: WAR	DATE: 9-25-46	SHEET 9 OF 46
APPROVED: [Signature]	DATE: 10-30-46	TRACED: C.H.W.	CHECKED: D.J.M.
FOR RIGHT-OF-WAY: [Signature]	FOR CONSTRUCTION: [Signature]	Serial No: 32309	Drawing No: 133-02-340-DI