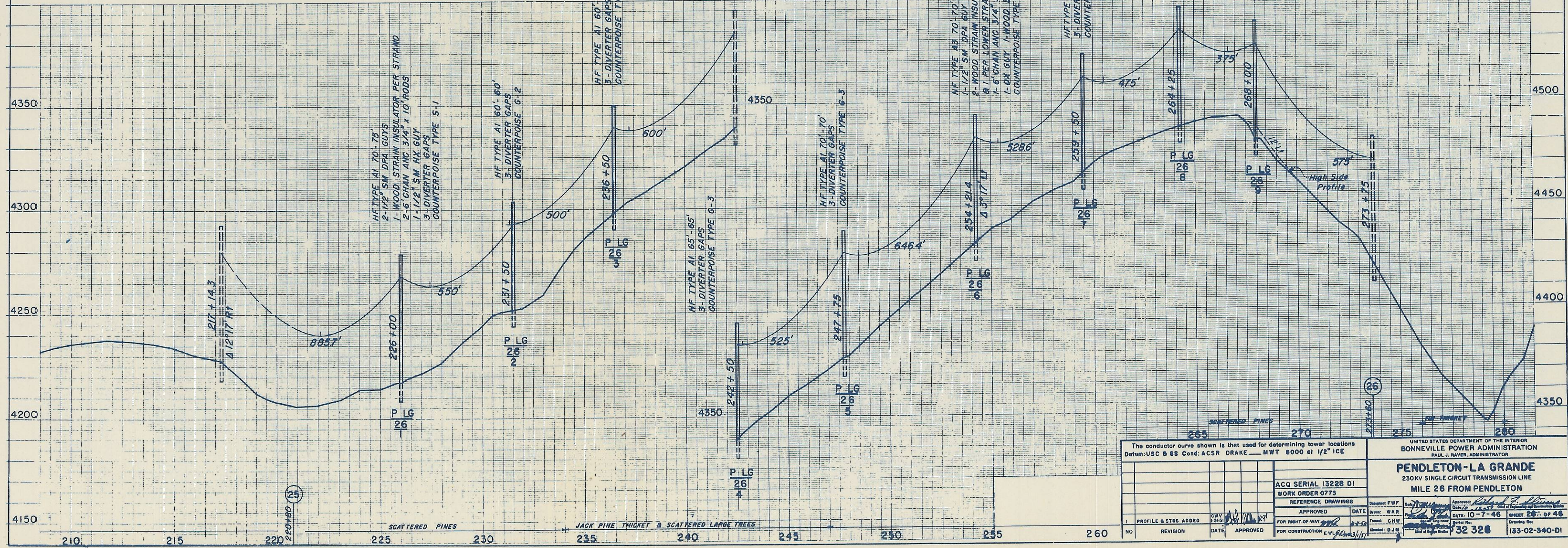
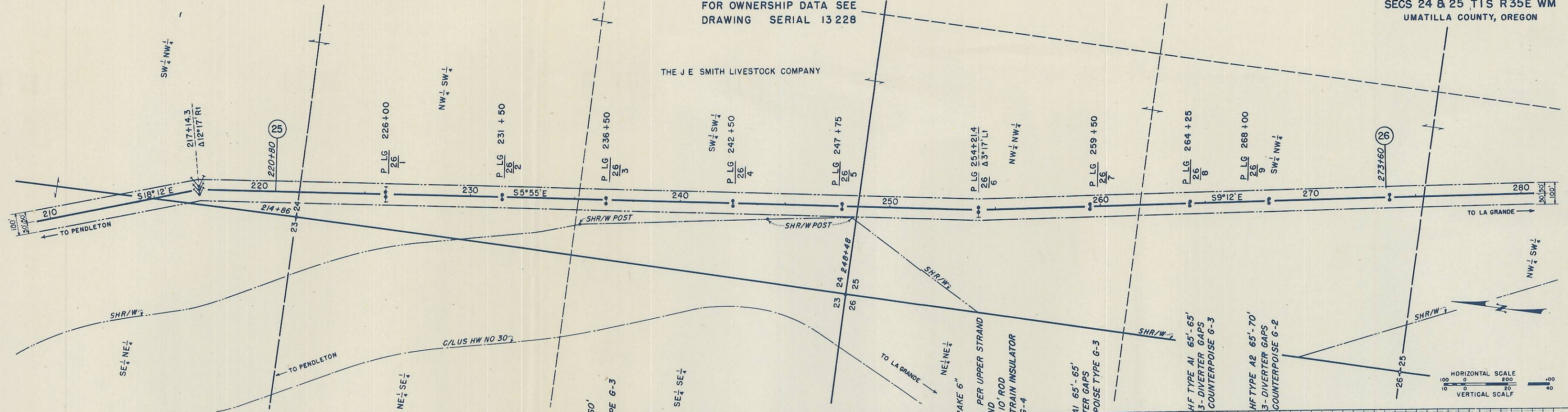


THE J E SMITH LIVESTOCK COMPANY



The conductor curve shown is that used for determining tower locations Datum: USC & GS Cond: ACSR DRAKE MWT @000 at 1/2" ICE		UNITED STATES DEPARTMENT OF THE INTERIOR BONNEVILLE POWER ADMINISTRATION PAUL J. RAVEN, ADMINISTRATOR	
ACQ SERIAL 13228 DI WORK ORDER 0773		PENDELTON-LA GRANDE 230KV SINGLE CIRCUIT TRANSMISSION LINE MILE 26 FROM PENDLETON	
APPROVED	DATE	Drawn: W.A.R.	Checked: R.A.P.
FOR RIGHT-OF-WAY	DATE	Checked: C.H.W.	Serial No: 32 328
FOR CONSTRUCTION	DATE	Checked: D.J.B.	Drawing No: 133-02-340-DI