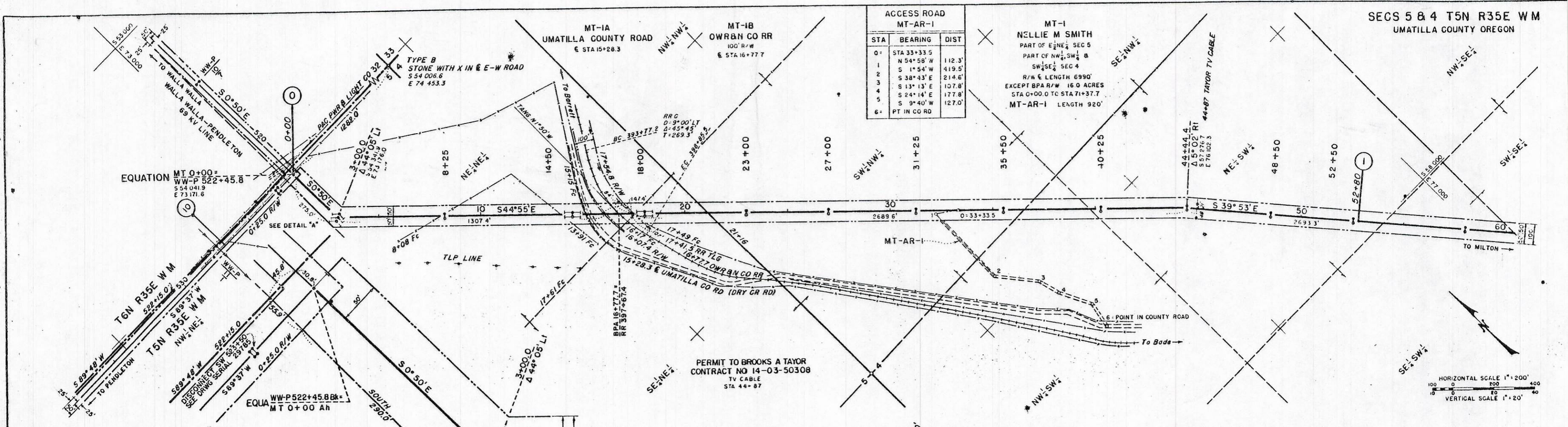


SECS 5 & 4 T5N R35E WM
UMATILLA COUNTY OREGON

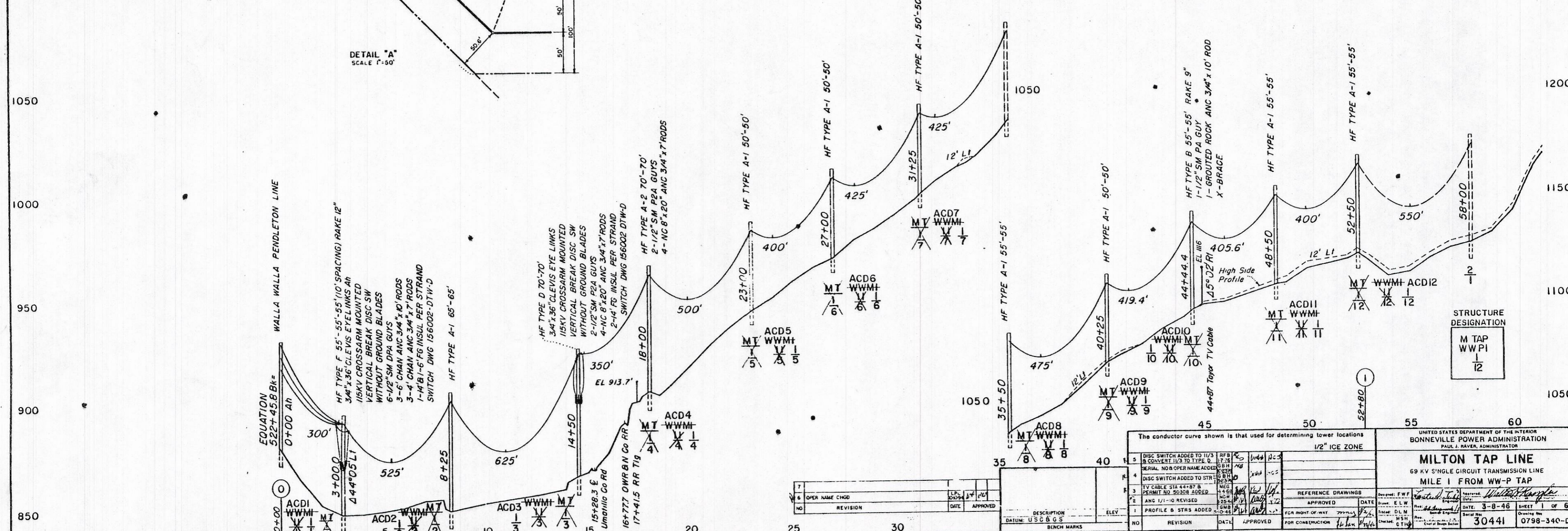
ACCESS ROAD
MT-AR-1

STA	BEARING	DIST
0+	STA 33+33.5	
1	N 54° 58' W	112.3'
2	S 1° 54' W	419.5'
3	S 38° 43' E	214.6'
4	S 13° 13' E	107.8'
5	S 24° 14' E	177.8'
6	S 9° 40' W	127.0'
6+	PT IN CO RD	

MT-1
NELLIE M SMITH
PART OF E 1/2 SEC 5
PART OF NW 1/4 SW 1/4
SW 1/4 SEC 4
R/W & LENGTH 6990'
EXCEPT BPA R/W 16.0 ACRES
STA 0+00.0 TO STA 71+37.7
MT-AR-1 LENGTH 920'



DETAIL "A"
SCALE 1"=50'



STRUCTURE DESIGNATION
M TAP
WWPI
12

The conductor curve shown is that used for determining tower locations
1/2" ICE ZONE

NO	REVISION	DATE	APPROVED	DESCRIPTION
1	PROFILE & STRS ADDED			
2	ANG 1/1-10 REVISED			
3	PERMIT NO 50308 ADDED			
4	DISC SWITCH ADDED TO STR			
5	CONVERT 1/3 TO TYPE Q			
6	OPER NAME CHGD			
7				

UNITED STATES DEPARTMENT OF THE INTERIOR
BONNEVILLE POWER ADMINISTRATION
PAUL J. RAVEN, ADMINISTRATOR

MILTON TAP LINE
69 KV SINGLE CIRCUIT TRANSMISSION LINE
MILE 1 FROM WW-P TAP

DATE: 3-8-46
SHEET 1 OF 6
30441 0798-340-D1