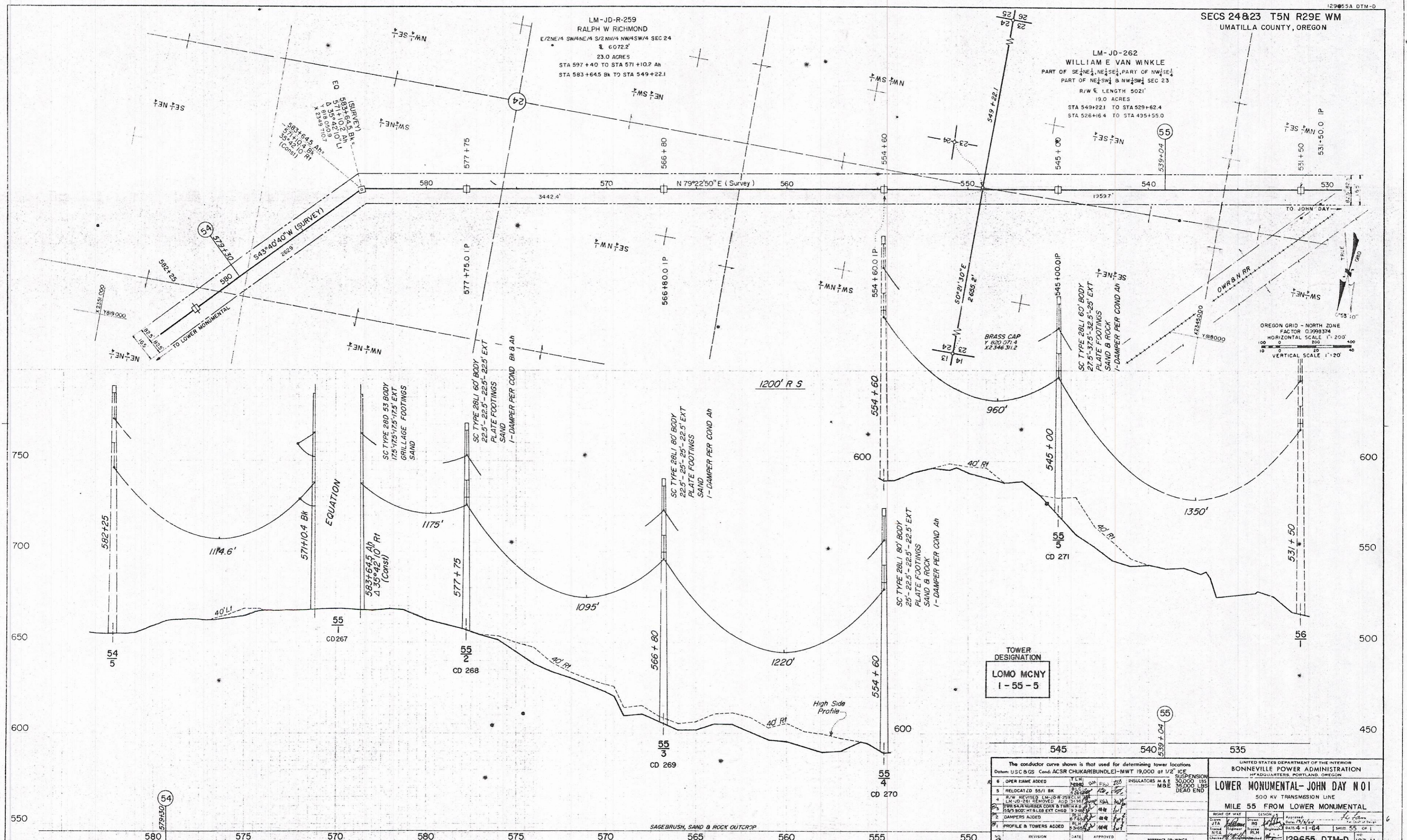


SECS 24&23 T5N R29E WM
UMATILLA COUNTY, OREGON

LM-JD-R-259
RALPH W RICHMOND
E/2NE/4 SW/4NE/4 S/2NW/4 NW/4SW/4 SEC 24
6.072.2'
23.0 ACRES
STA 597+40 TO STA 571+10.2 AH
STA 583+64.5 BK TO STA 549+22.1

LM-JD-262
WILLIAM E VAN WINKLE
PART OF SE 1/4 NE 1/4 SE 1/4, PART OF NW 1/4 SE 1/4
PART OF NE 1/4 SW 1/4 & NW 1/4 SW 1/4 SEC 23
R/W & LENGTH 5021'
19.0 ACRES
STA 549+221 TO STA 529+62.4
STA 526+16.4 TO STA 435+55.0



OREGON GRID - NORTH ZONE
FACTOR 0.9998374
HORIZONTAL SCALE 1"=200'
VERTICAL SCALE 1"=20'

TOWER DESIGNATION
LOMO MCNY
1-55-5

The conductor curve shown is that used for determining tower locations Datum: USC&GS Cond: ACSR CHUKAR(BUNDLE)-MWT 19,000 at 1/2" ICE	
1 OPER NAME ADDED	Y L N
2 RELOCATED 55/1 BK	20880
3 R/W REMOVED END-25' BUNDLE	20880
4 R/W REMOVED END-25' BUNDLE	20880
5 R/W REMOVED END-25' BUNDLE	20880
6 DAMPERS ADDED	20880
7 PROFILE & TOWERS ADDED	20880
8 REVISION	DATE
9	APPROVED

UNITED STATES DEPARTMENT OF THE INTERIOR BONNEVILLE POWER ADMINISTRATION HEADQUARTERS, PORTLAND, OREGON	
LOWER MONUMENTAL- JOHN DAY NO 1 500 KV TRANSMISSION LINE MILE 55 FROM LOWER MONUMENTAL	
DESIGNER	DATE
ENGINEER	DATE
CHECKED	DATE
APPROVED	DATE
DATE	DATE