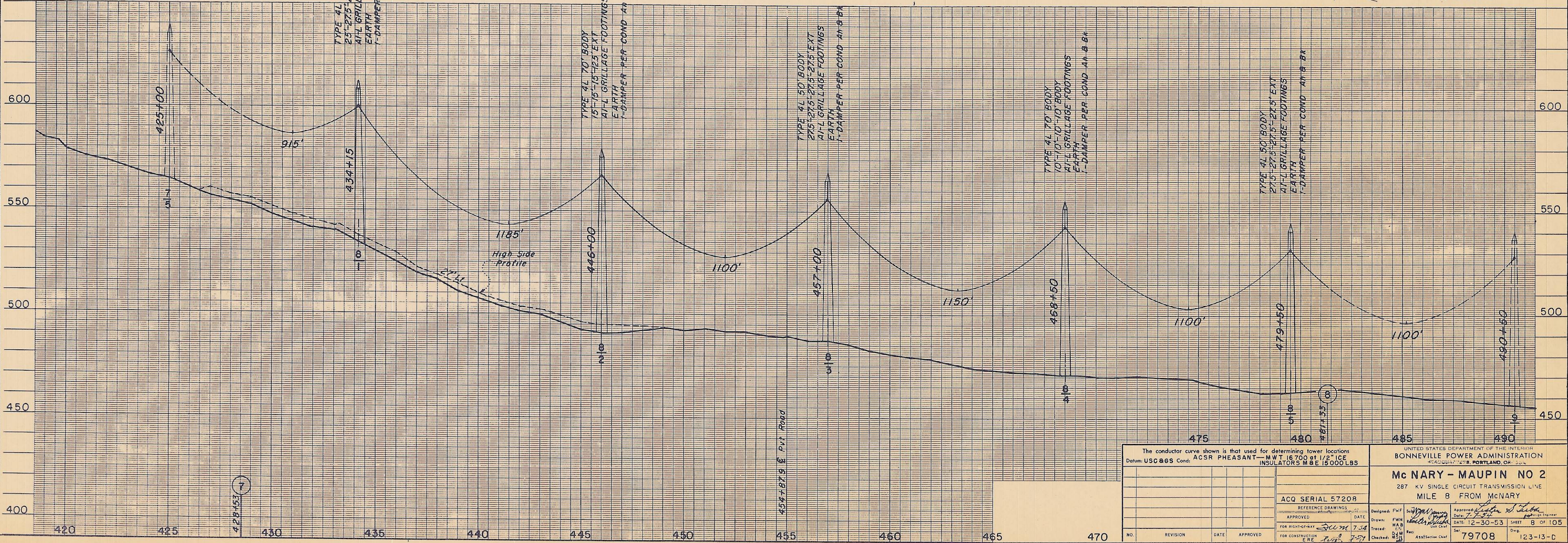
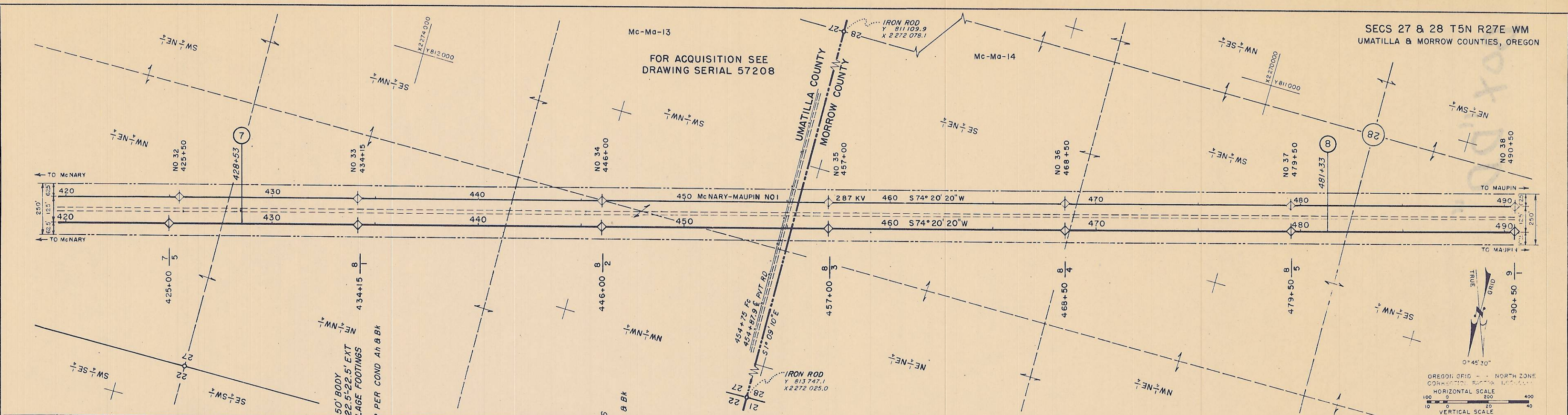


FOR ACQUISITION SEE
DRAWING SERIAL 57208



The conductor curve shown is that used for determining tower locations
Datum: USC 865 Cond: ACSR PHEASANT-MWT 16 700 at 1/2" ICE
INSULATORS MBE 15000 LBS

UNITED STATES DEPARTMENT OF THE INTERIOR
BONNEVILLE POWER ADMINISTRATION
4500 EAST 12TH, PORTLAND, OR 97202

Mc NARY - MAUPIN NO 2
287 KV SINGLE CIRCUIT TRANSMISSION LINE
MILE 8 FROM McNARY

ACQ SERIAL 57208

APPROVED: [Signature] DATE: [Date]
DESIGNED: FWF
DRAWN: H.A.B.
CHECKED: [Signature]
DATE: 12-30-53 SHEET 8 OF 105

NO. REVISION DATE APPROVED

FOR CONSTRUCTION ERE [Signature] 7-54

79708 123-13-D