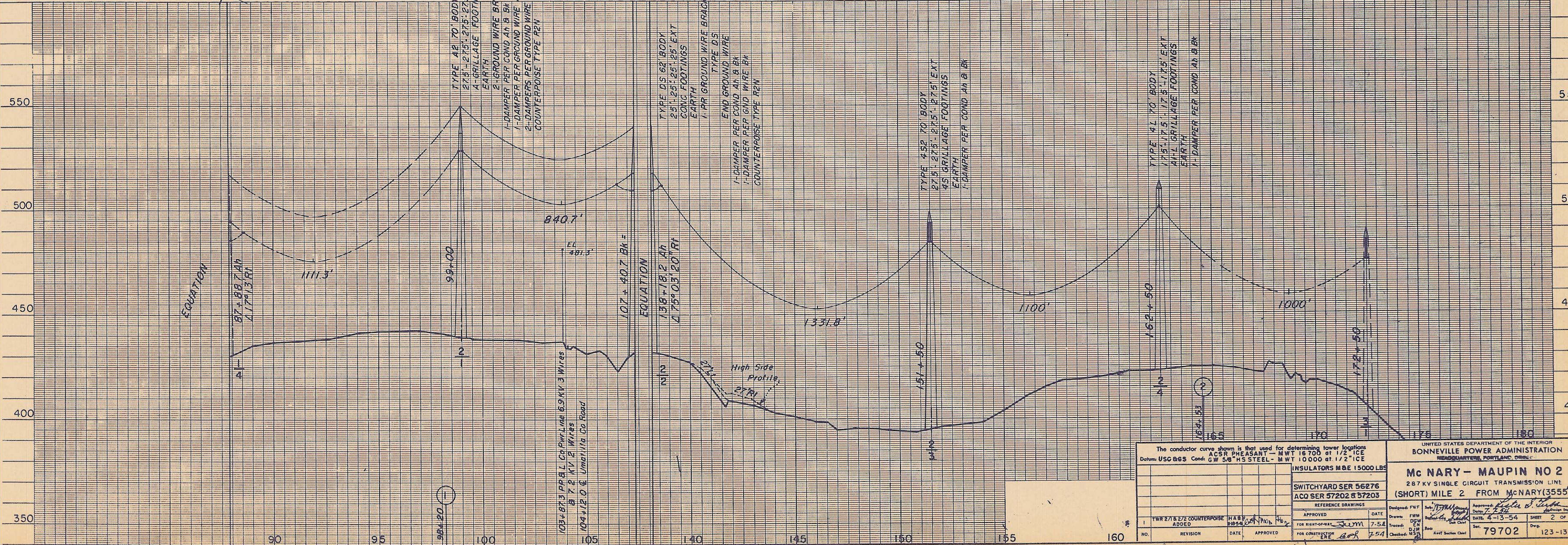
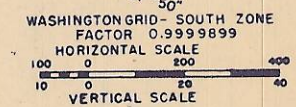
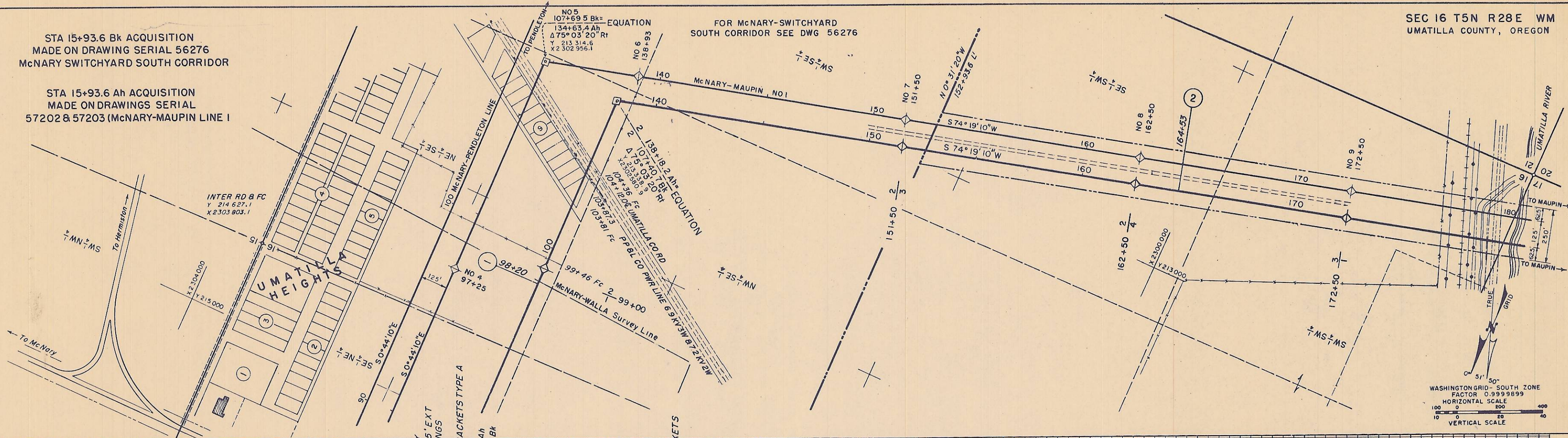


STA 15+93.6 Bk ACQUISITION  
MADE ON DRAWING SERIAL 56276  
McNARY SWITCHYARD SOUTH CORRIDOR

STA 15+93.6 Ah ACQUISITION  
MADE ON DRAWINGS SERIAL  
57202 & 57203 (McNARY-MAUPIN LINE 1)

FOR McNARY-SWITCHYARD  
SOUTH CORRIDOR SEE DWG 56276



EQUATION

87+88.7 Ah  
Δ 179.13 Rt

1111.3'

99+00

840.7'

EL 481.3'

EQUATION

107+40.7 Bk =  
138+18.2 Ah  
Δ 175.03 20 Rt

1331.8'

151+50

1100'

162+50

1000'

172+50

550

500

450

400

The conductor curve shown is that used for determining tower locations ACSR PHEASANT - MWT 16700 at 1/2" ICE Datum: USC 865 Cond: G W 5/8" HS STEEL - MWT 10000 at 1/2" ICE				UNITED STATES DEPARTMENT OF THE INTERIOR BONNEVILLE POWER ADMINISTRATION WINDSHUTTLE, PORTLAND, OREGON			
INSULATORS MBE 15000 LBS				McNARY - MAUPIN NO 2 287 KV SINGLE CIRCUIT TRANSMISSION LINE (SHORT) MILE 2 FROM McNARY(3555')			
SWITCHYARD SER 56276 ACQ SER 57202 & 57203				DATE 7-54			
REFERENCE DRAWINGS				DESIGNED BY F.W.M.			
APPROVED				DRAWN BY F.W.M.			
FOR RIGHT-OF-WAY				CHECKED BY J.M.			
FOR CONSTRUCTION				DATE 4-13-54			
DATE 7-54				SHEET 2 OF 105			
79702				123-13-0			