

COLD SPRINGS

UMATILLA COUNTY
ROADMASTER'S OFFICE.
COLD SPRINGS - HARP'S RANCH.
CONSTRUCTED LINE.

Scale 1 inch = 400 feet.
Dec. 1923.

Cold Springs Holdman 1920 miles
next Harp's Ranch 301 or 302 miles.

Box 16

COLUMBIA RIVER.
Water Edge
0+00 - Beginning of Project

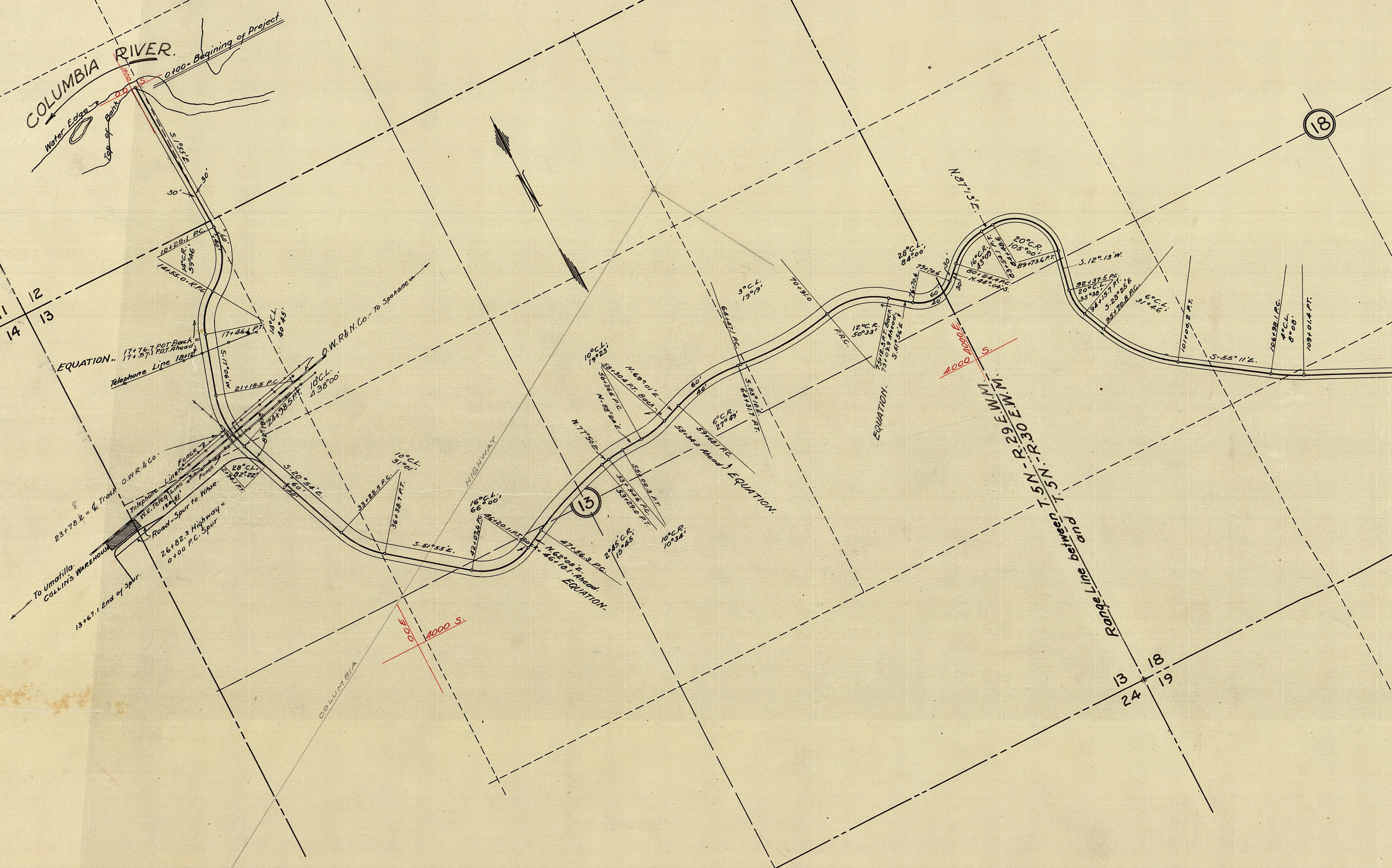
Emil. Tan. & 1000' Sta. on 3F-7-16
Holdman-Harp's detail.
(1923-owners)

11 12
14 13

12 7
13 18

18

13 18
24 19



COLUMBIA

HIGHWAY

Pub. Right of Way Line
N 1/2 Sec 18 T 5 N R 26 E
S 1/2 Sec 18 T 5 N R 26 E