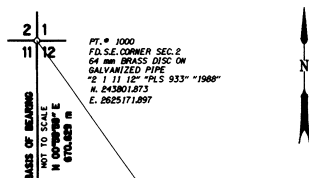


T. 4 N., R. 32 E., E. 1/2 E. 1/2 S. 18, E. W.M.
T. 4 N., R. 31 E., S. 11, 12, 13, E. W.M.



LEGEND	
•	SET 16 mm x 762 mm IRON ROD WITH ALUM. CAP, STATE HIGHWAY RIGHT OF WAY (S.H.R.W.)
×	TRAVERSE POINT
○	FOUND MONUMENT AS NOTED

ADJUSTED COORDINATES			
PT.	NORTHING	EASTING	BEARING
1	242832.996	2625374.765	
2	242460.553	2625642.887	S 35°45'01" E
3	242503.229	2625776.909	N 72°20'14" E
4	242048.317	2626269.845	S 47°17'50" E
5	242180.613	2626008.818	N 63°07'22" W
6	241362.437	2626919.969	S 48°04'39" E
7	241425.654	2626770.533	N 67°04'11" W
8	241189.583	2627258.390	S 64°10'41" E
9	241196.331	2627213.244	N 81°29'56" W
10	240832.481	2627985.219	S 64°45'52" E
11	240857.398	2627887.654	N 75°40'25" W
13	240653.304	2628290.449	S 63°07'54" E
12	240780.369	2628322.791	N 14°15'33" E

RIGHT-OF-WAY POINTS			
STATION	OFFSET	NORTHING	EASTING
30+240	9.144 m RIGHT	240736.899	2628118.249
30+260	14.000 m RIGHT	240723.681	2628134.025
30+300	12.000 m RIGHT	240707.744	2628170.768
30+320	12.000 m RIGHT	240698.880	2628188.696
30+360	14.000 m RIGHT	240679.357	2628223.666
30+400	9.144 m RIGHT	240665.980	2628261.674
30+240	9.144 m LEFT	240753.292	2628126.356
30+260	12.000 m LEFT	240746.988	2628145.550
30+360	12.000 m LEFT	240702.664	2628235.190
30+400	9.144 m LEFT	240682.374	2628269.780

LINE TABLE		
LINE	DISTANCE	BEARING
L1	4245.312 m	S 0°46'06" E
L2	20.203 m	S 71°49'05" E
L3	100.000 m	S 63°41'21" E
L4	40.102 m	S 59°36'17" E
L5	40.293 m	S 70°36'37" E
L6	40.051 m	S 60°49'35" E
L7	20.000 m	S 63°41'28" E
L8	40.050 m	S 66°33'06" E
L9	20.581 m	S 50°02'31" E

REGISTERED PROFESSIONAL LAND SURVEYOR

K.W. Eddy
OREGON
FEBRUARY 14, 1985
KEN W. EDDY
2129

EXPIRES 12/31/01

NARRATIVE

THE PURPOSE OF THIS SURVEY IS TO ESTABLISH HORIZONTAL CONTROL FOR THE REPLACEMENT OF MIDDLE FORK COLD SPRINGS BRIDGE NO. 18308 LOCATED AT 30.14K.M. (MILE POINT 18.73) ON STATE HWY. #36 RIGHT-OF-WAY ACQUIREMENT NECESSARY TO THIS PROJECT WAS DETERMINED FROM THE ORIGINAL ALIGNMENT DATA FOUND IN STATE HWY. DRG. NO. 5B-29-11 AND SURVEY FILE NO. 91-105-C. THE CONTROL POINTS AND SURVEY MEASUREMENTS WERE CONVERTED TO METRIC.

THE SURVEY IS LOCATED IN SECTION 18, T. 4 N., R. 32 E., SECTIONS 11, 12 & 13, T. 4 N., R. 31 E., W.M., UMATILLA COUNTY, OREGON. COORDINATES SHOWN ARE OREGON COORDINATE SYSTEM OF N.A.D. 1983, NORTH ZONE, CONVERTED TO LOCAL DATUM PLANE USING A CONVERSION FACTOR OF 0.9999226. L.D.P. COORDINATES REPRESENT TRUE GROUND DISTANCES. TO RETURN TO OREGON SYSTEM COORDINATES, 1993, CONVERT METRIC INTO US FEET AND MULTIPLY L.D.P. COORDINATES BY THE CONVERSION FACTOR.

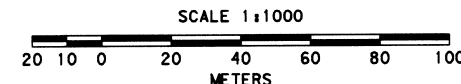
THE BASIS OF BEARING FOR THE SURVEY WAS ESTABLISHED FROM FOUND SECTION CORNER POINT NO. 1000 AND POINT NO. 412, FOUND HUB AND TACK AS ESTABLISHED IN SURVEY NO. 91-105-C FILED BY OREGON DEPARTMENT OF TRANSPORTATION. ALL BEARINGS ARE TRUE

HORIZONTAL CONTROL FOR THE PROJECT WAS DEVELOPED BY ESTABLISHING A NETWORK OF CONTROL POINTS. THE OBSERVATIONS WERE ADJUSTED USING A LEAST SQUARES ADJUSTMENT TECHNIQUE.

A WILD T1610 ELECTRONIC THEODOLITE AND DI1600 DISTOMAT WERE USED TO MAKE THE NETWORK OBSERVATIONS. THE T1610 THEODOLITE HAS A STANDARD ANGULAR ERROR OF +/- 1.5 SECONDS AND THE DI1600 HAS A STANDARD DISTANCE ERROR OF +/- 2 PPM.

CHANGES IN DIRECTION OF RIGHT-OF-WAY AND CONTROL POINT REFERENCES WERE MONUMENTED USING CAPPED 16 mm x 762 mm IRON RODS WITH A POST AND PLACARD STAMPED WITH HIGHWAY STATION AND DISTANCE FROM CENTERLINE.

RECORD WIDTHS HELD UNLESS OTHERWISE NOTED. FIELD NOTES FOR THIS SURVEY ARE ON FILE IN BOOK NO. 2979 LOCATED IN THE OREGON DEPARTMENT OF TRANSPORTATION OFFICE IN SALEM, OREGON.



TO CONVERT METERS TO FEET DIVIDE BY 0.3048

OREGON DEPARTMENT OF TRANSPORTATION

RIGHT-OF-WAY MONUMENTATION MAP

MIDDLE FORK COLD SPRINGS BRIDGE

PENDLETON-COLD SPRINGS HWY.

UMATILLA COUNTY

FOR O.D.O.T. REGION 5 80788 KIK RD., HERMISTON, OR 97838

OCTOBER 8, 1999

SHEET 1 OF 1

RECEIVED BY
Checked for accuracy
01-2000
JK
No. 05-007-B