

INDEX OF SHEETS	
SHEET NO.	DESCRIPTION
1	TITLE SHEET
2-9	SURVEY FILING PLAN SHEETS

STATE OF OREGON

DEPARTMENT OF TRANSPORTATION

STATE HIGHWAY DIVISION

PLANS FOR PROPOSED PROJECT

SURVEY FILING

BRIDGE ROAD - OLD OREGON TRAIL HWY SEC.

McNARY HIGHWAY
UMATILLA COUNTY
OCTOBER, 1990

BRIDGE ROAD-OLD OREGON TRAIL HWY SECTION McNary Hwy (I-82) Umatilla County				SHEET No. 1
FED. ROAD Div. No.	STATE	PROJECT NUMBER	FISCAL YEAR	TOTAL SHEETS
10	OREGON			See Index

- R/W SET 5/8" IRON ROD WITH ALUMINUM CAP
- ⊙ SET BRASS DISC 65' LT. OF "SB" CENTER LINE
- TIE POINT
- HU'S IRON ROD WITH ALUMINUM CAP
- ⊠ HUB AND TACK
- ▲ FOUND MONUMENT-AS NOTED

LEGEND
FOR MONUMENTS SET, SEE FIELD
BOOK # 3043 on FILE AT:
TRANSPORTATION BLDG.
SALEM, OR 97810

1927 GRID BEARINGS-NORTH ZONE

NOTE: COORDINATES USED ON THIS MAP ARE ON A LOCAL DATUM PLANE WHICH REPRESENTS TRUE GROUND DISTANCES. TO CONVERT LDP COORDINATES TO OREGON STATE GRID NORTH ZONE, MULTIPLY LDP COORDINATES BY 0.9999228

Survey Narrative

This survey was conducted in the following: Sections 13, 24, 25 & 26, T. 4N., R. 2 E. W. M. All of the preceding referred to drawings No. 1A-18-15 and 9B-18-15. Right of Way (R/W) and Monumentation was established from Southbound ("SB") 537+43.34 through I-84 Interchange. The purpose of this survey was to monument property acquired for R/W on the Interstate-82, McNary Highway and to reference Construction Center Lines as follows: Northbound (NB), Northbound from Westbound (NB-WB), Northbound from Eastbound (NB-EB), Southbound to Westbound I-84 (SB-WB), Frontage Road South (FRS), and Depot Entrance (DE).

History:

In December 1973, the "J" corridor was selected as the Interstate-82 and Defense Highway System connecting the Columbia River Bridge, near the City of Umatilla, to the existing Interstate-84 approximately 1.8 miles East of the Ordinance Interchange, all of which would be new construction. This survey encompassed the third contract letting of the new construction referred to as Unit 3, Northbound and Southbound Lines.

Procedure:

Oregon Grid Bearing and Local Datum Plane Coordinates were established on the project from controlled monuments established by a 1974 photogrammetry ground control survey referred to as the HU line consisting of 5/8 inch iron rods and aluminum cap stamped HU and sequential traverse point numbers. The HU line coordinates were established by an independent traverse tied to the following N. G. S. triangulation stations, STANFIELD EAST BASE, HERMISTON, VACA and TRANS.

From this basis of bearing and predetermined coordinates a control traverse was then run beginning at HU-8 through HU-9 and the preset traverse points to HU-3 and HU-4 closed and adjusted by the Compass Rule Method closure ratio being 1:32000. Tie points No. 3, No. 4, and No. 5 were set and closed for the purpose of intervisibility and check ties. All R/W was established from closed traverse points by inverting designated coordinates of said point. All R/W was then established from closed traverse points by inverting designated coordinates of said point and setting a 5/8 inch x 30 inch iron rod and aluminum cap inscribed with OREG. STATE HWY. DIV. and center punch. R/W was set at changes of R/W width, opposite curve points and at intervals of 1000 ft. A 7 ft. steel post with a descriptive panel attached was also set near each R/W point.

"SB" construction center line (STA 37+43.34 PT to 610+00.00 P.O.T.) was monumented at 65 ft. LT. and references from 610+00.00 ahead were set at 27' RT or 27' LT of centerline control points as indicated on the attached sheets. No monuments were set at R/W within the Umatilla Army Depot easement approximately stations 529+50.00 to 614+78.00 by placing a brass disc in concrete with steel post and descriptive panel labeled S.H.R.P. and station. These points also served as traverse points therefore when the traverse was adjusted the error was distributed at each point. These should be referenced to "SB" center line by coordinates only.

Sixteenth and quarter section corners were tied to "SB" center line brass monuments from two points or traversed through and closed.

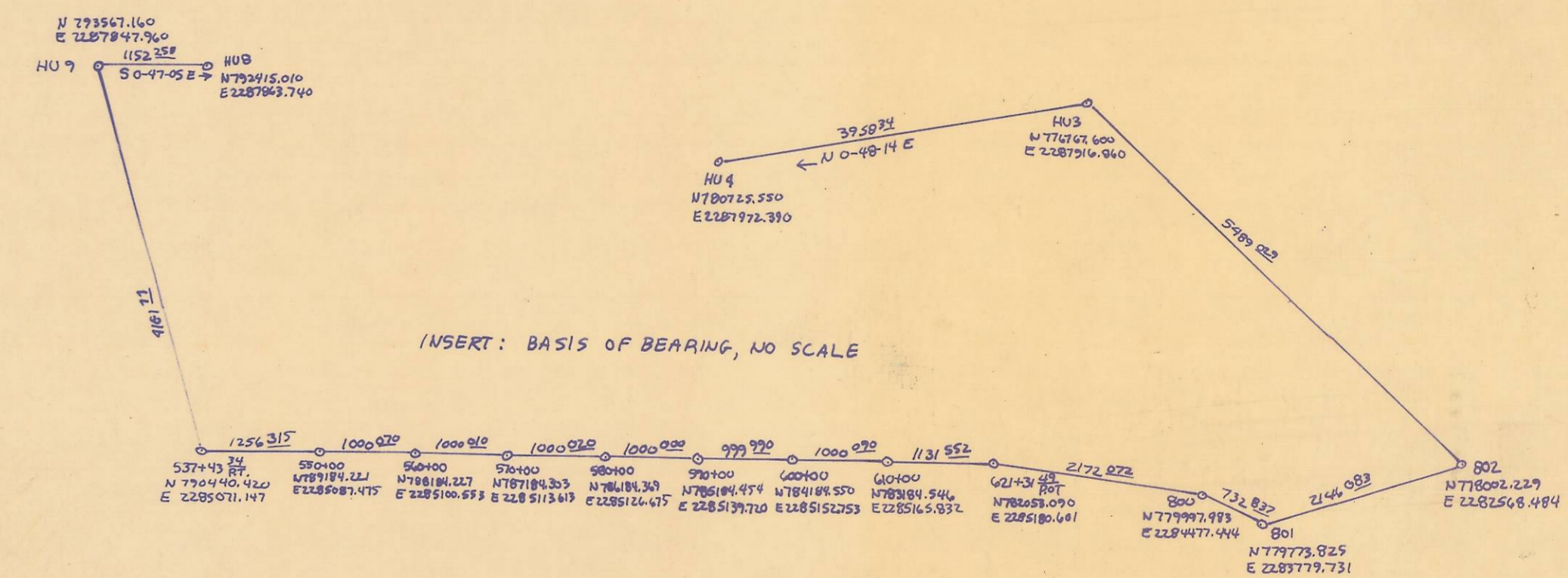
This survey was accomplished by a two and three man crew using a Wild D13S infra-red E.P.M. and T16 one minute theodolite. The E.P.M. was checked for atmospheric and temperature correction on N.O.S. calibrated baseline, designated: Hermiston, located near Frontage Road, south of I-84, 3.9 miles West of the Ordinance Depot Interchange. The average temperature range during this survey was 30 to 50 degrees and overcast. All the preceding information is referenced to transit notes.

SEC 13 24 25 26 36

T. 4 N. R 27 E.W.M.

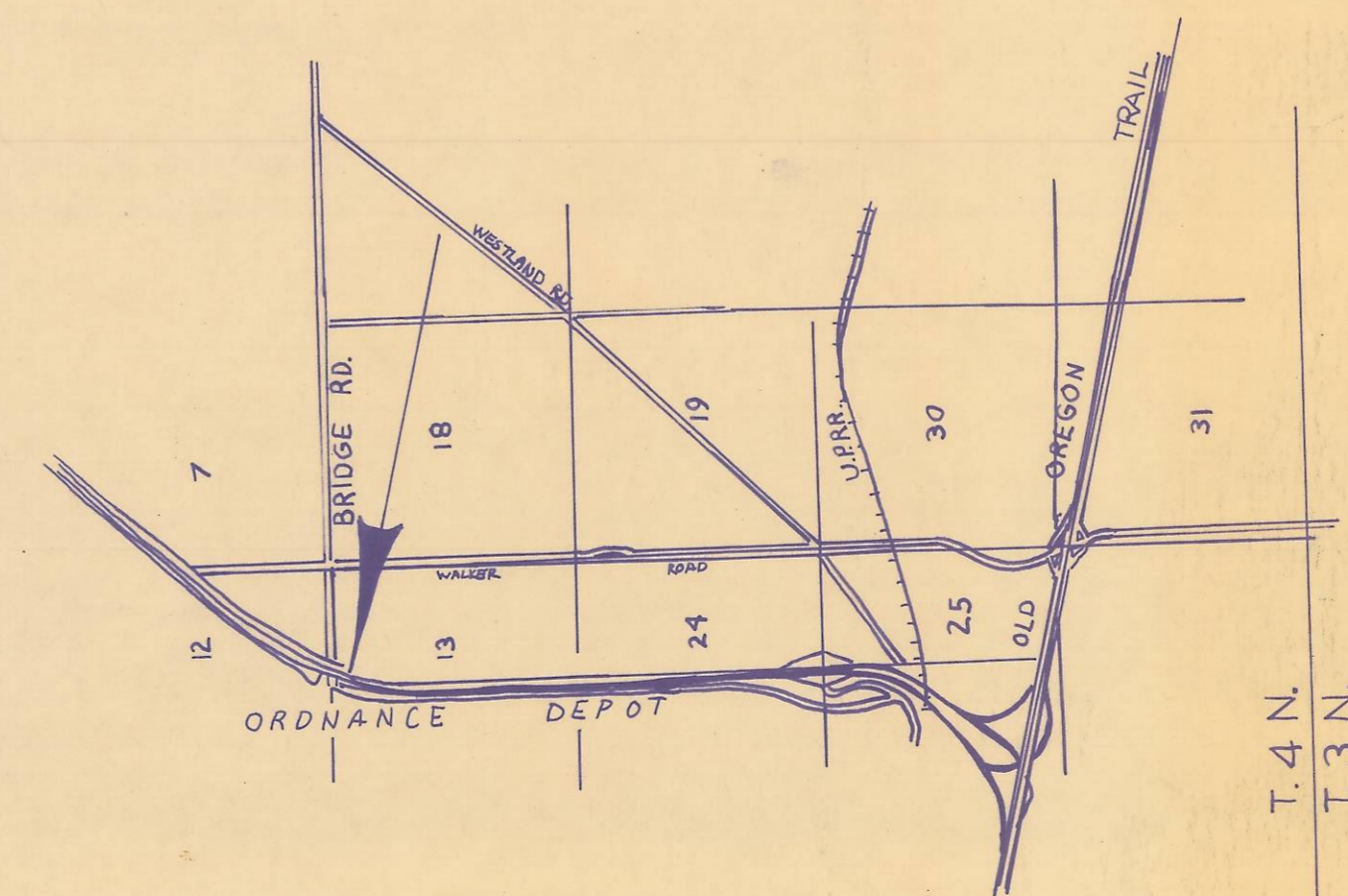
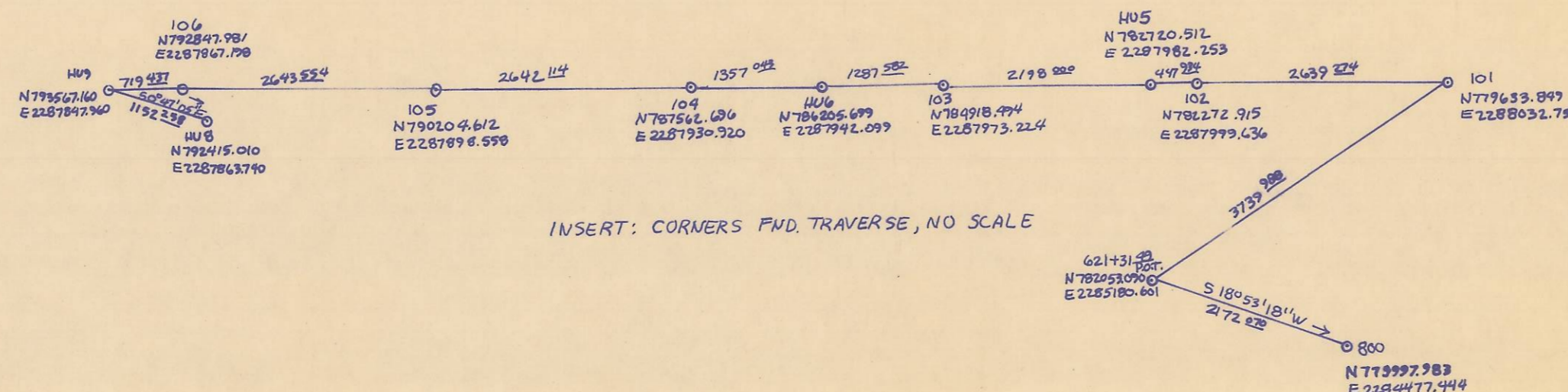
SEC 19 30

T. 4 N. R 28 E.W.M.



LEGEND

- ⊙ 101: T. 4N., R 28 E.W.M. 1/4 Cor. 3" Brass Disc Stamped 1941 Filing Map
- ⊙ 102: C-20-B And I-161 C Condition Good FND 10-90
- ⊙ 103: T. 4N., R 28 E.W.M. & R 27 E.W.M. Section Corner 3" Brass Disc Stamped RLS 933 1988, W.C. 62 1/2 West. Filing Map # F-7 And C-20-B Condition Good FND 10-90
- ⊙ 104: T. 4N., R 27 E.W.M. & R 28 E.W.M. 1/4 Section. 3" Brass disc, W.C. 40 Links West
- ⊙ 105: Filing Map # F-7 and C-20-B Condition Good FND 10-90
- ⊙ 106: T. 4N., R 27 E.W.M. & T. 4N. R-28 E.W.M. Section Corner 1" Iron pipe. W.C. 25 Links West, U.S. General Land Survey. Filing Map # C-20-B, F-7, and H-142-P. Condition Good

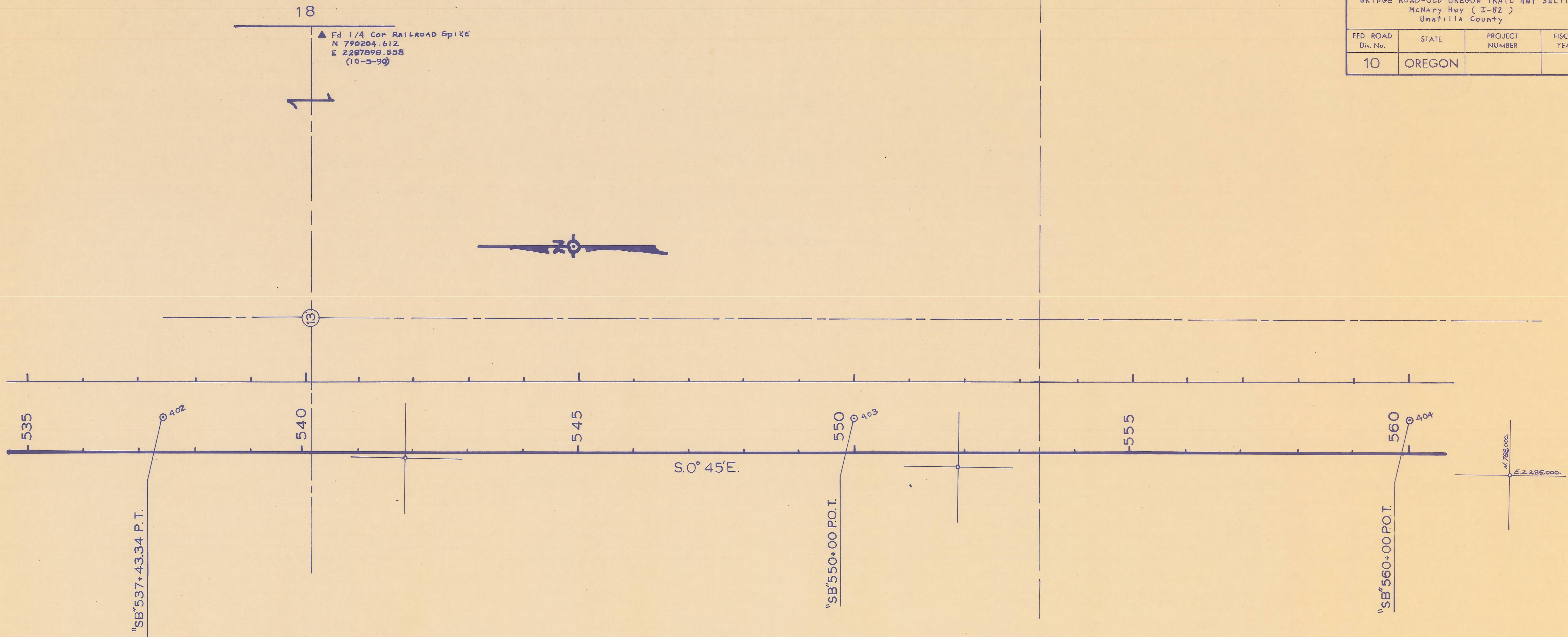


I-85

BOX 14

SEC. 13 T. 4 N. R. 27 E. W.M.

BRIDGE ROAD-OLD OREGON TRAIL HWY SECTION McNary Hwy (I-82) Umatilla County				SHEET No. 2
FED. ROAD Div. No.	STATE	PROJECT NUMBER	FISCAL YEAR	TOTAL SHEETS
10	OREGON			See Index



18

▲ Fd 1/4 Cor Railroad Spike
N 790204.612
E 2287898.558
(10-5-99)

1

70

13

535

"SB" 537+43.34 P.T.

402

540

545

S. 0° 45' E.

550

"SB" 550+00 P.O.T.

403

555

560

"SB" 560+00 P.O.T.

404

N. 788.000

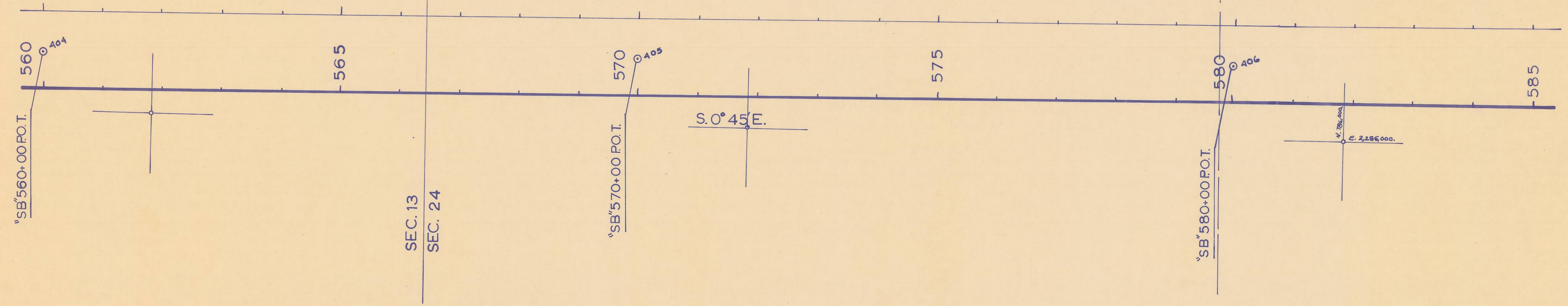
E. 2,285,000.

POINT No.	NORTHING	EASTING	BEARING	DISTANCE
8	792415.010	2287863.740	N 00-47-05 W	1152.26
9	793567.160	2287847.960	S 41-36-28 W	4181.77
402	790440.420	2288071.147	S 00-44-41 E	1256.32
403	789184.211	2288087.475	S 00-44-57 E	1000.07
404	788184.227	2285100.553		

18 19
13 24

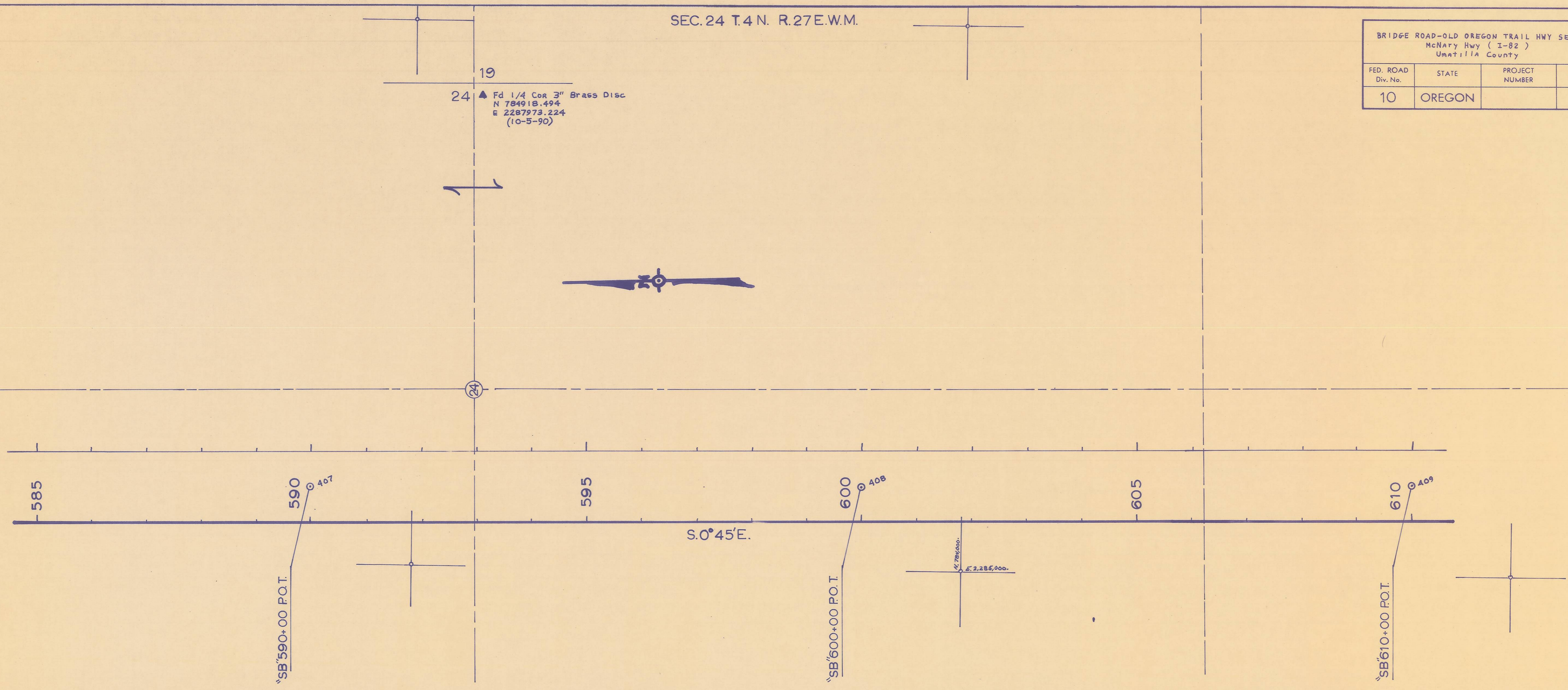
▲ Fd SEC COR 1" IRON PIPE
N 787562.696
E 2287930.920
(10-5-90)

BRIDGE ROAD-OLD OREGON TRAIL HWY SECTION McNary Hwy (I-82) Umatilla County				SHEET No. 3
FED. ROAD Div. No.	STATE	PROJECT NUMBER	FISCAL YEAR	TOTAL SHEETS
10	OREGON			See Index



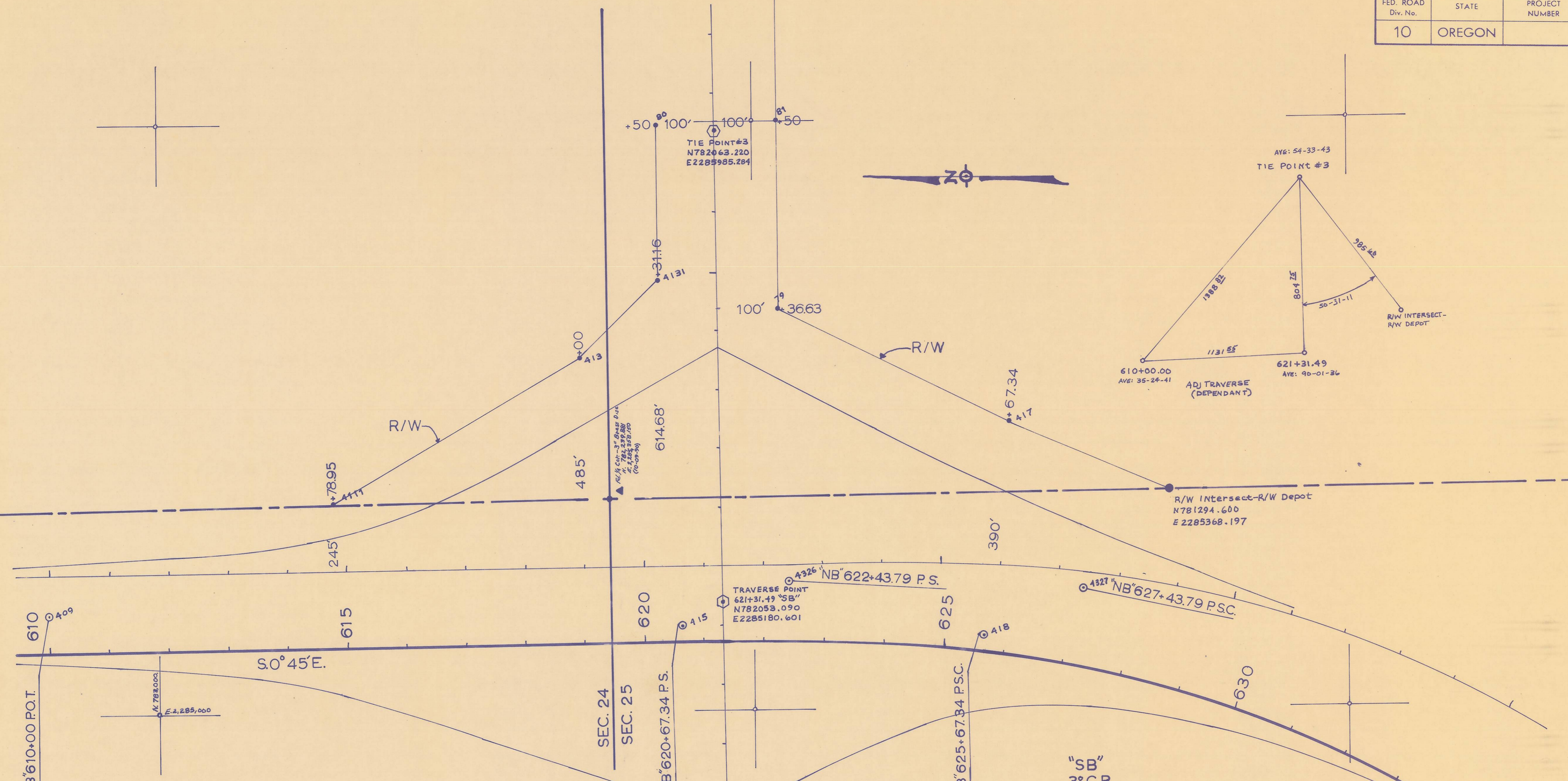
POINT No.	NORTHING	EASTING	BEARING	DISTANCE
404	788184.227	2285100.553	S 0-44-54 E	1000.01
405	787184.303	2285113.613	S 0-44-54 E	1000.02
406	786184.369	2285126.675	S 0-44-51 E	1000.00
407	785184.454	2285139.720		

BRIDGE ROAD-OLD OREGON TRAIL HWY SECTION McNary Hwy (I-82) Umatilla County				SHEET No. 4
FED. ROAD Div. No.	STATE	PROJECT NUMBER	FISCAL YEAR	TOTAL SHEETS
10	OREGON			See Index



POINT No.	NORTHING	EASTING	BEARING	DISTANCE
407	785184.454	2285139.720	S 00-44-48 E	999.99
408	784184.550	2285152.753	S 00-44-58 E	1000.09
409	783184.546	2285165.832		

BRIDGE ROAD-OLD OREGON TRAIL HWY SECTION McNary Hwy (I-82) Umatilla County				SHEET No. 5
FED. ROAD Div. No.	STATE	PROJECT NUMBER	FISCAL YEAR	TOTAL SHEETS
10	OREGON			See Index



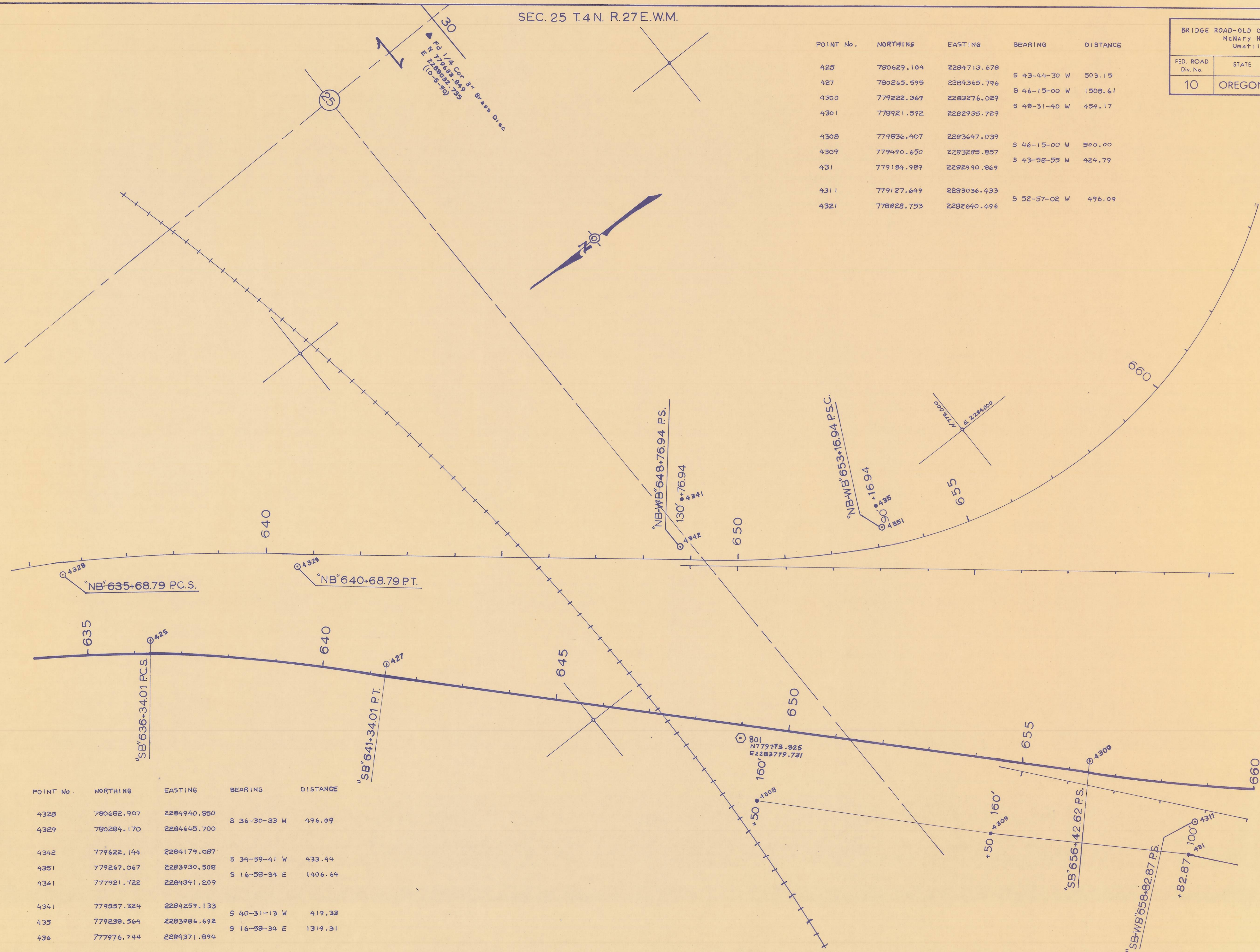
POINT No.	NORTHING	EASTING	BEARING	DISTANCE
409	783184.546	2285165.832		
415	782116.689	2285142.025	S 01-16-38 W	1068.12
418	781613.777	2285126.585	S 01-45-31 W	503.15
425	780629.104	2284713.678	S 22-45-00 W	1067.74
4111	782707.883	2285352.304	S 30-26-00 E	484.65
413	782290.010	2285597.795	S 45-20-48 E	184.70
4131	782160.198	2285729.187	N 89-17-01 E	263.54
80	782163.494	2285992.708		
81	781963.509	2285995.210	S 89-05-14 W	313.37
79	781958.517	2285681.876	S 26-41-44 W	433.63
417	781571.110	2285487.069		
4326	781941.251	2285220.326	S 01-44-27 W	496.09
4327	781445.392	2285205.256	S 19-07-30 W	807.03
4328	780682.907	2284940.850		

"SB"
3° C.R.
± 47° 00'
± 1082.66'
2-500'sp
S 7° 30'
a=0.6
e 0.08'/ft.

SEC. 25 T.4 N. R. 27 E. W.M.

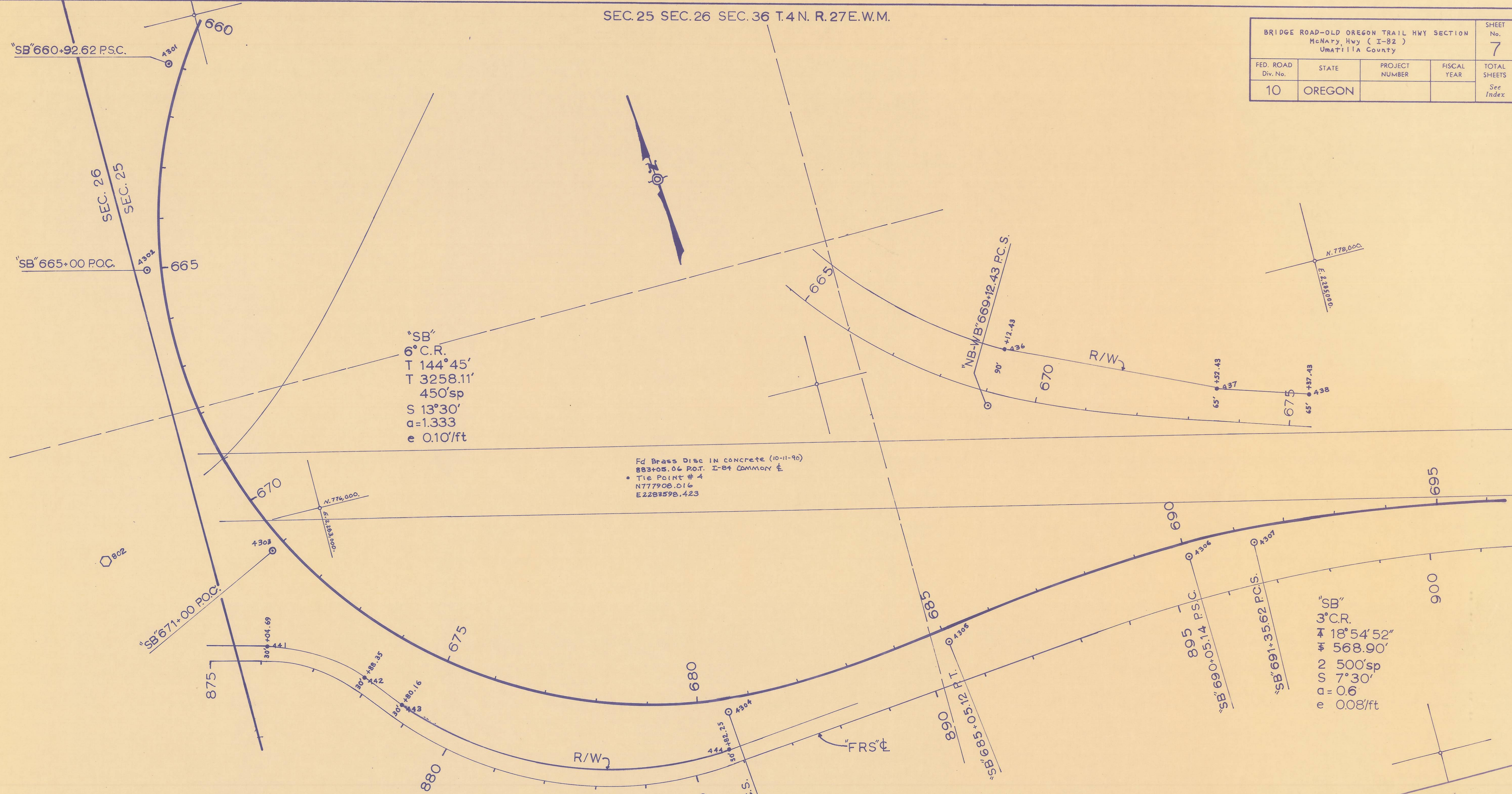
BRIDGE ROAD-OLD OREGON TRAIL HWY SECTION McNary Hwy (I-82) Umatilla County				SHEET No. 6
FED. ROAD Div. No.	STATE	PROJECT NUMBER	FISCAL YEAR	TOTAL SHEETS
10	OREGON			See Index

POINT No.	NORTHING	EASTING	BEARING	DISTANCE
425	780629.104	2284713.678	S 43-44-30 W	503.15
427	780265.595	2284365.796	S 46-15-00 W	1508.61
4300	779222.369	2283276.029	S 48-31-40 W	454.17
4301	778921.592	2282935.729		
4308	779836.407	2283647.039	S 46-15-00 W	500.00
4309	779490.650	2283285.857	S 43-58-55 W	424.79
431	779184.989	2282990.869		
4311	779127.649	2283036.433	S 52-57-02 W	496.09
4321	778828.753	2282640.496		



POINT No.	NORTHING	EASTING	BEARING	DISTANCE
4328	780682.907	2284940.850	S 36-30-33 W	496.09
4329	780284.170	2284645.700		
4342	779622.144	2284179.087	S 34-59-41 W	433.44
4351	779247.067	2283930.508	S 16-58-34 E	1406.64
4361	777921.722	2284341.209		
4341	779857.324	2284259.133	S 40-31-13 W	419.32
435	779238.564	2283986.692	S 16-58-34 E	1319.31
436	777976.744	2284371.894		

BRIDGE ROAD-OLD OREGON TRAIL HWY SECTION McNARY Hwy (I-82) UMATILLA County				SHEET No. 7
FED. ROAD Div. No.	STATE	PROJECT NUMBER	FISCAL YEAR	TOTAL SHEETS
10	OREGON			See Index



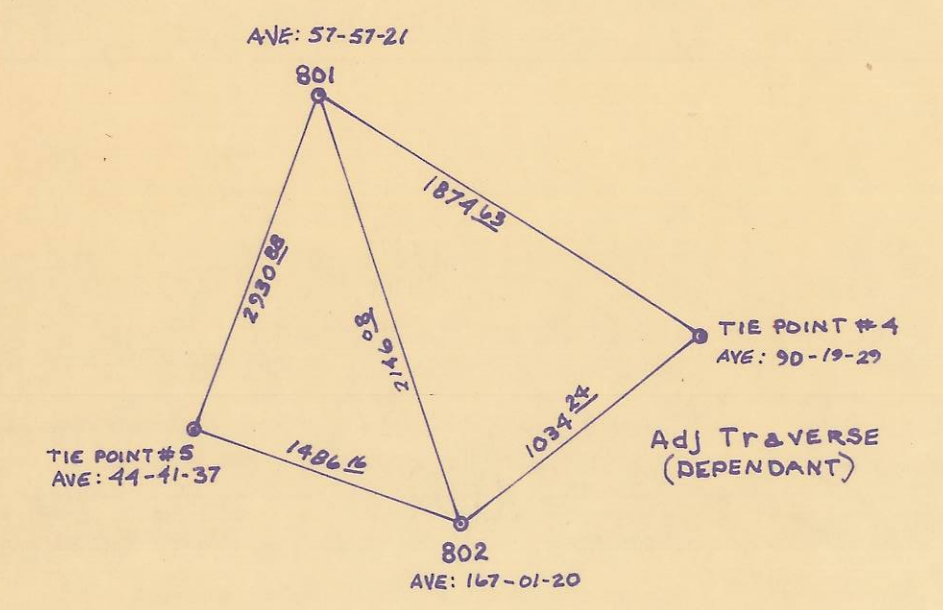
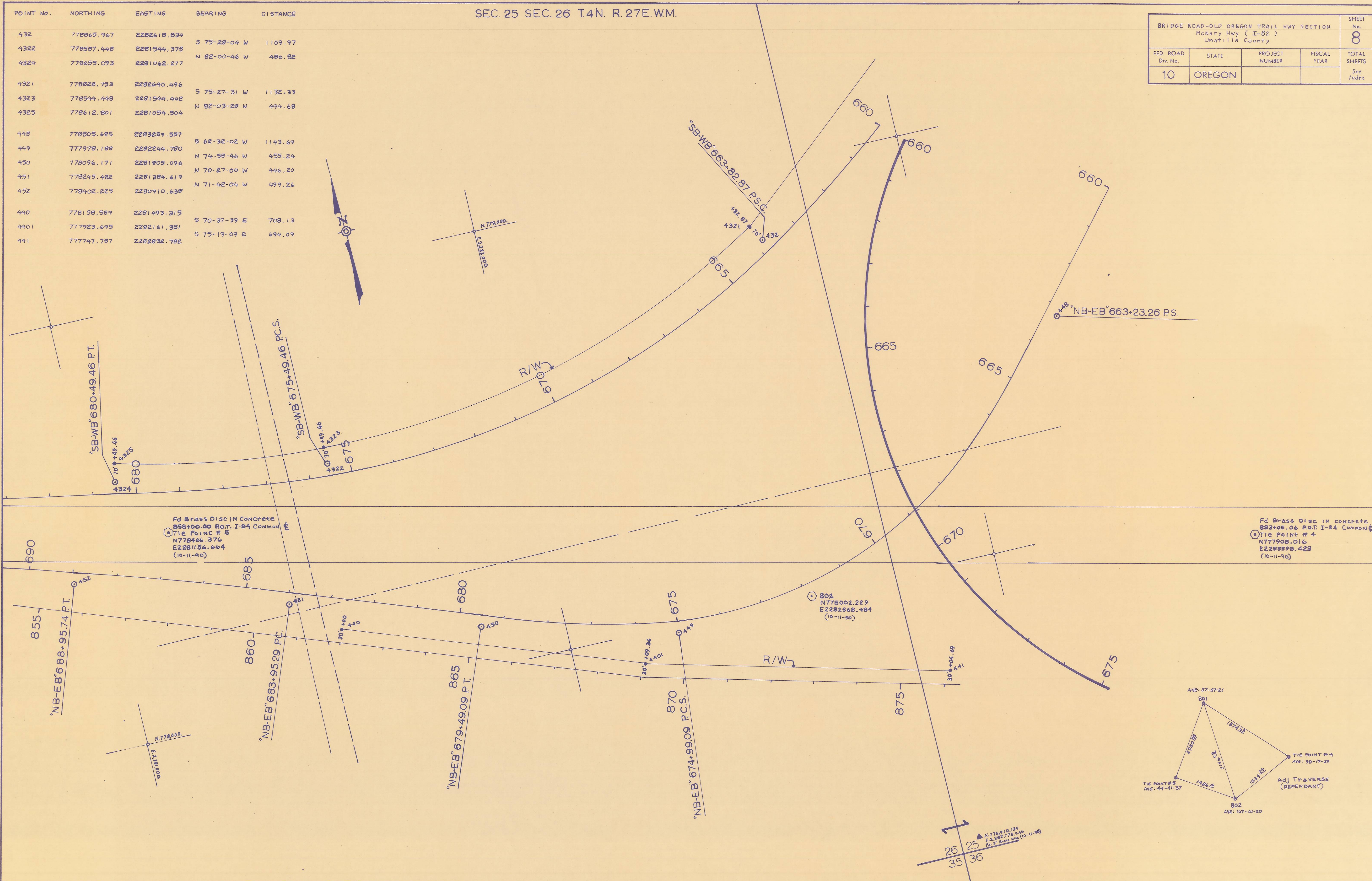
POINT No.	NORTHING	EASTING	BEARING	DISTANCE
4301	778921.592	2282935.729	S 20-31-43 W	415.73
4302	778532.263	2282789.943	S 07-41-34 E	606.87
4303	777934.060	2282892.119	S 56-20-47 E	941.70
4304	777412.201	2283675.990	N 86-01-46 E	455.23
4305	777443.724	2284130.130	N 83-59-26 E	496.10
4306	777495.662	2284623.512	S 89-02-35 E	128.61
4307	777493.514	2284752.105		
436	777976.744	2284371.894	S 65-37-42 E	422.62
437	777802.346	2284756.857	S 72-57-08 E	185.01
438	777748.107	2284933.737		

POINT No.	NORTHING	EASTING	BEARING	DISTANCE
441	777747.787	2282832.782	S 57-46-50 E	198.89
442	777641.744	2283001.048	S 40-14-29 E	91.81
443	777571.663	2283060.358	S 68-19-31 E	646.07
444	777333.047	2283660.745		
802	778002.229	2282568.484	S 77-00-05 E	5489.03
3	776767.600	2287916.860	S 00-45-00 E	3958.34
4	780725.550	2287972.390		

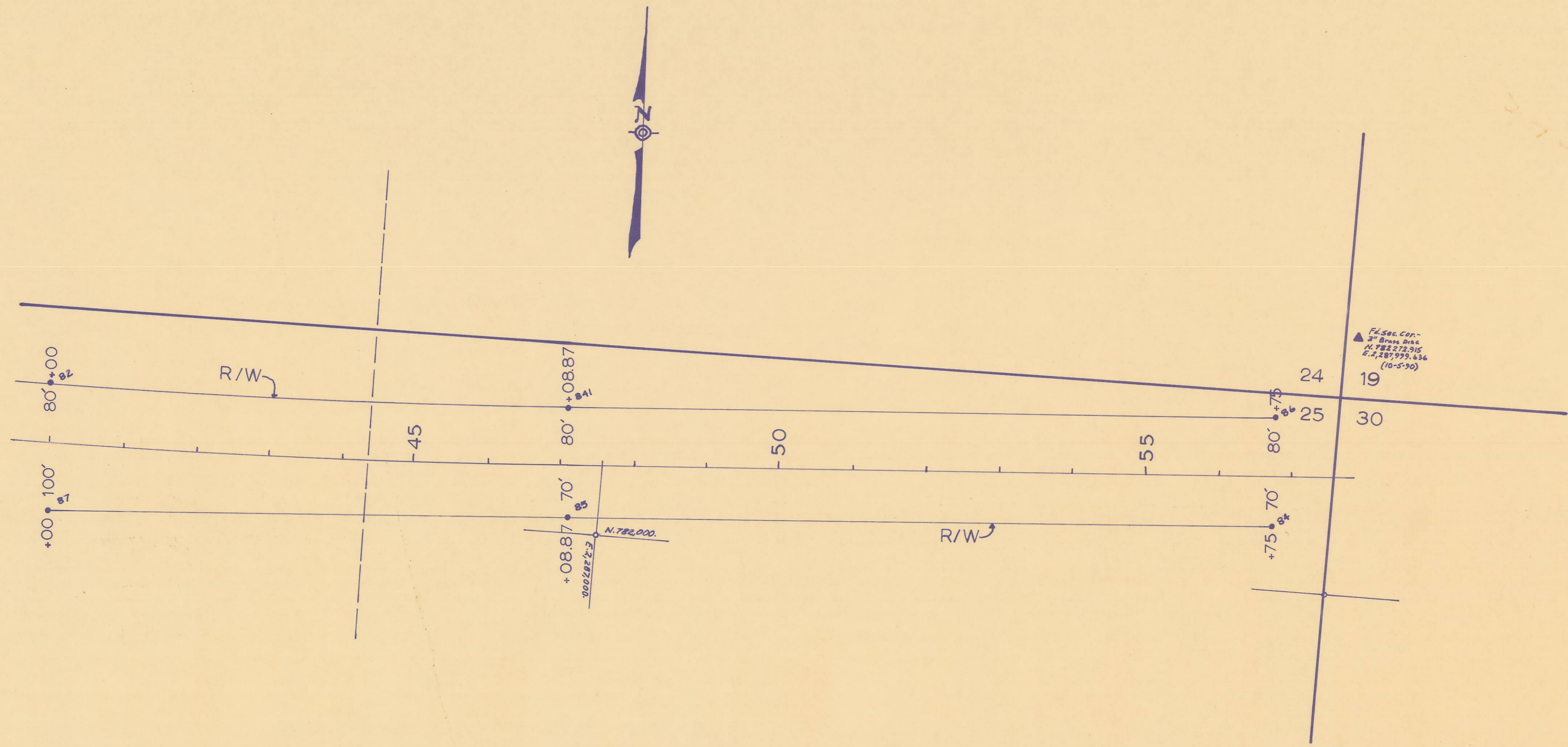
SEC. 25 SEC. 26 T.4N. R. 27E.W.M.

BRIDGE ROAD-OLD OREGON TRAIL HWY SECTION				SHEET No. 8
McNary Hwy (I-82) Umatilla County				
FED. ROAD Div. No.	STATE	PROJECT NUMBER	FISCAL YEAR	TOTAL SHEETS
10	OREGON			See Index

POINT No.	NORTHING	EASTING	BEARING	DISTANCE
432	778865.967	2282618.834		
4322	778587.448	2281544.378	S 75-28-04 W	1109.97
4324	778655.093	2281062.277	N 82-00-46 W	486.82
4321	778828.753	2282640.496		
4323	778544.448	2281544.442	S 75-27-31 W	1132.33
4325	778612.801	2281054.504	N 82-03-28 W	494.68
448	778505.685	2283259.557	S 62-32-02 W	1143.69
449	777978.188	2282244.780	N 74-58-46 W	455.24
450	778096.171	2281905.096	N 70-27-00 W	446.20
451	778245.482	2281384.619	N 71-42-04 W	499.26
452	778402.225	2280910.638		
440	778158.589	2281493.315	S 70-37-39 E	708.13
4401	777923.695	2282161.351	S 75-19-09 E	694.09
441	777747.787	2282832.782		



BRIDGE ROAD-OLD OREGON TRAIL HWY SECTION				SHEET No.
McNary Hwy (I-82)				9
Umatilla County				
FED. ROAD Div. No.	STATE	PROJECT NUMBER	FISCAL YEAR	TOTAL SHEETS
10	OREGON			See Index



POINT No.	NORTHING	EASTING	BEARING	DISTANCE
82	782146.623	2286242.938		
841	782171.967	2286946.918	N 87-56-17 E	704.44
86	782236.101	2287910.937	N 86-11-38 E	966.15
84	781966.634	2286245.190		
85	782022.299	2286956.893	N 85-31-41 E	713.88
87	782086.431	2287920.894	N 86-11 38 E	966.13

10-20-90
 11-11-90
 12-11-90
 13-11-90
 14-11-90
 15-11-90
 16-11-90
 17-11-90
 18-11-90
 19-11-90
 20-11-90