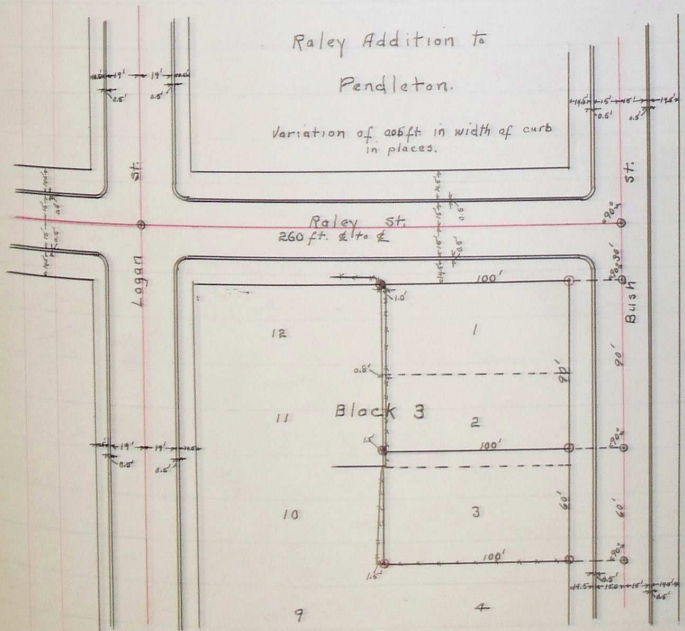


Survey for Mr. Cadward & Mr. Mueller

Lots - 1-2-3 of Block 3 of Raley's Add. to Pendleton.

Starting at intersection of Raley and Bush sts. (E) I run towards the river along the E of Bush St. 30 ft. and mark Point No. 1. Then I continue along said line 90 ft. from said point No. 1 and mark point No. 2 and continuing 60 ft. more mark point No. 3. I then set the instrument over point No. 1 - sight along E of Bush St. and turn a 90° angle and run in a westerly direction 15.5 ft. to back of curb and 14.5 ft. from back of curb to stake with tack in top for Cor. to Lot 1 of Block 3 - Raley Add. Thence continue said line 100 ft. and drive stake with tack in top, for Cor. to Lots 1 + 12 - Raley Add. Block 3. Fence l'E. of stake. Then I set Inst. over pt. No. 2 - sight along E of Bush St. turned 90° angle to right and run in a westerly direction 30 ft. Set stake - tack in top, - for cor. of ^{10' North} ~~lots~~ of true cor. to lots - 2-3 of Block 3. thence continue along line 100 ft. and set stake for Cor. 18' N. of cor. of lots 2-3 - 10-11 Block 3. Then I set up transit over pt. No. 3 - turn 90° angle from E of Bush St. - 30 ft. set stake for cor. of lots - 3-4 - thence 100' on said line set stake for cor. of lots 3-4 - 9-10 of Block 3. Established intersection of Logan + Raley St. from back of curbs. Measured along Raley St. from E of Logan to E of Bush St. Distance 260 ft.



W.L. Perry - Asst.

Quincy E. Perry
County Surveyor.

1/22/1919