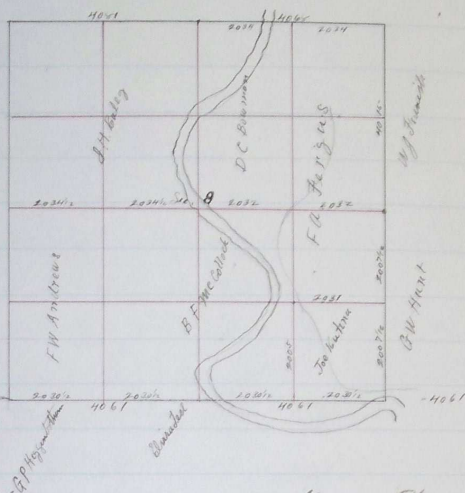


PLAT AND RECORD OF SURVEY No. 218

by request of F. A. Sigus March 6th 1905

Course. Degrees. Minutes. Chains. Links.

T 3 N 62 29 E No. 8



Attended by Jerry Burnhart and John Hoops as Chainmen
and J. W. Johnson as Flyman

Commencing at the corner to ties 4-5-8 and 9

Which is a Stone 8 x 7 x 6 inches set by J. C. Merrill Surveyor
in August 1887 as per field notes of that date

I take up this stone and deposit a piece of Stone 4 x 4 x 3
inches 30 inches deep under stone. Set stone at same point - over deposits
of Stone 6 x 6 x 6 inches marked each with 5 notches on South and 4 notches on
East edges. and deposit Stone N.E. - S.E. - S.W. and N.W.
from corner 24 inches below surface 4 1/2 ft dist from
Corner. point -

Survey made by Swaley's Light Mountain Blue Transit
With 2 double Verniers reading to 1' of arc.

I set up Transit over Corner to ties 4-5-8 and 9 53 x 625.6
and at 1 h 10 m I m S I set off 5° 46' 10" on Sec arc 45° 47' 14" on
lat arc and observe to mean back to be 20° 5' allowing for refraction 1 1/2"

Then I run

1879.09' more hands on line bet ties 5 and 8

True 20° 5'

20 00 ft Comp 4/6 cor

Degree. Minutes. Chains. Links.

- 25 41 East bank of Urnatillu river 693 lbs nails to west bank
- 40 68 The $\frac{1}{4}$ Sec cor set and witnessed by J C Arnold County Surveyor 1887
and witnessed as follows 1st marked lot from which
a beam 24 inches diam bears N 49° 30' E 46 lbs dist
" " " " " N 34° W 147 " "
Thence west
- 40 81 The cor to Sec 5-6-7 and 8 in broad course N & S as set by P
Gahner 1885-
Specimen to my traps $\frac{1}{4}$ $\frac{1}{4}$ cor on N. Body No 4 Sec 5 and
More or West 34 lbs and 1st Stone marked with deposits of Stone coal
24 inches deep under cor. also deposits Stone coal E & W of cor
24 inches deep 4 feet dist from cor
From the cor to Secs 4-5-8 & 9 I run
South lot Secs 8 & 9
- 40 12 The $\frac{1}{4}$ Sec cor established by myself on January 31st 1905-
from lines run N & S for this purpose.
at this point I set Cedar post. Marked $\frac{1}{4}$ on E face with Stone coal
deposited 30 inches in the ground under post 44 5 13 inches also deposits
Stone coal 30 inches under surface N & S from cor 4 ft dist
Thence I run South lot Secs 8 & 9
- 20 06 Stone set by myself for $\frac{1}{4}$ $\frac{1}{4}$ cor January 31st 1905-
- 38 87 1st trap witness cor for Secs 8-9-16 & 17 finding my distance
to correspond with my measurements previously made in June
I do not extend my line South lot Secs 16 & 17
From the $\frac{1}{4}$ Sec cor lot Secs 9 and 16 I run
N 88° W on random line lot Secs 9 & 16
- 40 60 The trap stake set at this point originally set for witness cor
Thence S 84° W lot Secs 8 & 17
- 20 10 N trap $\frac{1}{4}$ cor
- 33 18 Urnatillu river 659 lbs across
- 39 59 West bank at flag
- 40 02 1st trap $\frac{1}{4}$ Sec cor

Course.	Degrees. Minutes.	Chains.	Links.
---------	-------------------	---------	--------

- 60 00 Set Irons $\frac{1}{16}$ cor
- 5 2 22 a point 40 lbs south of the cor to seas 7-8-17 and 18
Which is a Stone set by P. Zahner in 1885-
Place 1 run East on true line bet seas 8 & 17
- 20 30 $\frac{1}{2}$ set old gun barrel 30 inch long 26 inch in the ground and deposits
long neck bottles to NW 20 inch deep 4 ft dist from cor
- 60 91 set Rail head 1 run full pile 24 inch long 20 inch deep in the
ground for $\frac{1}{16}$ cor. From which
a Balon 20 ins diam bears $N 70^{\circ} E 203$ the dist
a Balon 20 ins diam bears $S 65^{\circ} E 12$ the dist
- 81 22 1/2 mile Witness corner for seas 8-9-16 & 17 130 lbs north
of true corner (in the sea) on North Bank of Unatilla
River, between Rail head and pier.
I drove Iron pipe 32 inch by $\frac{1}{4}$ inch 30 inches in the
ground for Witness cor to seas 8-9-16 & 17
and drove Iron rods NB-DG-DW and NW from
Corner 20 inch in the ground 4 feet dist from cor.
South through Center sea 8
- 16 25 Unatilla river 376 lbs wide Course NB
- 20 01 to East Bank of river
- 35 45 Unatilla river 501 lbs wide mas NW
- 40 46 to West Bank of river set long witness cor for cor 20 00
- 50 10 the 1/2 mile Point bet seas 8 & 17
From the $\frac{1}{4}$ mile cor bet seas 7 & 8 1 run
East through Center sea 8
- 20 00 set Irons $\frac{1}{16}$ cor
- 39 49 Unatilla river 496 across mas NW at top intersection
- 144 45 to East Bank
- 60 00 set Irons $\frac{1}{16}$ cor
- 81 37 a point 50 lbs north of the 1/2 mile cor bet seas 8 & 9
I drove $\frac{1}{16}$ cor in center of the sea 102 lbs 41 lbs 3
and set Stone 18x6x3 inches on on E side of

Build Good Guide marked 416 on 6 feet

1 make witness corner on West bank of river 78 ft West of true corner and drive on Iron bar 1 x 1/2 inches x 22 inches 20 inches in the ground from which

a balise 12 ins diam bears S 67° W 191 lbs dist

a balise 20 ins diam bears S 34 1/2° E 328 lbs dist

also make witness corner on N & S line 60 ft South of true center cor. drive Iron rod 38 ins long 30 ins in the ground for witness cor from which

a balise 20 ins diam bears S 26 1/2° E 242 lbs dist

a balise 12 ins diam bears S 85° W 275 lbs dist

Witness lines marked C & B, J.

These West through cuts W 1/2 Sec 8 on true line

20 34 1/2 Iron drive Iron rod 24 ins long 23 ins in the ground for 416 cor in center of W 1/2 Sec 8 on East side of road N & W North through center S 6 1/4 Sec 8

20 00 1st find 416 cor

40 08 the 416 cor in cuts S 1/2 Sec 8

These South on true line

20 04 1st stone 14 x 10 x 6 16 ins in the ground in corner of stone for 416 cor in cuts S 6 1/4 Sec 8

John W. Kimball County Surveyor