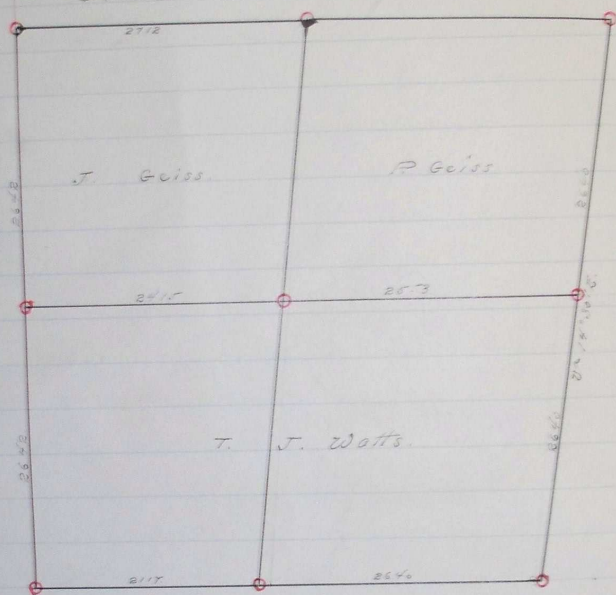


Course	Degrees	Minutes	Chains	Links

Survey made at Request of Peter Geiss  
and John Geiss. on Feb. 11, 18, and 15th 1901.  
Sec 30 T. 4. R. 35 E. W. 1/2  
Geo Garriochall } Survey Chainmen  
Peter Geiss }  
C. Geiss }  
Flagman.



After qualifying all assistants I began at  
the N.W. Corner of Sec 30, which is a Tenth Line  
in center of road running E-W.

Thence West on random line.

26 41

Fence and end of road.

58 25

Set stake on west side of Pine Creek.

Thence North on random line between  
Sections 29 and 30.

54 48

Intersect N line of Sec 30 334 feet west of  
corner. to Sec 30, 19820. Back corner being

Feet Meters Chains Links

marked by original gov't stake on mound of stones  
 as this survey is made to establish the  
 corners of Sec 30. T<sub>1</sub>S. N. R. 35 E. and as the  
 first corner to be established is the S.E. corner of  
 said Sec 30. which is given in notes of original  
 survey as being situated 1 Chain East of Pine  
 Creek and as notes also give each line of  
 Sec 30 as 80 Chains in length and as  
 such distance south from a point N.E. Cor  
 of Sec 30. reaches a point on the east side  
 of Pine Creek, where said stream is  
 flowing north, as called for in gov't notes  
 describing position of S.E. corner of  
 Sec 30, at which point, 80 Chains South  
 from N.E. Corner of Sec 30, and 1 Chain  
 East from Pine Creek, I plant basalt  
 stone 84x10x12 20 inches in ground for  
 corner to Secs 29, 30, 31 & 32. Thence North  
 on true line  $\frac{1}{2}$  1<sup>st</sup> 30' S.

26 40 I plant stone 30x10x4. on hillside on  
 east side of Pine creek in the corner  
 between Sections 29 & 30. T<sub>1</sub>S. N. R. 35 E.  
 Thence west through center of Section  
 30.  $\frac{1}{2}$  21' 0" S.

49 68. Intersect west line of Section, at  $\frac{1}{4}$  Section  
 I then proceed to the N.W. corner of sec 30  
 which is marked by a basalt stone and  
 run south on range line between ranges  
 34 and 35 E. S.

52 84 Intersect S line of S.W. <sup>Sec 30</sup> corner, where  
 by excavating I find remains of a stone

Course.

Degrees. Minutes.

~~72° 45' 12" S~~

- and black Basalt Stone,  $18 \times 10 \times 6$ , under which I placed a bunch of barbed wire. Thence north on true line.
- 2642 I planted a Basalt Stone  $18 \times 15 \times 9$  for the corner between Sections 29 & 30. The <sup>measured</sup> west & east center line which I had previously run intersected west line of section. 9.6 feet north of this corner. I now repair to the top on the S.W. cor of Sec 30. Thence East on true line
- 2117 I set Basalt Stone for  $\frac{1}{4}$  cor on South line of Sec 30
- 4757 Intersect 74 S line at S.E. cor of Sec 30. I return to the  $\frac{1}{4}$  cor on South line of Sec 30, and run north  $21^\circ 5'$  through the center of Sec 30.
- 5250 Intersect 71. line of section  $59^\circ W$  of  $\frac{1}{4}$  cor on line between Sec 19 and 30. Returning to center of Sec 30 after making proper corrections I set Basalt Stone  $18 \times 8 \times 10$  for center of Sec 30. To H N Kayser  
 L. E. Macomber  
 County Surveyor.