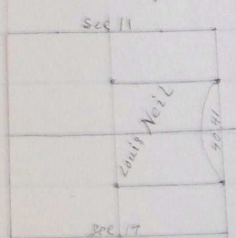


Page Minutes Chases Links

- 30 75 creek runs west
- 40 00 at bridge into Note
- 57 00 Intersect 296 the west of the 4 sec line between
from the 1/4 sec cor on East by place
in west on random line length 100
- 57 05 Intersect 120 the south of the sec corner var 22° to
Place 2890 8' E on true line
- 59 00 at Stone for 116 corner in center sec as
John W. Kimball County Surveyor
witnessed by E. A. One Party and Hill-Pomeroy
and J. W. Cook as Flagman

Surveyed for Louis Neil June 22 1897



T 2, N. R. 31. E. W. M. I commenced at the 1/4 sec cor bet the 11 & 17
thence east on random line bet Dec 11 & 14
var 21° to 175 unattached wire base SW
3082 unattached wire NW
3505 the 1/4 sec cor bet Dec 11 & 17

- 39 41 Point for corner to Sec 11-12-13 & 14 in unattached wire
I then commenced at 1/4 sec cor bet Sec 18 & 2 this long to nearest corner on north bank
thence south 3970 Original Cor. to Sec 1-2-11 & 12 Stone in mid of Stone
thence south bet Sec 11 & 12 var same 21° E
- 50 00 corner point in river
thence south bet Sec 13 & 14
- 20 00 bet bridge for 116 corner
- 81 64 Intersect cor to Sec 13-14-23 & 24 original corner
North on same line
- 60 61 bet post in mid of Stone for 116 corner
- 80 00 corner point on river bet post on north bank for witness E.
- 101 02 at Stone in mid of Stone for 116 corner
for W. Kimball County Surveyor