

PLAT AND RECORD OF SURVEY No. 21

Course	Degrees	Minutes	Chains	Links	Description
S. E.	77	08	71	52	Int. N. & S. line, at cor, which is Gov. post in stone mds. as described in original notes. I run, thence, on random line bet. Secs. 17 & 18.
North			40	00	Set temp. $\frac{1}{4}$ S. cor. var. 21°
			90	27	A point 82 links west of Sec. cor. To further test S. E. cor. Sec. 18, I run, from this cor., on random line, bet. Secs. 19 & 20, var. 21°
South			30	00	Set temp. $\frac{1}{4}$ S. cor. Find no indications of original corner.
			40	00	" " " " do.
			45	25	Bottom of Ravine.
			72	00	do
			84	66	A point 50 links East of Gov. Sec. cor. which I find as described in original notes, witness trees & stake plainly marked. I, therefore, run from S. E. cor. Sec. 18, on true S. bdy.
N. W.	77	08	37	25	Set a basalt stone, 18x14x6 ins., marked $\frac{1}{4}$ on N. face, on gentle N. slope, in Tho. Gee's field.
			55	87	Set a basalt stone, 13x7x3 ins, on steep N. hill side, South of Cañon, course W.
			71	52	To S. W. cor. Sec. 18.

Corrections, made use of above.

$$\frac{\text{Returned}}{8 \text{ chds}} 76.81 : 71.52 :: 40 : X, \text{ or } 37.25; \text{ and } 76.81 : 71.52 :: 60 : X \text{ or } 55.87 \text{ chs.}$$

I run right lines, from $\frac{1}{4}$ S. cor. on S. to $\frac{1}{4}$ S. cor. on N. bdy. 18 = 85.09
 and from $\frac{1}{4}$ S. cor. on E. to $\frac{1}{4}$ S. cor. on W. bdy. Sec 18 = 73.24 chs.,
 and find the point of intersection to be 38.35 chs. W. of $\frac{1}{4}$ S. cor. on
 E. bdy., and 42.52 chs. N. of $\frac{1}{4}$ S. cor. on S. bdy. of Sec. 18.
 For $\frac{1}{4}$ S. cor. on E. bdy. Sec. 18, I more temp. cor. North 57 $3\frac{1}{2}$ links
 and set on true line bet. Sec. Cors. N. & S. of it, a basalt stone
 11x7x5 ins, marked $\frac{1}{4}$ on E. side, on hill side facing West, in
 W. H. Hatcher's field. To set to S. cor. on W. $\frac{1}{2}$ of E. & W. center,

$$\frac{\text{Returned}}{8 \text{ chds}} 36.795 : 20 :: 34.89 : 18.97 \text{ chs.}$$

I set a basalt stone 17x13x5 ins, marked C S 18 on N. face, on
 gentle N. slope, at true intersection of cross lines, as above, in
 Mr. Ridenour's field. I measure, on true E. & W. center Sec. 18, the

Course	Degrees	Minutes	Chains	Links	Description
West	18	97			Set a basalt stone, 17x7x7 ins., marked + on N. face, on gentle W. slope, in Mr. Kidson's fields. I measure, on true N. & S. center line, from center Sec. 18
North	21	26			Set a basalt stone, 11x6x10 ins., marked x on N. face, on hill side facing East. I measure from center Sec. 18, on true N. & S. center line,
South	21	26			Set a basalt stone 12x8x2., marked + on top, near summit of ridge East of L. M. Kilgore's Res.
	42	52			To 1/4 Sec. on S. bndy. Sec. 18. I run right lines, bet the corners on the N., E., S., & W. sides of the S. W. 1/4 of Sec. 18, and find true point of intersec of the same to be under the west end of the porch on the N. side of L. M. Kilgore's house; at which point, I set a basalt stone 13x11x9 ins., marked + on the upper end, for center of S. W. 1/4 Sec. 18. From this cor., Mr. Kilgore's well bears N. W. 25 links.

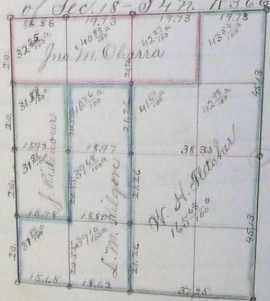
I run right lines, bet the corners on the N., E., S., & W. sides of the S. W. 1/4 of Sec. 18, and find true point of intersec of the same to be under the west end of the porch on the N. side of L. M. Kilgore's house; at which point, I set a basalt stone 13x11x9 ins., marked + on the upper end, for center of S. W. 1/4 Sec. 18.

From this cor., Mr. Kilgore's well bears N. W. 25 links.
Jno. C. Arnold, Dpty. Co. Survr.

Explanations:-

Plat of Secs 18-24 22 N 36 E 27.7m.

- o indicates stone corner.
- Scale 2 ins. = 80 chs.
- Comes, as for all maps
- The lengths of lines, as marked, indicates measured lengths of same.



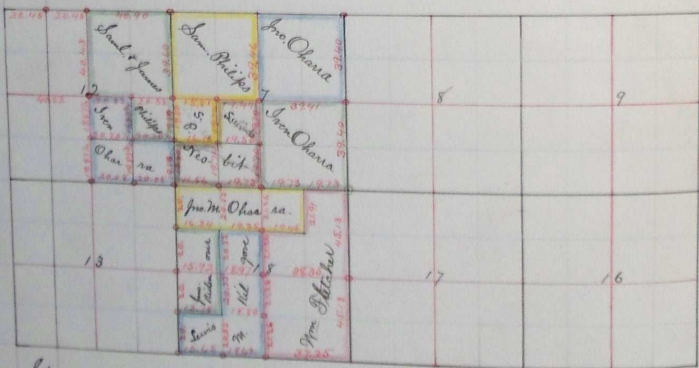
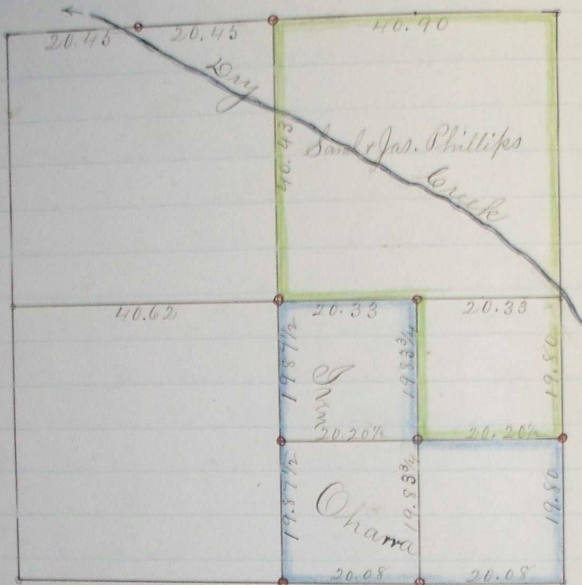
(See map p. 128)

Survey commenced Dec. 3^d and Completed Dec. 9th 1885.

W. J. Chalk, Co. Surveyor.
Per Jno. C. Arnold, Dpty.

Course, Degree, Minutes, Chains, Links.

Section 12, T. 4 N., R. 35 E.



Stone corners marked.

W. S. Chalk, Co. Surv. Yumatilla Co. Cal.
Per. Geo. C. Arnold, Dpty.