

PLAT AND RECORD OF SURVEY No. 7779

Cours.	Degrees	Minutes	Chains	Links
--------	---------	---------	--------	-------

Subdivision of Sec. 4 T. 4 N. R. 33 E. for S. C. Calvert

June 23^d 1885. Assisted by W. B. Henderson and Stephen James
 sworn chmr., and Henry Williams, sworn flagman, I commenced at
 1/4 Sec. cor. bet. secs. 3 & 4 S. 4 N. R. 33 E. and run thence, on random line
 through center sec. 4 va. 21° 36'

S W 83 00 75 30

Int. N. & S. line 90 links N. of 1/4 S. cor. bet. Secs 4 & 5. Run thence
 on true line bet. Secs. 4 & 5. va. 21° E

North

31 40

Closing cor. for Secs. 3 & 4 in S.W. cor. stake in mound with pits.
 Run thence, on random Pt. Stand. Parallel

East

6 84

Find no indications of Gov. corner

40 00

Set temp 1/4 S. cor.

46 14

Gov. Stand 1/4 S. post in ground & Find no charcoal nor pits.

79 28

A point 75 links South of closing cor. for Secs 3 & 4 as set by John
 Swarr. A. I. Coffey

80 00

Set temp closing cor. for Secs. 3 & 4

126 45

Int. N. & S. line 34 links South of Stand 1/4 S. cor. = Charred end of
 post in mound with pits

From 1/4 S. cor. bet. Secs. 4 & 9, verified by S. C. Calvert, R. H. Proster
 and Thos. Coplinger, I find part of original 1/4 S. post in ground.
 and set a basalt stone 19x10x4 ins. marked 1/4 on North face, in
 line E. & W, fences run N. & S. from points on opposite sides of line.
 Run thence on random through center Sec. 4. va. 20° E

North

40 00

Set temp center sec. 4

71 18

Int. E & W. line 20 links west of temp 1/4 S. cor. on N. bndy. sec. 4

To set True 1/4 S. Cor. on N. bndy. Sec. 4

Return Dist. $\frac{\text{Return Dist.}}{\text{N. bndy. Sec. 4}} :: \frac{\text{measured}}{\text{N. bndy. Sec. 4}}$
 $126.84 : 80.04 :: 126.45 : X$ or $77.77 + 79.79 \div 2 = 37.89 \frac{1}{2}$ Then

$40 - 37.89 \frac{1}{2} = 10 \frac{1}{2}$; And $126.45 : 34 :: 37.89 \frac{1}{2} : X$ or $107 = 11$. I move
 temp 1/4 S. cor. on N. bndy. sec. 4. ten and 1/2 links west and close
 links north, and set a basalt stone 15x6x6 ins. marked 1/4 on
 south face; land slopes to W

These conditions make the N. & S. random center = $71.18 + 11 = 72.29$
 and the Dep. = $.20 - 10 \frac{1}{2} = 9 \frac{1}{2}$ links west.

$\therefore 72.29 : 9 \frac{1}{2} \text{ links} :: 40 : X$ or $56.3 +$; I move temp. center S. 4. 56

PLAT AND RECORD OF SURVEY No. 111

Course Degree Minutes Chains Links

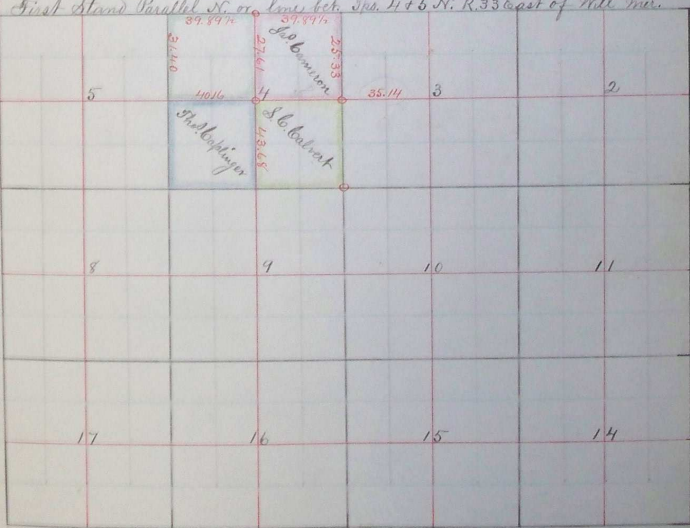
N. & S. random center, 5 1/2 links east, to point on true N. & S. center-line. Correcting the random E. & W. center line in a similar manner, I find intersection of true cross-line to be 43.68 chs. N. of 1/4 S. cor. on S. bndy, and 35.14 chs. from 1/4 S. cor. on E. bndy Sec. 4.

Notes: 1. The 1/4 S. cor. bet Secs. 3 & 4, taken as initial pt. was set by J. H. Raley, while Co. Surveyor, and who found charred ends of post in mounds and pits. I found here the same evidences, and therefore set a basalt stone 14 x 7 x 7 ins. marked 1/4 on E. face: this cor. is on N. W. hill side & S. of ravine course N. E.

2. To perpetuate S. E. cor. Sec. 4 as verified by his certified notes of J. H. Raley, while surveyor, and marked by 3 small stones in mounds, I set a basalt stone 12 x 5 x 5 ins., marked 5 notches on S. corner and 2 notches on E. corner in center of traveled road in land E. & W. on land sloping E.

First Stand Parallel N. or line bet. Secs. 4 & 5 N. R. 33 East of Mill me.

Chain corner marked



W. J. Chalks, Co. Surveyor
Per. Jno. C. Arnold, Deputy