

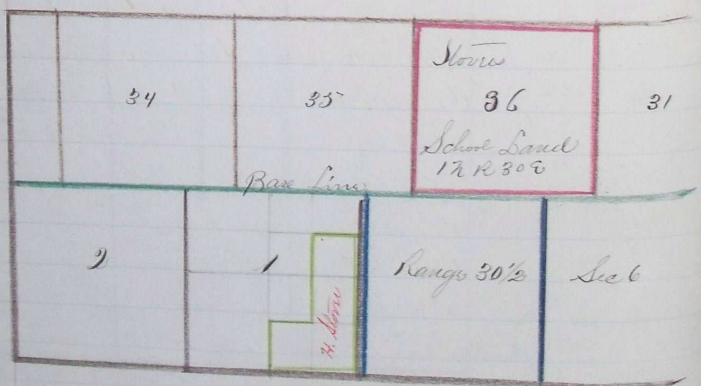
PLAT AND RECORD OF SURVEY No. 7

W. W. Stone

April 17 1886

Course. Degrees. Minutes. Chains. Links.

- Found Corner on Base line well defined said corner being designated as the N.E. Corner of Sec 6 T1S R31E East,
- From said Corner I run on Base line
- West 21 30 37 50 Found standard corner for sec 31 + 36 North of Base line -
- West . . . 40 0 0 Found NW Cor of Sec 6 T1S R31E will define from which I run
- West . . . 92 10 Cross Range 30 1/2 measured thence
- South . . . 110 0 0 Found 1/4 Post on the E. Side of Sec 1 T1S R31E
- South . . . 80 0 0 Found SW Cor will define at S.E. Cor of Sec 1 hence I find that W. Stone's land is SE 1/4 of NE 1/4 + S 1/2 of SE 1/4 + NE 1/4 of SE 1/4 of Sec 1 T1S R30E is shown in the following plat



I hereby certify that the above notes & plat are correct as by me determined
 J. W. Raley
 C. Surveyor