

# OREGON CORNER RESTORATION FORM

COUNTY: Umatilla. DATE: 04/09/08

CORNER DESIGNATION: X-9, The East One-Quarter Corner of Section 32, Township 6 North, Range 36 East, W.M.

PREVIOUS RENEWALS/SURVEYS ETC.: Corner originally established by Odell & Lewis under GLO Contract No. 110, dated February 7, 1865. Notes state: Set 1/4 Sec. post; dug pits & raised mound; drove charred stake; as per instructions.

John Kimbrell, under survey recorded in Book 1, Page 393, shows certain measurements made to and from this corner by Peter Zahner. The corner appears to have been reestablished by Peter Zahner, but there is no indication of what was set.

MONUMENT AND ACCESSORIES FOUND: None. Falls in farmed field with no nearby features.

## MONUMENT MARKING DETAIL:

T6N R36E  
1/4  
S32|S33  
2008  
PLS 1106

MONUMENT SET: Corner point was reestablished by single proportionate measure between the Northeast and Southeast corners of Section 32. At the reestablished corner point, set a 2 3/8" brass monument on a 1 1/4" x 30" galvanized iron pipe with cap buried 15" below ground level, cap marked as shown in "Monument Marking Detail".

### New accessories:

A silver deep-1 magnet bears North 25° East, 26.8 feet.

A purple deep-1 magnet bears South 57 1/2° East, 27.5 feet.

A 5/8" x 24" rebar with a red plastic cap marked "OR PLS 1106, WA PLS 17372", bears South 32° West, 46.8 feet.

A 5/8" x 24" rebar with a red plastic cap marked "OR PLS 1106, WA PLS 17372", bears North 52° West, 52.6 feet.

Attached bearing object signs attached to rebar accessories and buried bearing object signs with the deep-1 magnets. Magnets are buried 24" below ground level.

LOCATION AND COMMENTS: Corner falls 25 feet East of a dry gulch in edge of wheat field.

OREGON STATE PLANE COORDINATE, North Zone, NAD 83(91), International Feet:

N = 841667.03

E = 8754052.69

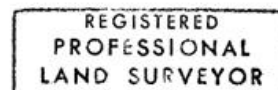
FIRM: Wells Surveying  
P.O. Box 1696  
Pendleton, OR 97801

COMPASS DECLINATION: 18° East

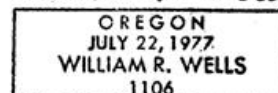
Surveyor's Seal

Witnesses: Jason Wells, LSIT

\6N36X9



*William R. Wells*



*Expires 6-30-10*

*09-10-C*