

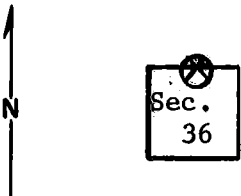
Index  
File No. V-23  
T 5 S. R. R. 30 E.  
Merid. Willamette

**CORNER RECORD (SEARCH)**

(Ref. FSM 7151.4)

Tract or Survey No. \_\_\_\_\_  
County Umatilla  
State Oregon  
Cor. No. \_\_\_\_\_

**CORNER DIAGRAM**



**DESCRIBE CORNER MONUMENT FOUND**

None  
Several stones in area. Nothing reliable.

**DESCRIBE BEARING TREES OR OTHER OFFICIAL ACCESSORIES FOUND**

A 28" p.p. with visible scribing which faces approx. N. 50°E.  
A 20" p.p. with what appears to be scribing, which faces S. 40°W.  
(approx.)

The intersection of these 2 bearings fits original GLO distances; however, the bearings from approx. corner to the B.T.'s is in reverse of original GLO Notes.

**PHOTO IDENTIFICATION DATA**

Photo No. \_\_\_\_\_  
Filed At. \_\_\_\_\_  
Object Ident. \_\_\_\_\_  
Ident. By \_\_\_\_\_  
*Signature*

**DESCRIBE CORNER LOCATION RELATIVE TO NEAR-BY FEATURES, ALSO HOW TO REACH CORNER**

**PLANE COORDINATE POSITION DATA**

State \_\_\_\_\_ Zone \_\_\_\_\_  
X \_\_\_\_\_  
Y \_\_\_\_\_  
Estab. By \_\_\_\_\_  
*Agency*

Signature T, Hollamon Title Eng, Tech, Division \_\_\_\_\_ Headquarters S, O. Date 4/26/74 7100-52-(3/68)

CORNER RECORD (PERPETUATION)

MONUMENT: DESCRIBE NEW MONUMENT SET, OR WORK DONE TO PRESERVE EXISTING MONUMENT

ACCESSORIES : DESCRIBE NEW BT'S WITNESS OBJECTS ETC. ESTABLISHED, OR WORK DONE TO PRESERVE EXISTING EVIDENCE

I placed blank B.T. tag on each of the B.T.'s  
I also placed a location poster on a 20" second growth p.pine at south edge  
of Sugarbowl Ridge Road approx. 2,200 ft. south of  $\frac{1}{4}$  corner.

Work Done By. \_\_\_\_\_ Title \_\_\_\_\_ Date \_\_\_\_\_ State Registration No.  
or Agency \_\_\_\_\_  
Certified Cor. Record Prepared ? Yes No Filed At: \_\_\_\_\_ Date \_\_\_\_\_

REMARKS

Index File No. T. R. M. Tract or Surv. No. Cor.