

Index  
File No. E-21

**CORNER RECORD (SEARCH)**

(Ref. FSM 7151.4)

Tract or  
Survey No. \_\_\_\_\_ Cor.  
No. \_\_\_\_\_

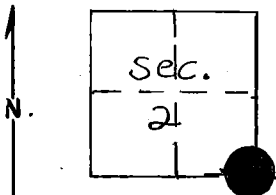
T 4 S. R. 31 E.

R.D. Ukiah County Umatilla

Merid. Willamette

N.F. Umatilla State Oregon

**CORNER DIAGRAM**



**DESCRIBE CORNER MONUMENT FOUND**

Material: Stone Mound Size: 3' X 3' X 8" Mound

Markings: None visible. 2"X2" Native Stake lying on mound.

*Monumented By BLM, 1978*

**DESCRIBE BEARING TREES OR OTHER OFFICIAL ACCESSORIES FOUND**

A 36" ponderosa pine stump bears N. 21° W, approximately 65'. Scribing barely visible. Old GLO BT tag dated ~~7/70~~ 7/67 on it. A 24" ponderosa pine bears N. 38° E. Approximatley 80'. Closed blaze on SW face. It also has a GLO BT tag on it dated 7/67.

**PHOTO IDENTIFICATION DATA**

Photo No. \_\_\_\_\_  
Filed At. \_\_\_\_\_  
Object Ident. \_\_\_\_\_  
Ident. By \_\_\_\_\_  
*Signature*

**DESCRIBE CORNER LOCATION RELATIVE TO NEAR-BY FEATURES, ALSO HOW TO REACH CORNER**

Mound is in a North-Sourth fence 50' East of primitive road.

**PLANE COORDINATE POSITION DATA**

State \_\_\_\_\_ Zone \_\_\_\_\_  
X \_\_\_\_\_  
Y \_\_\_\_\_  
Estob. By \_\_\_\_\_  
*Agency*

Signature  
*W. Moore*

Title  
Engr. Tech.

Division

Headquarters

Date  
4/76

7100-52-(3/68)

CORNER RECORD (PERPETUATION)

MONUMENT : DESCRIBE NEW MONUMENT SET, OR WORK DONE TO PRESERVE EXISTING MONUMENT

9

ACCESSORIES : DESCRIBE NEW BT'S WITNESS OBJECTS ETC. ESTABLISHED, OR WORK DONE TO PRESERVE EXISTING EVIDENCE

10

Work Done By \_\_\_\_\_ Title \_\_\_\_\_ Date \_\_\_\_\_ State Registration No. or Agency \_\_\_\_\_

Certified Cor. Record Prepared ? Yes No Filed At \_\_\_\_\_ Date \_\_\_\_\_

REMARKS

12

Index File No. T. R. M. Tract or Surv. No. Cor. 13