

OREGON CORNER RESTORATION FORM

Section 1 Township 4S Range 31E

County Umatilla Date 11-24-87

4-23

CORNER DESIGNATION

N $\frac{1}{2}$ Section 1

- Condition Report Only
- Not Found
- Renewed
- Unrecorded
- Surveyed In
- Referenced Out

Previous Renewals/Surveys, etc. None since original survey by Geo. S. Pershin, under Contract No. 373, dated September, 1880.

Monument(s) & Accessories Found: (Condition and Source)

A 24" sawn ponderosa pine stump with scribes "BT" visible on lower blaze, bears S40°E 40.3' from reestablished corner point.

The original corner stone was gone. The sawn ponderosa pine stump is an original bearing tree. The corner point was re-established by reversing record bearing and distance of S40°E-61 lks.

Monument Detail

Cap marked:

T3S R31E

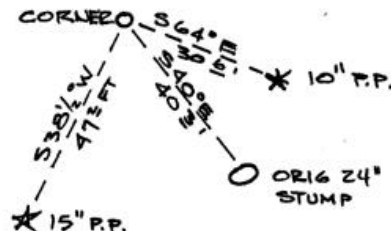
$\frac{1}{2}$ S1

T4S R31E

1987

PLS 1106

Sketch



Monument Set (Procedures and Description)

Set 1 $\frac{1}{2}$ " by 30" flanged g.i.p. with 2 $\frac{1}{2}$ " brass cap, marked as shown, 24" in the ground and surrounded with a mound of earth.

Set steel fence post west of corner and attached witness sign to post.

New Accessories

A 10" ponderosa pine bears S64°E-30.6' scribed $\frac{1}{2}$ S1 BT.

A 15" ponderosa pine bears S38 $\frac{1}{2}$ °W-47.2' scribed $\frac{1}{2}$ S1 BT.

Attached bearing object signs to original and new bearing trees with aluminum nails.

Location & Comments

Photo Attached.

Compass Declination 19°

Firm/Agency Bill Wells, Surveyor

Surveyor's Seal

RECEIVED BY

Umatilla County Surveyor

Date 12-87

Rec'd By [Signature]

No. 87-70-B

Address P.O. Box 1696

Pendleton, Oregon

Party Chief Bill Wells

Notes

Witness Staebler/Gannon

REGISTERED
PROFESSIONAL
LAND SURVEYOR

William R. Wells

OREGON
JULY 22, 1977
WILLIAM R. WELLS
1106