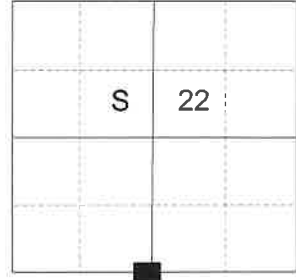


CERTIFIED RECORD OF LAND CORNER MONUMENTATION

HISTORY OF ORIGINAL CORNER ESTABLISHED:

Originally established by George S Pershin under GLO Contract No. 332, dated July 29, 1879. Surveyor General record states:
 Set Fir post on Northwest slope for corner for 1/4 Sec. Cor. from which:
 A fir, 10 ins. dia. bears N50°E, 45 lks. dist.
 A fir, 6 ins. dia. bears S28°W, 35 lks. dist.

T 4 N R 37 E R-15



In 1977, James Hambleton, in Survey Number N-65 indicates that he found the original GLO corner but makes no reference to perpetuation.

In Survey Number 93-64-C, William Wells finds a wagon axle skein in a mound of stone, from which a rotten stump with axe marks and scribing bears S30°W, 23.4 ft. Monumentation record states: Set a 1 1/2" 30" iron pipe with a 2" brass cap, 25 inches in the ground, from which:
 A 10 inch fir bears S85°W, 10.0'
 A 14 inch fir bears N18°W, 24.1'
 A 7 inch fir bears S88°E, 13.6'
 A 8 inch fir bears S14°E, 22.2'.

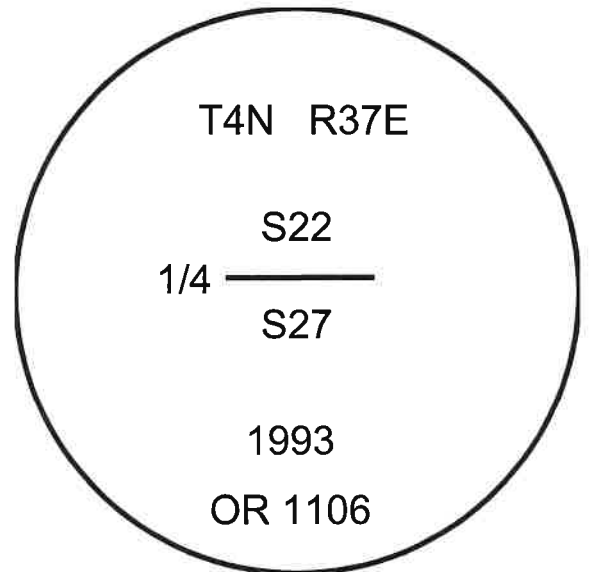
Corner recovered in Survey Number 13-533-B. Umatilla County Monumentation Record states:
 Found a 2 1/2" brass cap on a 1 1/2" iron pipe, 3" above ground, marked as shown below, from which:
 A stump bears East, a distance of 13.6 feet, scribe marks visible.
 An 8 inch White Fir bears South 9° East, a distance of 22.2 feet. alive and vigorous with healed blaze.
 A 13 inch White Fir bears South 80° West, a distance of 10.3 feet, alive and vigorous with healed blaze.
 A 19 inch White Fir bears North 18° West, a distance of 24.1 feet, alive and vigorous with scribe marks visible on a partially healed blaze.
 New Bearing Tree:
 A 12 inch White Fir bears North 23° East, a distance of 22.60 feet, marked 1/4 S22 BT.

DESCRIPTION OF CORNER EVIDENCE FOUND:

Found a 1" galvanized iron pipe, 2 inches above ground, with 2 1/2" brass cap marked as shown below and in a 3 ft. diam. collar of stone, from which:
 A 12" White Fir bears North 23° East, a dist. of 22.60 ft., dead and standing 6 ft. tall with 1/4 S22 scribe visible on partially healed blaze.
 An 11" stump, bears South 9° East, a dist. of 22.20 ft., 1 ft. tall with S27 BT scribe visible on partially healed blaze.
 A 13" White Fir bears South 80° West, a dist. of 10.30 ft., dead and standing 5 ft. tall with upper and lower healed blazes.
 A 19" White Fir bears North 18° West, a dist. of 24.10 ft., dead and standing 5 ft. tall with lower scribe visible on partially healed blaze and no scribe visible on upper healed blaze.
 Steel fencepost bears approx. 0.5 ft. West.

DESCRIPTION OF MONUMENT AND ACCESSORIES I ESTABLISHED TO PERPETUATE THE ORIGINAL LOCATION OF THIS CORNER:

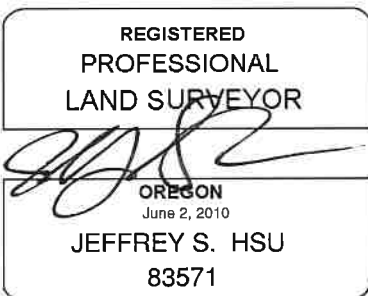
From the iron pipe monument:
NEW BEARING OBJECT:
 A 5/8" x 30" iron pin bears North 47°50' East, a dist. of 15.25 ft. with 1 1/2" aluminum cap marked BGB SURVEY MARKER NERP.
 A 5/8" x 30" iron pin bears South 28°47' East, a dist. of 14.00 ft. with 1 1/2" aluminum cap marked BGB SURVEY MARKER SERP.
 A 9" White Fir bears South 51° West, a dist. of 24.85 ft., scribed 1/4 S27 BT.
 A 4" Tamarack bears North 17° West, a distance of 4.80 feet scribed 1/4 S22 BT.



I hereby certify that the monument was perpetuated on July 27, 2022.

Witnesses: Kyle A. Tucker and Dan S. Drum

I used a Leica GS18 with RTK in the establishment of the new iron pin accessories. Basis of Bearing is as per Survey for Manulife dated August 2022. Bearings and distances of the bearing objects are to the center of the aluminum caps. I used a steel tape and magnetic compass in the establishment of the new bearing trees. I used 14° East declination, the distances are to a 60d spike driven into the right side of the root crown of the bearing trees. A brass washer marked OPLS 83571 is attached to the BT blaze of the new bearing trees.



R-15

Renewal Date: June 30, 2023

22-091-8