

**OREGON CORNER RESTORATION FORM**

COUNTY: Umatilla DATE: 10/30/03

CORNER DESIGNATION: N-3, The North 1/4 Corner of Section 19, T4N, R37E, W.M..

PREVIOUS RENEWALS/SURVEYS ETC.: Corner originally established by Wm. Odell, under Contract No. 114, dated July 2, 1866. Notes state: Set post Cor. for 1/4 Sec. From which:  
A Pine, 24 ins. diam brs. N 02°E., 19 lks.  
A Pine, 18 ins. diam. brs. S15°W., 50 lks.

Corner was recovered by J.C. Arnold in Umatilla County Survey No. 32, in October, 1888. Survey No. 32 is recorded in Record of Private Surveys, Book 1, Page 181. Corner was also recovered and noted by J.C. Arnold in his survey of County Road No. 346, in August, 1890. In this road survey, Arnold reports a ravine 128 feet North of the Corner and a second ravine 442 feet South of the Corner.

**MONUMENT AND ACCESSORIES FOUND:**

None, corner is destroyed by road building and timber harvesting. From experience in retracing the original surveyor, Wm. Odell, I know he would not have "closed" his line between this Corner and the range line 1/2 mile East. He would have "stubbed" East from the Northeast Corner of Section 19 and set the Corner. This "stubbing" method is verified by the measurements to old fence remains and old farm lines along the North line of the Northwest Quarter of Section 19, and the length and bearing of the line. Therefore, single proportionate measurement between the recovered Northeast Corner and Northwest Corners of Section 19 is an unacceptable method for reestablishing this Corner. To reestablish the Corner point, I establish longitude by determining the "used" width for the County Road North of the Corner point. This "used" width averages 50 feet between the old fence line West of the County Road and the field and rock discard line on the East side of the road. I therefore determine longitude for the corner 25 feet East of fence on the West side of the County Road. To determine latitude, I locate the "ravines" called by J.C. Arnold in his 1890 road survey, North and South of the Corner point. I also locate and consider remains of old fence lines and old farm lines which exist along the North line of the Northwest Quarter of Section 19. I establish latitude for this corner at the mean latitudinal position at the between the two ravines and the intersection of old cultural feature line extended from the West. Reestablished corner position fits the ravine calls North and South and the cultural features along the North line of the Northwest Corner of Section 19.

**MONUMENT MARKING DETAIL:**

T4N R37E  
20 FT WC  
S18  
1/4 -----  
S19  
2003  
PLS 1106

REGISTERED  
PROFESSIONAL  
LAND SURVEYOR

*Walter R. Wells*  
OREGON  
JULY 22, 1977  
WILLIAM R. WELLS  
1106

*renews 6-30-04*

**MONUMENT SET:**

The County road is graded down to bedrock in the Corner area. Therefore, I established a witness corner for the Corner point. Witness Corner Monument bears South 87°28'26" W., 20.00 feet from the True Corner Point. At the Witness Corner Point, I set a 5/8" by 30" rebar with 2" aluminum cap. The aluminum cap is about 4" below ground line and marked as shown in "Monument Marking Detail".

**New Accessories:**

- A 3/4" brass washer, 1 foot above ground line in a corral fence corner bears N 03°W., 25.6'.
- A 3/4" brass washer, 1 foot above ground line in UECA Pole No. 185001, bears S 45°E., 52.3'.
- A 3/4" brass washer in a cattle loading ramp post S 14°E., 7.1'.
- A 5/8" by 30" rebar with yellow plastic cap marked "OR PLS 1106 WA PLS 17372", bears West., 28.0'.

Continued on Page 2 of 2.....

*03-317-B*

Brass washers are stamped "PLS 1106". Attached "bearing object" signs to all accessories. Set steel fence post 1 foot North of corner with "witness" sign attached.

LOCATION AND COMMENTS: Witness Corner is West of West edge of a North-South County Road, near corrals.

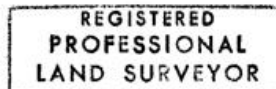
FIRM: William R. Wells, PLS  
P.O. Box 1696  
Pendleton, OR 97801

COMPASS DECLINATION: 18° East

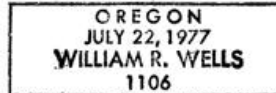
Surveyor's Seal

Witnesses: Jason Wells, LSIT  
Mark Hammersla

4N37N3



*William R. Wells*



*renews 6-30-04*

03-317-B